




Product datasheet

Anti-ASF1b antibody [6G7G4] ab233559

4 Images

Overview

Product name	Anti-ASF1b antibody [6G7G4]
Description	Mouse monoclonal [6G7G4] to ASF1b
Host species	Mouse
Tested applications	Suitable for: WB, Flow Cyt
Species reactivity	Reacts with: Human, African green monkey, Chinese hamster Predicted to work with: Mouse, Cow 
Immunogen	Recombinant full length protein corresponding to Human ASF1b aa 1-202. Expressed in E. coli. Sequence: MAKVSVLNVAVLENPSPFHSPFRFEISFECSEALADD LEWKIIVGSAES EEFDQILDSVLVGPVPAGRHMVFVQADAPNPSLIPET DAVGVTVVLITCT YHGQEFIRVGYVNNNEYLNPELRENPPMKPDFSQLQR NILASNPRVTRFH INWDNMDRLEAIETQDPSLGCGLPLNCTPIKGLGLPG CIPGLLPENSMD CI Database link: Q9NVP2 <div style="display: flex; justify-content: space-around;">  Run BLAST with  Run BLAST with </div>
Positive control	WB: Recombinant human ASF1b protein (amino acids 1-202). ASF1b (amino acids 1-202) - hlgGFc transfected HEK-293 cell lysate. HeLa, COS-7, HCT 116 and CHO3D10 cell lysate. Flow Cytometry: K562 cells.

Properties

Form	Liquid
Storage instructions	Shipped at 4°C. Store at +4°C short term (1-2 weeks). Upon delivery aliquot. Store at -20°C long term. Avoid freeze / thaw cycle.
Storage buffer	Preservative: 0.05% Sodium azide Constituent: PBS
Purity	Protein G purified
Purification notes	Purified from TCS.

Clonality	Monoclonal
Clone number	6G7G4
Isotype	IgG1

Applications

Our [Abpromise guarantee](#) covers the use of **ab233559** in the following tested applications.

The application notes include recommended starting dilutions; optimal dilutions/concentrations should be determined by the end user.

Application	Abreviews	Notes
WB		1/500 - 1/2000. Predicted molecular weight: 22.4 kDa.
Flow Cyt		1/200 - 1/400.

Target

Function

Histone chaperone that facilitates histone deposition and histone exchange and removal during nucleosome assembly and disassembly. Cooperates with chromatin assembly factor 1 (CAF-1) to promote replication-dependent chromatin assembly. Does not participate in replication-independent nucleosome deposition which is mediated by ASF1A and HIRA. Required for spermatogenesis.

Tissue specificity

Highly expressed in testis and at lower levels in colon, small intestine and thymus.

Sequence similarities

Belongs to the ASF1 family.

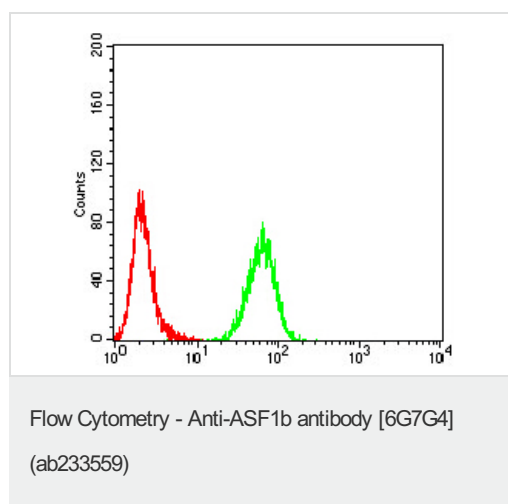
Post-translational modifications

Phosphorylated by TLK1 and TLK2.

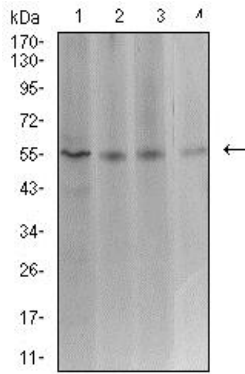
Cellular localization

Nucleus.

Images



Flow Cytometry analysis of K562 (Human chronic myelogenous leukemia cell line from bone marrow) cells, labeling ASF1b with ab233559 at a 1/200 dilution (green) compared to a negative control (red).



Western blot - Anti-ASF1b antibody [6G7G4] (ab233559)

All lanes : Anti-ASF1b antibody [6G7G4] (ab233559) at 1/500 dilution

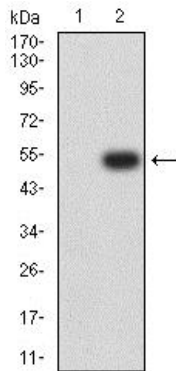
Lane 1 : HeLa (Human epithelial cell line from cervix adenocarcinoma) cell lysate

Lane 2 : COS-7 (African green monkey kidney fibroblast-like cell line) cell lysate

Lane 3 : HCT 116 (Human colorectal carcinoma cell line) cell lysate

Lane 4 : CHO3D10 cell lysate

Predicted band size: 22.4 kDa



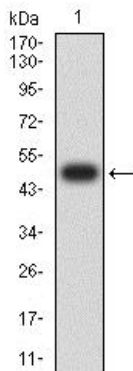
Western blot - Anti-ASF1b antibody [6G7G4] (ab233559)

All lanes : Anti-ASF1b antibody [6G7G4] (ab233559) at 1/500 dilution

Lane 1 : HEK-293 (Human epithelial cell line from embryonic kidney) cell lysate

Lane 2 : ASF1b (amino acids 1-202) - hlgGfc transfected HEK-293 (Human epithelial cell line from embryonic kidney) cell lysate

Predicted band size: 22.4 kDa



Western blot - Anti-ASF1b antibody [6G7G4] (ab233559)

Anti-ASF1b antibody [6G7G4] (ab233559) at 1/500 dilution + Recombinant human ASF1b protein (amino acids 1-202)

Predicted band size: 22.4 kDa

(Expected MW is 48.4 kDa)

Please note: All products are "FOR RESEARCH USE ONLY. NOT FOR USE IN DIAGNOSTIC PROCEDURES"

Our Abpromise to you: Quality guaranteed and expert technical support

- Replacement or refund for products not performing as stated on the datasheet
- Valid for 12 months from date of delivery
- Response to your inquiry within 24 hours

- We provide support in Chinese, English, French, German, Japanese and Spanish
- Extensive multi-media technical resources to help you
- We investigate all quality concerns to ensure our products perform to the highest standards

If the product does not perform as described on this datasheet, we will offer a refund or replacement. For full details of the Abpromise, please visit <https://www.abcam.com/abpromise> or contact our technical team.

Terms and conditions

- Guarantee only valid for products bought direct from Abcam or one of our authorized distributors