




## Product datasheet

# Anti-ASF1b antibody ab235358

[1 References](#) [3 Images](#)

### Overview

---

<b>Product name</b>	Anti-ASF1b antibody
<b>Description</b>	Rabbit polyclonal to ASF1b
<b>Host species</b>	Rabbit
<b>Tested applications</b>	<b>Suitable for:</b> WB, IHC-P
<b>Species reactivity</b>	<b>Reacts with:</b> Human <b>Predicted to work with:</b> Mouse, Cow 
<b>Immunogen</b>	Recombinant full length protein corresponding to Human ASF1b aa 1 to the C-terminus. Database link: <a href="#">Q9NVP2</a>  <a href="#">Run BLAST with</a>  <a href="#">Run BLAST with</a>
<b>Positive control</b>	WB: MCF7, Jurkat and HeLa whole cell lysates. IHC-P: Human testis and tonsil tissue.
<b>General notes</b>	<p>The Life Science industry has been in the grips of a reproducibility crisis for a number of years. Abcam is leading the way in addressing this with our range of recombinant monoclonal antibodies and knockout edited cell lines for gold-standard validation. Please check that this product meets your needs before purchasing.</p> <p>If you have any questions, special requirements or concerns, please send us an inquiry and/or contact our Support team ahead of purchase. Recommended alternatives for this product can be found below, along with publications, customer reviews and Q&amp;As</p>

### Properties

---

<b>Form</b>	Liquid
<b>Storage instructions</b>	Shipped at 4°C. Store at +4°C short term (1-2 weeks). Upon delivery aliquot. Store at -20°C long term. Avoid freeze / thaw cycle.
<b>Storage buffer</b>	pH: 7.40 Constituents: PBS, 50% Glycerol (glycerin, glycerine), 0.03% Proclin 300
<b>Purity</b>	Protein G purified
<b>Purification notes</b>	Purity >95%
<b>Clonality</b>	Polyclonal
<b>Isotype</b>	IgG

## Applications

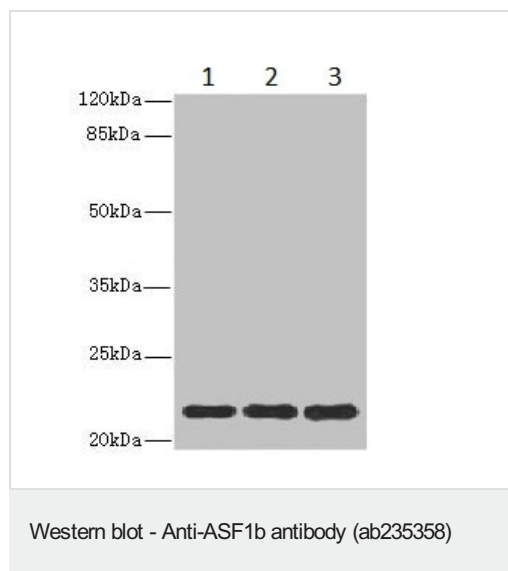
**The Abpromise guarantee** Our **Abpromise guarantee** covers the use of ab235358 in the following tested applications. The application notes include recommended starting dilutions; optimal dilutions/concentrations should be determined by the end user.

Application	Abreviews	Notes
WB		1/1000 - 1/5000. Predicted molecular weight: 22 kDa.
IHC-P		1/20 - 1/200.

## Target

<b>Function</b>	Histone chaperone that facilitates histone deposition and histone exchange and removal during nucleosome assembly and disassembly. Cooperates with chromatin assembly factor 1 (CAF-1) to promote replication-dependent chromatin assembly. Does not participate in replication-independent nucleosome deposition which is mediated by ASF1A and HIRA. Required for spermatogenesis.
<b>Tissue specificity</b>	Highly expressed in testis and at lower levels in colon, small intestine and thymus.
<b>Sequence similarities</b>	Belongs to the ASF1 family.
<b>Post-translational modifications</b>	Phosphorylated by TLK1 and TLK2.
<b>Cellular localization</b>	Nucleus.

## Images



**All lanes** : Anti-ASF1b antibody (ab235358) at 1/1000 dilution

**Lane 1** : MCF7 (human breast adenocarcinoma cell line) whole cell lysate

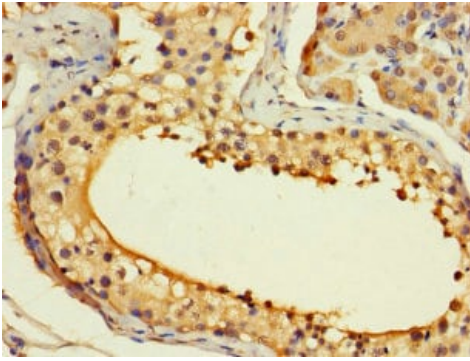
**Lane 2** : Jurkat (human T cell leukemia cell line from peripheral blood) whole cell lysate

**Lane 3** : HeLa (human epithelial cell line from cervix adenocarcinoma) whole cell lysate

### Secondary

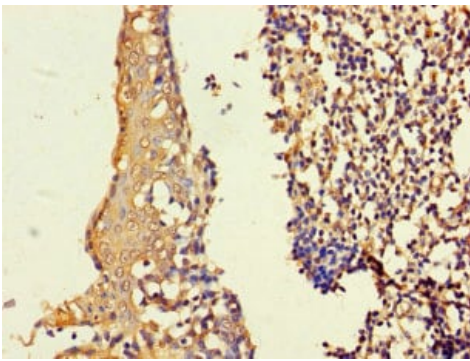
**All lanes** : Goat polyclonal to rabbit IgG at 1/10000 dilution

**Predicted band size:** 22 kDa



Paraffin-embedded human testis tissue stained for ASF1b using ab235358 at 1/100 dilution in immunohistochemical analysis.

Immunohistochemistry (Formalin/PFA-fixed paraffin-embedded sections) - Anti-ASF1b antibody (ab235358)



Paraffin-embedded human tonsil tissue stained for ASF1b using ab235358 at 1/100 dilution in immunohistochemical analysis.

Immunohistochemistry (Formalin/PFA-fixed paraffin-embedded sections) - Anti-ASF1b antibody (ab235358)

**Please note:** All products are "FOR RESEARCH USE ONLY. NOT FOR USE IN DIAGNOSTIC PROCEDURES"

### **Our Abpromise to you: Quality guaranteed and expert technical support**

---

- Replacement or refund for products not performing as stated on the datasheet
- Valid for 12 months from date of delivery
- Response to your inquiry within 24 hours
  
- We provide support in Chinese, English, French, German, Japanese and Spanish
- Extensive multi-media technical resources to help you
- We investigate all quality concerns to ensure our products perform to the highest standards

If the product does not perform as described on this datasheet, we will offer a refund or replacement. For full details of the Abpromise, please visit <https://www.abcam.com/abpromise> or contact our technical team.

## Terms and conditions

---

- Guarantee only valid for products bought direct from Abcam or one of our authorized distributors