


## Product datasheet

# Anti-ASH1L antibody [ASH5H03] $\alpha$ b50981

3 References 1 Image

### Overview

<b>Product name</b>	Anti-ASH1L antibody [ASH5H03]
<b>Description</b>	Mouse monoclonal [ASH5H03] to ASH1L
<b>Host species</b>	Mouse
<b>Tested applications</b>	<b>Suitable for:</b> Dot blot, WB
<b>Species reactivity</b>	<b>Reacts with:</b> Recombinant fragment <b>Predicted to work with:</b> Human 
<b>Immunogen</b>	Recombinant fragment corresponding to Human ASH1L aa 1611-1728. Sequence: IGSCRVSNPNSSGRKKLTDSPGLFSAQDTSLNRLHRKESL PSNERAVQTL AGSQPTSDKPSQRPSESTNCSPTRKRSSSESTSSTVNGV PSRSPRLVASG DDSVDSELLQRMVQNEDEQ  <a href="#">Run BLAST with</a> <a href="#">Run BLAST with</a>
<b>General notes</b>	Previously labelled as KMT2H / ASH1.  Reproducibility is key to advancing scientific discovery and accelerating scientists' next breakthrough.  Abcam is leading the way with our range of recombinant antibodies, knockout-validated antibodies and knockout cell lines, all of which support improved reproducibility.  We are also planning to innovate the way in which we present recommended applications and species on our product datasheets, so that only applications & species that have been tested in our own labs, our suppliers or by selected trusted collaborators are covered by our Abpromise™ guarantee.  In preparation for this, we have started to update the applications & species that this product is Abpromise guaranteed for.  We are also updating the applications & species that this product has been “predicted to work with,” however this information is not covered by our Abpromise guarantee.  Applications & species from publications and Abreviews that have not been tested in our own labs or in those of our suppliers are not covered by the Abpromise guarantee.  Please check that this product meets your needs before purchasing. If you have any questions, special requirements or concerns, please send us an inquiry and/or contact our Support team ahead of purchase. Recommended alternatives for this product can be found below, as well as customer reviews and Q&As.

## Properties

---

<b>Form</b>	Liquid
<b>Storage instructions</b>	Shipped at 4°C. Store at +4°C short term (1-2 weeks). Upon delivery aliquot. Store at -20°C long term.
<b>Storage buffer</b>	pH: 7.40 Preservative: 0.05% Sodium azide Constituents: 0.812% Sodium chloride, 0.1312% Sodium phosphate, 0.0225% Potassium chloride, 1% BSA, 0.03% Potassium phosphate, PBS
<b>Purity</b>	Protein G purified
<b>Purification notes</b>	ab50981 was purified using protein G column chromatography from culture supernatant of hybridoma cultured in a medium containing bovine IgG-depleted (approximately 95%) fetal bovine serum
<b>Clonality</b>	Monoclonal
<b>Clone number</b>	ASH5H03
<b>Isotype</b>	IgG1

## Applications

---

Our [Abpromise guarantee](#) covers the use of **ab50981** in the following tested applications.

The application notes include recommended starting dilutions; optimal dilutions/concentrations should be determined by the end user.

Application	Abreviews	Notes
-------------	-----------	-------

Dot blot

WB

<b>Application notes</b>	Dot: Use at an assay dependent dilution. WB: Use at an assay dependent dilution. Predicted molecular weight: 330 kDa.  This antibody has only been tested in WB against the recombinant fragment used as immunogen. We have no data on the detection of endogenous protein.  Not yet tested in other applications. Optimal dilutions/concentrations should be determined by the end user.
--------------------------	---

## Target

---

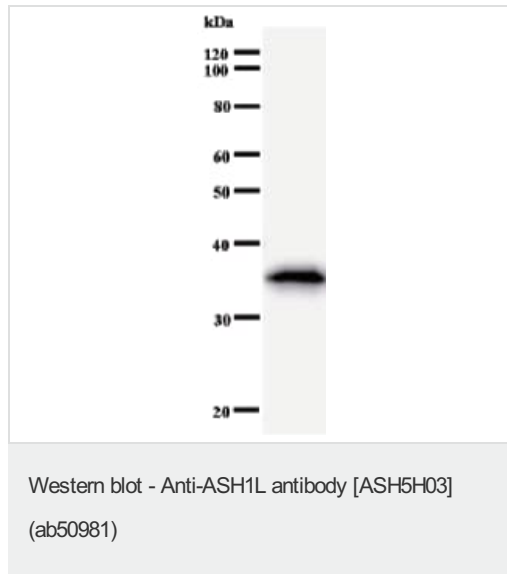
<b>Function</b>	Histone methyltransferase. Probably methylates 'Lys-4' of histone H3, a specific tag for epigenetic transcriptional activation.
<b>Tissue specificity</b>	Widely expressed, with highest level in brain, heart and kidney.
<b>Sequence similarities</b>	Belongs to the histone-lysine methyltransferase family. SET2 subfamily. Contains 3 A.T hook DNA-binding domains.

Contains 1 AWS domain.  
Contains 1 BAH domain.  
Contains 1 bromo domain.  
Contains 1 PHD-type zinc finger.  
Contains 1 post-SET domain.  
Contains 1 SET domain.

### Cellular localization

Nucleus. Cell junction > tight junction. Chromosome. The relevance of tight junction localization is however unclear.

### Images



Anti-ASH1L antibody [ASH5H03] (ab50981) + Recombinant ASH1L (immunogen)

**Predicted band size:** 330 kDa

**Observed band size:** 35 kDa

[why is the actual band size different from the predicted?](#)

This antibody has only been tested in WB against the recombinant fragment used as immunogen. We have no data on the detection of endogenous protein.

**Please note:** All products are "FOR RESEARCH USE ONLY. NOT FOR USE IN DIAGNOSTIC PROCEDURES"

### Our Abpromise to you: Quality guaranteed and expert technical support

- Replacement or refund for products not performing as stated on the datasheet
- Valid for 12 months from date of delivery
- Response to your inquiry within 24 hours
- We provide support in Chinese, English, French, German, Japanese and Spanish
- Extensive multi-media technical resources to help you
- We investigate all quality concerns to ensure our products perform to the highest standards

If the product does not perform as described on this datasheet, we will offer a refund or replacement. For full details of the Abpromise, please visit <https://www.abcam.com/abpromise> or contact our technical team.

### Terms and conditions

- Guarantee only valid for products bought direct from Abcam or one of our authorized distributors