

Product datasheet

Anti-ASRGL1 antibody [CRASH/1289] ab218336

3 Images

Overview

Product name	Anti-ASRGL1 antibody [CRASH/1289]
Description	Mouse monoclonal [CRASH/1289] to ASRGL1
Host species	Mouse
Tested applications	Suitable for: IHC-P
Species reactivity	Reacts with: Human
Immunogen	Recombinant full length protein corresponding to Human ASRGL1 aa 1-308.

Sequence:

```
MNPVVVHGG GAGPISKDRK ERVHQGMVRA
ATVGYGILRE GGSVDAVEG AVVALEDDPE
FNAGCGSVLN TNGEVEMDAS IMDGKDLSAG
AVSAVQCIAN PIKLARLVME KTPHCFLTDQ
GAAQFAAAMG VPEIPGEKLV TERNKKRLEK
EKHEKGAQKT DCQKNLGTVG AVALDCKGNV
AYATSTGGIV NKMVGRVGDS PCLGAGGYAD
NDIGAVSTTG HGESILKVNL ARLTLFHIEQ GKTVEEAADL
SLGYMKSrvk GLGGLIVSK TGDWVAKWTS
TSMPWAAAKD GKLHFGIDPD DTTITDLP
```

Database link: [Q7L266](#)

 [Run BLAST with](#)

 [Run BLAST with](#)

Positive control Human fallopian tube, Human endometrium and Human uterus tissues.

General notes

Reproducibility is key to advancing scientific discovery and accelerating scientists' next breakthrough.

Abcam is leading the way with our range of recombinant antibodies, knockout-validated antibodies and knockout cell lines, all of which support improved reproducibility.

We are also planning to innovate the way in which we present recommended applications and species on our product datasheets, so that only applications & species that have been tested in our own labs, our suppliers or by selected trusted collaborators are covered by our Abpromise™ guarantee.

In preparation for this, we have started to update the applications & species that this product is Abpromise guaranteed for.

We are also updating the applications & species that this product has been “predicted to work

with," however this information is not covered by our Abpromise guarantee.

Applications & species from publications and Abreviews that have not been tested in our own labs or in those of our suppliers are not covered by the Abpromise guarantee.

Please check that this product meets your needs before purchasing. If you have any questions, special requirements or concerns, please send us an inquiry and/or contact our Support team ahead of purchase. Recommended alternatives for this product can be found below, as well as customer reviews and Q&As.

Properties

Form	Liquid
Storage instructions	Shipped at 4°C. Store at +4°C short term (1-2 weeks). Upon delivery aliquot. Store at -20°C long term. Avoid freeze / thaw cycle.
Storage buffer	Preservative: 0.05% Sodium azide Constituents: 99% PBS, 0.05% BSA
Purity	Protein A/G purified
Clonality	Monoclonal
Clone number	CRASH/1289
Isotype	IgG1

Applications

Our [Abpromise guarantee](#) covers the use of **ab218336** in the following tested applications.

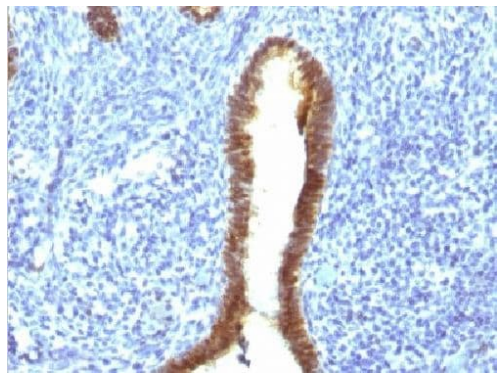
The application notes include recommended starting dilutions; optimal dilutions/concentrations should be determined by the end user.

Application	Abreviews	Notes
IHC-P		Use a concentration of 0.5 - 1 µg/ml. Perform heat mediated antigen retrieval with Tris/EDTA buffer pH 9.0 before commencing with IHC staining protocol.

Target

Relevance	ASRGL1 acts in asparagine catabolism. It may be involved in astroglial production of L-aspartate, which can act as an excitatory neurotransmitter in some brain regions.
Cellular localization	Cytoplasm. Note: Midpiece of sperm tail.

Images



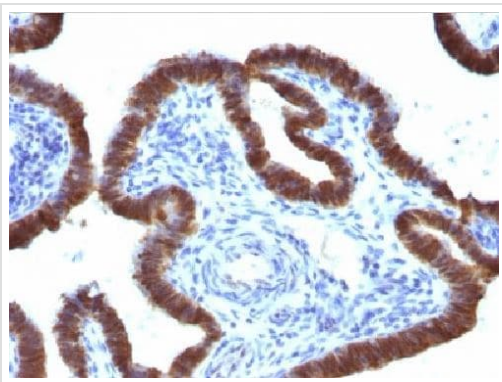
Immunohistochemistry (Formalin/PFA-fixed paraffin-embedded sections) - Anti-ASRGL1 antibody
[CRASH/1289] (ab218336)

Immunohistochemical analysis of formalin-fixed and paraffin-embedded Human uterus tissue labeling ASRGL1 with ab218336 at 1 $\mu\text{g/ml}$ dilution, followed by conjugation to the secondary antibody.



Immunohistochemistry (Formalin/PFA-fixed paraffin-embedded sections) - Anti-ASRGL1 antibody
[CRASH/1289] (ab218336)

Immunohistochemical analysis of formalin-fixed and paraffin-embedded Human endometrium tissue labeling ASRGL1 with ab218336 at 1 $\mu\text{g/ml}$ dilution, followed by conjugation to the secondary antibody.



Immunohistochemistry (Formalin/PFA-fixed paraffin-embedded sections) - Anti-ASRGL1 antibody [CRASH/1289] (ab218336)

Immunohistochemical analysis of formalin-fixed and paraffin-embedded Human fallopian tube tissue labeling ASRGL1 with ab218336 at 1 µg/ml dilution, followed by conjugation to the secondary antibody.

Please note: All products are "FOR RESEARCH USE ONLY. NOT FOR USE IN DIAGNOSTIC PROCEDURES"

Our Abpromise to you: Quality guaranteed and expert technical support

- Replacement or refund for products not performing as stated on the datasheet
- Valid for 12 months from date of delivery
- Response to your inquiry within 24 hours

- We provide support in Chinese, English, French, German, Japanese and Spanish
- Extensive multi-media technical resources to help you
- We investigate all quality concerns to ensure our products perform to the highest standards

If the product does not perform as described on this datasheet, we will offer a refund or replacement. For full details of the Abpromise, please visit <https://www.abcam.com/abpromise> or contact our technical team.

Terms and conditions

- Guarantee only valid for products bought direct from Abcam or one of our authorized distributors