




Product datasheet

Anti-Ataxin 1 antibody ab238105

1 Image

Overview

<b>Product name</b>	Anti-Ataxin 1 antibody
<b>Description</b>	Rabbit polyclonal to Ataxin 1
<b>Host species</b>	Rabbit
<b>Tested applications</b>	<b>Suitable for:</b> IHC-P
<b>Species reactivity</b>	<b>Reacts with:</b> Human <b>Predicted to work with:</b> Mouse, Rat 
<b>Immunogen</b>	Recombinant fragment corresponding to Human Ataxin 1 aa 586-815. Sequence:  ELKKVEDLKTEDFIQSAEISNDLKIDSSTVERIEDSHSP GVAVIQFAVGE HRAQVSVEVLVEYPPFFVFGQGWSGCCPERTSQLFDL PCSKLSVGDVCISL TLKNLKNGSVKKGQPVDPASVLLKHSKADGLAGSRH RYAEQENGINQGSA QMLSENGELKFPEKMGLPAAPFLTKIEPSKPAATRKR RWSAPESRKLEKS EDEPPLTLPKPSLIPQEVKICIEGRSNV/GK  Database link: <a href="#">P54253</a>   <a href="#">Run BLAST with</a>  <a href="#">Run BLAST with</a>
<b>Positive control</b>	IHC-P: Human gallbladder tissue.

Properties

<b>Form</b>	Liquid
<b>Storage instructions</b>	Shipped at 4°C. Store at +4°C short term (1-2 weeks). Upon delivery aliquot. Store at -20°C long term. Avoid freeze / thaw cycle.
<b>Storage buffer</b>	pH: 7.3 Preservative: 0.02% Sodium azide Constituents: 50% Glycerol, PBS
<b>Purity</b>	Immunogen affinity purified
<b>Clonality</b>	Polyclonal

Isotype

IgG

## Applications

---

Our [Abpromise guarantee](#) covers the use of **ab238105** in the following tested applications.

The application notes include recommended starting dilutions; optimal dilutions/concentrations should be determined by the end user.

Application	Abreviews	Notes
IHC-P		1/20 - 1/200.

---

## Target

---

### Function

Binds RNA in vitro. May be involved in RNA metabolism. The expansion of the polyglutamine tract may alter this function.

### Tissue specificity

Widely expressed throughout the body.

### Involvement in disease

Defects in ATXN1 are the cause of spinocerebellar ataxia type 1 (SCA1) [MIM:164400]; also known as olivopontocerebellar atrophy I (OPCA I or OPCA1). Spinocerebellar ataxia is a clinically and genetically heterogeneous group of cerebellar disorders. Patients show progressive incoordination of gait and often poor coordination of hands, speech and eye movements, due to cerebellum degeneration with variable involvement of the brainstem and spinal cord. SCA1 belongs to the autosomal dominant cerebellar ataxias type I (ADCA I) which are characterized by cerebellar ataxia in combination with additional clinical features like optic atrophy, ophthalmoplegia, bulbar and extrapyramidal signs, peripheral neuropathy and dementia. SCA1 is caused by expansion of a CAG repeat in the coding region of ATXN1. Longer expansions result in earlier onset and more severe clinical manifestations of the disease.

### Sequence similarities

Belongs to the ATXN1 family.  
Contains 1 AXH domain.

### Domain

The AXH domain is required for interaction with CIC.

### Post-translational modifications

Phosphorylation at Ser-775 increases the pathogenicity of proteins with an expanded polyglutamine tract.

Sumoylation is dependent on nuclear localization and phosphorylation at Ser-775. It is reduced in the presence of an expanded polyglutamine tract.

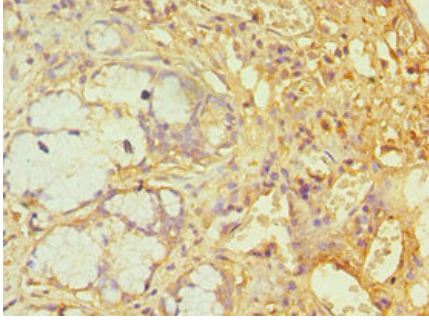
### Cellular localization

Cytoplasm. Nucleus. Colocalizes with USP7 in the nucleus.

---

## Images

---



Paraffin-embedded human gallbladder tissue stained for Ataxin 1 using ab238105 at 1/100 dilution in immunohistochemical analysis.

Immunohistochemistry (Formalin/PFA-fixed paraffin-embedded sections) - Anti-Ataxin 1 antibody (ab238105)

**Please note:** All products are "FOR RESEARCH USE ONLY. NOT FOR USE IN DIAGNOSTIC PROCEDURES"

### Our Abpromise to you: Quality guaranteed and expert technical support

---

- Replacement or refund for products not performing as stated on the datasheet
- Valid for 12 months from date of delivery
- Response to your inquiry within 24 hours
- We provide support in Chinese, English, French, German, Japanese and Spanish
- Extensive multi-media technical resources to help you
- We investigate all quality concerns to ensure our products perform to the highest standards

If the product does not perform as described on this datasheet, we will offer a refund or replacement. For full details of the Abpromise, please visit <https://www.abcam.com/abpromise> or contact our technical team.

### Terms and conditions

---

- Guarantee only valid for products bought direct from Abcam or one of our authorized distributors