

Product datasheet

Anti-ATF1 antibody ab231180

3 Images

Overview

Product name	Anti-ATF1 antibody
Description	Rabbit polyclonal to ATF1
Host species	Rabbit
Tested applications	Suitable for: WB, IHC-P
Species reactivity	Reacts with: Mouse, Rat
Immunogen	<p>Recombinant fragment (His-T7-tag) corresponding to Rat ATF1 aa 2-240. (Expressed in E.coli). Sequence:</p> <p>EDSHKSNTSETASQPGSTVPGIISQVHQVSSLSESEESQ DSSDSIGSSQ KAHGILARRPSYRKILKDLSSDTRGRKGDGENPISAVTS MSVPTPIYQ TSSGQYIAIPNGALQLASPGPDGVQALQTLTMTNSSSAQ QGAILQYAQT SDGQQILVPSNQVVVQTASGDMQTYQIRTPSATSLPQTM VMTSPVTLTS QTTKTDDPQLKREIRLMKNREAARECRRKKKEYVKLEN</p>

Database link: [F7FD47](#)

 [Run BLAST with](#)

 [Run BLAST with](#)

Positive control IHC-P: Rat uterus tissue. WB: Mouse lung lysate; Recombinant rat ATF1 protein.

General notes

Reproducibility is key to advancing scientific discovery and accelerating scientists' next breakthrough.

Abcam is leading the way with our range of recombinant antibodies, knockout-validated antibodies and knockout cell lines, all of which support improved reproducibility.

We are also planning to innovate the way in which we present recommended applications and species on our product datasheets, so that only applications & species that have been tested in our own labs, our suppliers or by selected trusted collaborators are covered by our Abpromise™ guarantee.

In preparation for this, we have started to update the applications & species that this product is Abpromise guaranteed for.

We are also updating the applications & species that this product has been “predicted to work with,” however this information is not covered by our Abpromise guarantee.

Applications & species from publications and Abreviews that have not been tested in our own labs or in those of our suppliers are not covered by the Abpromise guarantee.

Please check that this product meets your needs before purchasing. If you have any questions, special requirements or concerns, please send us an inquiry and/or contact our Support team ahead of purchase. Recommended alternatives for this product can be found below, as well as customer reviews and Q&As.

Properties

Form	Liquid
Storage instructions	Shipped at 4°C. Store at +4°C short term (1-2 weeks). Upon delivery aliquot. Store at -20°C long term. Avoid freeze / thaw cycle.
Storage buffer	pH: 7.40 Preservative: 0.02% Sodium azide Constituents: PBS, 50% Glycerol
Purity	Immunogen affinity purified
Purification notes	ab231180 was purified by antigen-specific affinity chromatography followed by Protein A affinity chromatography.
Clonality	Polyclonal
Isotype	IgG

Applications

Our [Abpromise guarantee](#) covers the use of **ab231180** in the following tested applications.

The application notes include recommended starting dilutions; optimal dilutions/concentrations should be determined by the end user.

Application	Abreviews	Notes
WB		Use a concentration of 0.2 - 2 µg/ml. Predicted molecular weight: 29 kDa.
IHC-P		Use a concentration of 5 - 20 µg/ml.

Target

Function	This protein binds the cAMP response element (CRE) (consensus: 5'-GTGACGT[AC][AG]-3'), a sequence present in many viral and cellular promoters. Binds to the Tax-responsive element (TRE) of HTLV-I. Mediates PKA-induced stimulation of CRE-reporter genes.
Involvement in disease	Defects in ATF1 may be a cause of angiomatoid fibrous histiocytoma (AFH) [MIM:612160]. A distinct variant of malignant fibrous histiocytoma that typically occurs in children and adolescents and is manifest by nodular subcutaneous growth. Characteristic microscopic features include lobulated sheets of histiocyte-like cells intimately associated with areas of hemorrhage and cystic pseudovascular spaces, as well as a striking cuffing of inflammatory cells, mimicking a lymph node metastasis. Note=Chromosomal aberrations involving ATF1 are found in patients with angiomatoid fibrous histiocytoma. Translocation t(12;16)(q13;p11.2) with FUS generates a chimeric ATF1/FUS protein. Translocation t(12;22)(q13;q12) with EWSR1 generates a chimeric

ATF1/EWSR1 protein.

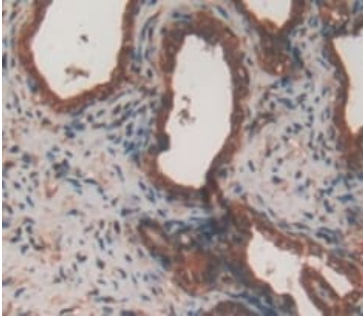
Sequence similarities

Belongs to the bZIP family. ATF subfamily.
Contains 1 bZIP domain.
Contains 1 KID (kinase-inducible) domain.

Cellular localization

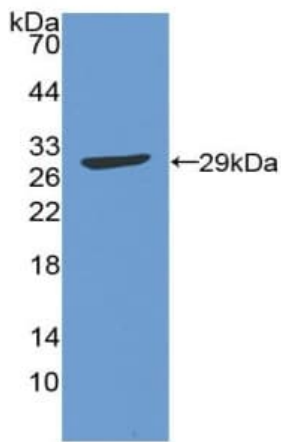
Nucleus.

Images



Formalin-fixed, paraffin-embedded rat uterus tissue stained for ATF1 using ab231180 at 20 µg/ml in immunohistochemical analysis. DAB staining.

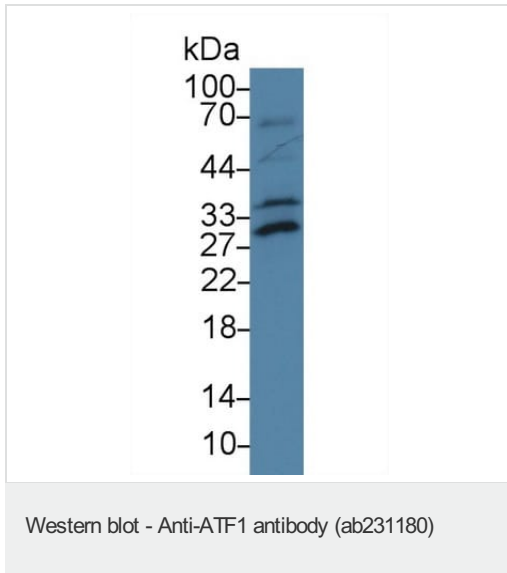
Immunohistochemistry (Formalin/PFA-fixed paraffin-embedded sections) - Anti-ATF1 antibody (ab231180)



Anti-ATF1 antibody (ab231180) at 2 µg/ml + Recombinant rat ATF1 protein

Predicted band size: 29 kDa

Western blot - Anti-ATF1 antibody (ab231180)



Anti-ATF1 antibody (ab231180) at 2 µg/ml + Mouse lung lysate

Predicted band size: 29 kDa

Please note: All products are "FOR RESEARCH USE ONLY. NOT FOR USE IN DIAGNOSTIC PROCEDURES"

Our Abpromise to you: Quality guaranteed and expert technical support

- Replacement or refund for products not performing as stated on the datasheet
- Valid for 12 months from date of delivery
- Response to your inquiry within 24 hours
- We provide support in Chinese, English, French, German, Japanese and Spanish
- Extensive multi-media technical resources to help you
- We investigate all quality concerns to ensure our products perform to the highest standards

If the product does not perform as described on this datasheet, we will offer a refund or replacement. For full details of the Abpromise, please visit <https://www.abcam.com/abpromise> or contact our technical team.

Terms and conditions

- Guarantee only valid for products bought direct from Abcam or one of our authorized distributors