


Product datasheet

Anti-ATF2 (phospho S62 + S44) antibody ab28847

3 Images

Overview

Product name	Anti-ATF2 (phospho S62 + S44) antibody
Description	Rabbit polyclonal to ATF2 (phospho S62 + S44)
Host species	Rabbit
Specificity	ab28847 recognises Phospho-ATF-2(Ser44)
Tested applications	Suitable for: IHC-P, WB
Species reactivity	Reacts with: Human Predicted to work with: Mouse, Rat 
Immunogen	Synthetic phosphopeptide derived from human ATF-2 around the phosphorylation site of Serine 62 or 44.
Positive control	HeLa lysate; Breast carcinoma.
General notes	<p>Reproducibility is key to advancing scientific discovery and accelerating scientists' next breakthrough.</p> <p>Abcam is leading the way with our range of recombinant antibodies, knockout-validated antibodies and knockout cell lines, all of which support improved reproducibility.</p> <p>We are also planning to innovate the way in which we present recommended applications and species on our product datasheets, so that only applications & species that have been tested in our own labs, our suppliers or by selected trusted collaborators are covered by our Abpromise™ guarantee.</p> <p>In preparation for this, we have started to update the applications & species that this product is Abpromise guaranteed for.</p> <p>We are also updating the applications & species that this product has been “predicted to work with,” however this information is not covered by our Abpromise guarantee.</p> <p>Applications & species from publications and Abreviews that have not been tested in our own labs or in those of our suppliers are not covered by the Abpromise guarantee.</p> <p>Please check that this product meets your needs before purchasing. If you have any questions, special requirements or concerns, please send us an inquiry and/or contact our Support team ahead of purchase. Recommended alternatives for this product can be found below, as well as customer reviews and Q&As.</p>

Properties

Form	Liquid
Storage instructions	Shipped at 4°C. Store at +4°C short term (1-2 weeks). Upon delivery aliquot. Store at -20°C long term.
Storage buffer	pH: 7.40 Preservative: 0.02% Sodium azide Constituents: PBS, 50% Glycerol (glycerin, glycerine), 0.87% Sodium chloride
Purity	Without Mg ²⁺ and Ca ²⁺ Immunogen affinity purified
Purification notes	The antibody was affinity purified from rabbit antiserum by affinity chromatography using epitope specific phosphopeptide. The antibody against non-phosphopeptide was removed by chromatography using non-phosphopeptide corresponding to the phosphorylation site.
Clonality	Polyclonal
Isotype	IgG

Applications

Our [Abpromise guarantee](#) covers the use of **ab28847** in the following tested applications.

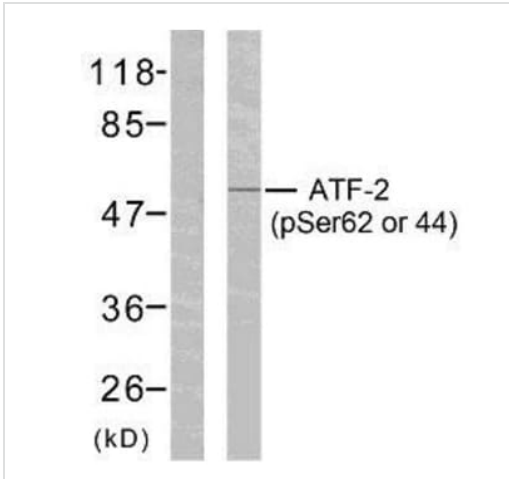
The application notes include recommended starting dilutions; optimal dilutions/concentrations should be determined by the end user.

Application	Abreviews	Notes
IHC-P		Use at an assay dependent concentration.
WB		1/500 - 1/1000. Detects a band of approximately 52 kDa (predicted molecular weight: 52 kDa).

Target

Function	Transcriptional activator, probably constitutive, which binds to the cAMP-responsive element (CRE) (consensus: 5'-GTGACGT[AC][AG]-3'), a sequence present in many viral and cellular promoters. Interaction with JUN redirects JUN to bind to CREs preferentially over the 12-O-tetradecanoylphorbol-13-acetate response elements (TRES) as part of an ATF2/JUN complex.
Tissue specificity	Abundant expression seen in the brain.
Sequence similarities	Belongs to the bZIP family. ATF subfamily. Contains 1 bZIP domain. Contains 1 C2H2-type zinc finger.
Post-translational modifications	Phosphorylation of Thr-69 and Thr-71 by MAPK14 causes increased transcriptional activity. Also phosphorylated and activated by JNK.
Cellular localization	Nucleus.

Images



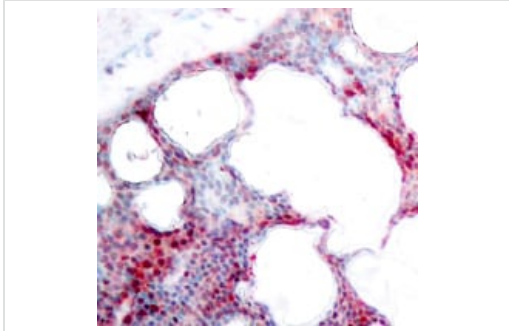
Western blot - Anti-ATF2 (phospho S62 + S44) antibody (ab28847)

All lanes : Anti-ATF2 (phospho S62 + S44) antibody (ab28847)

Lane 1 : HeLa cells treated with TNF-alpha with phospho peptide

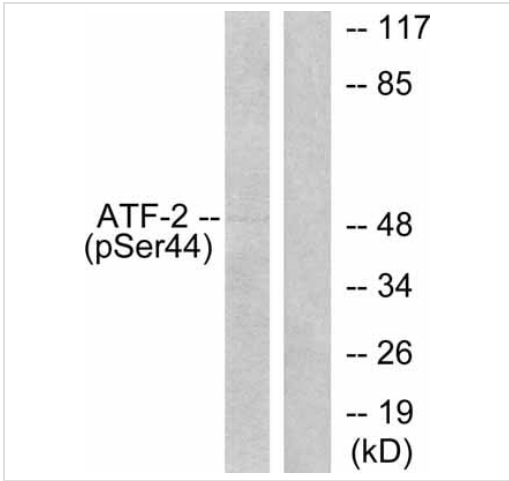
Lane 2 : HeLa cells treated with TNF-alpha

Predicted band size: 52 kDa



Immunohistochemistry (Formalin/PFA-fixed paraffin-embedded sections) - Anti-ATF2 (phospho S62 + S44) antibody (ab28847)

Immunohistochemistry (Paraffin-embedded sections) analysis of human breast carcinoma labeling ATF2 with ab28847.



Western blot - Anti-ATF2 (phospho S62 + S44) antibody (ab28847)

All lanes : Anti-ATF2 (phospho S62 + S44) antibody (ab28847)

Lane 1 : Hela Lysate with Immunizing peptide

Lane 2 : Hela Lysate

Predicted band size: 52 kDa

Please note: All products are "FOR RESEARCH USE ONLY. NOT FOR USE IN DIAGNOSTIC PROCEDURES"

Our Abpromise to you: Quality guaranteed and expert technical support

- Replacement or refund for products not performing as stated on the datasheet
- Valid for 12 months from date of delivery
- Response to your inquiry within 24 hours

- We provide support in Chinese, English, French, German, Japanese and Spanish
- Extensive multi-media technical resources to help you
- We investigate all quality concerns to ensure our products perform to the highest standards

If the product does not perform as described on this datasheet, we will offer a refund or replacement. For full details of the Abpromise, please visit <https://www.abcam.com/abpromise> or contact our technical team.

Terms and conditions

- Guarantee only valid for products bought direct from Abcam or one of our authorized distributors