




## Product datasheet

# Anti-ATF7 antibody ab87844

[2 Images](#)

### Overview

---

<b>Product name</b>	Anti-ATF7 antibody
<b>Description</b>	Rabbit polyclonal to ATF7
<b>Host species</b>	Rabbit
<b>Tested applications</b>	<b>Suitable for:</b> WB, IP
<b>Species reactivity</b>	<p><b>Reacts with:</b> Human</p> <p><b>Predicted to work with:</b> Mouse, Rat, Horse, Cow, Dog, Pig, Chimpanzee, Rhesus monkey, Gorilla, Chinese hamster, Orangutan, Elephant </p>
<b>Immunogen</b>	<p>Synthetic peptide corresponding to a region within the C terminal amino acids 444-494 (ATAPSNGLSV RSAAEAVATS VLTQMASQRT ELSMPIQSHV IMTPQSQSAG R) of human ATF7 (CAA40483.1).</p> <p> <a href="#">Run BLAST with ExPASy</a>  <a href="#">Run BLAST with NCBI</a></p>
<b>Positive control</b>	HeLa whole cell lysate
<b>General notes</b>	<p>Reproducibility is key to advancing scientific discovery and accelerating scientists' next breakthrough.</p> <p>Abcam is leading the way with our range of recombinant antibodies, knockout-validated antibodies and knockout cell lines, all of which support improved reproducibility.</p> <p>We are also planning to innovate the way in which we present recommended applications and species on our product datasheets, so that only applications &amp; species that have been tested in our own labs, our suppliers or by selected trusted collaborators are covered by our Abpromise™ guarantee.</p> <p>In preparation for this, we have started to update the applications &amp; species that this product is Abpromise guaranteed for.</p> <p>We are also updating the applications &amp; species that this product has been “predicted to work with,” however this information is not covered by our Abpromise guarantee.</p> <p>Applications &amp; species from publications and Abreviews that have not been tested in our own labs or in those of our suppliers are not covered by the Abpromise guarantee.</p> <p>Please check that this product meets your needs before purchasing. If you have any questions, special requirements or concerns, please send us an inquiry and/or contact our Support team ahead of purchase. Recommended alternatives for this product can be found below, as well as customer reviews and Q&amp;As.</p>

## Properties

---

<b>Form</b>	Liquid
<b>Storage instructions</b>	Shipped at 4°C. Upon delivery aliquot and store at -20°C. Avoid freeze / thaw cycles.
<b>Storage buffer</b>	pH: 7 Preservative: 0.09% Sodium azide Constituent: Tris citrate/phosphate
<b>Purity</b>	Immunogen affinity purified
<b>Purification notes</b>	Affinity purified using an epitope specific to ATF7 immobilized on solid support.
<b>Clonality</b>	Polyclonal
<b>Isotype</b>	IgG

## Applications

---

Our [Abpromise guarantee](#) covers the use of **ab87844** in the following tested applications.

The application notes include recommended starting dilutions; optimal dilutions/concentrations should be determined by the end user.

Application	Abreviews	Notes
WB		
IP		

---

<b>Application notes</b>	IP: Use at 10 µg/mg of lysate. WB: 1/2000 - 1/10,000. Predicted molecular weight: 53 kDa.  Not yet tested in other applications. Optimal dilutions/concentrations should be determined by the end user.
--------------------------	---------------------------------------------------------------------------------------------------------------------------------------------------------------------------------------------------------------------

## Target

---

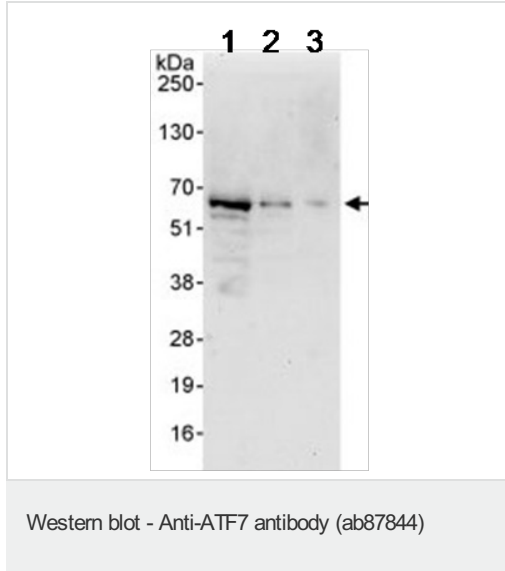
<b>Function</b>	Plays important functions in early cell signaling. Binds the cAMP response element (CRE) (consensus: 5'-GTGACGT[AG][AG]-3'), a sequence present in many viral and cellular promoters. Activator of the NF-ELAM1/delta-A site of the E-selectin promoter. Has no intrinsic transcriptional activity, but activates transcription on formation of JUN or FOS heterodimers. Also can bind TRE promoter sequences when heterodimerized with members of the JUN family. Isoform 4/ATF-A0 acts as a dominant repressor of the E-selectin/NF-ELAM1/delta-A promoter.
<b>Tissue specificity</b>	Expressed in heart, lung and skeletal muscle. Isoform 4 is expressed in various tissues including heart, brain, placenta, lung and skeletal muscle. Highest levels in skeletal muscle. Lowest in lung and placenta.
<b>Sequence similarities</b>	Belongs to the bZIP family. Contains 1 bZIP domain. Contains 1 C2H2-type zinc finger.
<b>Post-translational modifications</b>	On EGF stimulation, phosphorylated first on Thr-53 allowing subsequent phosphorylation on Thr-51. This latter phosphorylation prevents sumoylation, increases binding to TAF12 and enhances transcriptional activity. Sumoylation delays nuclear localization and inhibits transactivation activity through preventing

binding to TAF12. RANBP2 appears to be the specific E3 ligase.

## Cellular localization

Nucleus. Nucleus > nucleoplasm. Mainly nucleoplasmic. Restricted distribution to the perinuclear region. The sumoylated form locates to the nuclear periphery.

## Images



**All lanes :** Anti-ATF7 antibody (ab87844) at 0.1 µg/ml

**Lane 1 :** HeLa whole cell lysate at 50 µg

**Lane 2 :** HeLa whole cell lysate at 15 µg

**Lane 3 :** HeLa whole cell lysate at 5 µg

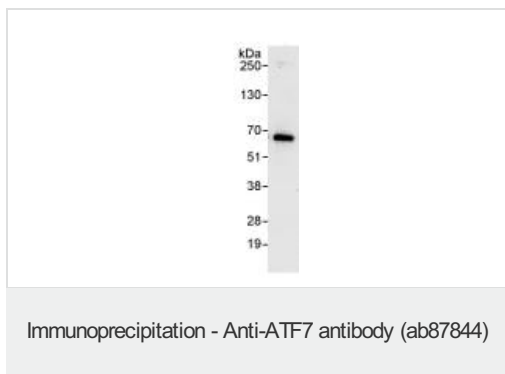
Developed using the ECL technique.

**Predicted band size:** 53 kDa

**Observed band size:** 63 kDa

[why is the actual band size different from the predicted?](#)

**Exposure time:** 30 seconds



Detection of human ATF7 by Immunoprecipitation from HeLa whole cell lysate (1 mg for IP, 20% of IP loaded), using ab87844 at 10 µg/mg lysate for IP. Subsequent Western blot detection used ab87844 at 1 µg/ml.

Developed using the ECL technique, with an exposure time of 10 seconds.

**Please note:** All products are "FOR RESEARCH USE ONLY. NOT FOR USE IN DIAGNOSTIC PROCEDURES"

## Our Abpromise to you: Quality guaranteed and expert technical support

- Replacement or refund for products not performing as stated on the datasheet
- Valid for 12 months from date of delivery
- Response to your inquiry within 24 hours
- We provide support in Chinese, English, French, German, Japanese and Spanish
- Extensive multi-media technical resources to help you
- We investigate all quality concerns to ensure our products perform to the highest standards

If the product does not perform as described on this datasheet, we will offer a refund or replacement. For full details of the Abpromise, please visit <https://www.abcam.com/abpromise> or contact our technical team.

## Terms and conditions

---

- Guarantee only valid for products bought direct from Abcam or one of our authorized distributors