

Product datasheet

Anti-ATG4C antibody - C-terminal ab191705

1 References 3 Images

Overview

Product name	Anti-ATG4C antibody - C-terminal
Description	Rabbit polyclonal to ATG4C - C-terminal
Host species	Rabbit
Specificity	ab191705 is predicted to not cross-react with other ATG4 proteins.
Tested applications	Suitable for: WB, IHC-P
Species reactivity	Reacts with: Mouse, Rat, Human
Immunogen	Synthetic peptide corresponding to Human ATG4C (C terminal). An 18 amino acid peptide near the carboxy terminus of Human ATG4C. NP_835739. Database link: Q96DT6
Positive control	A549 cell lysate. Human lung tissue.
General notes	<p>Reproducibility is key to advancing scientific discovery and accelerating scientists' next breakthrough.</p> <p>Abcam is leading the way with our range of recombinant antibodies, knockout-validated antibodies and knockout cell lines, all of which support improved reproducibility.</p> <p>We are also planning to innovate the way in which we present recommended applications and species on our product datasheets, so that only applications & species that have been tested in our own labs, our suppliers or by selected trusted collaborators are covered by our Abpromise™ guarantee.</p> <p>In preparation for this, we have started to update the applications & species that this product is Abpromise guaranteed for.</p> <p>We are also updating the applications & species that this product has been "predicted to work with," however this information is not covered by our Abpromise guarantee.</p> <p>Applications & species from publications and Abreviews that have not been tested in our own labs or in those of our suppliers are not covered by the Abpromise guarantee.</p> <p>Please check that this product meets your needs before purchasing. If you have any questions, special requirements or concerns, please send us an inquiry and/or contact our Support team ahead of purchase. Recommended alternatives for this product can be found below, as well as customer reviews and Q&As.</p>

Properties

Form	Liquid
Storage instructions	Shipped at 4°C. Store at +4°C short term (1-2 weeks). Upon delivery aliquot. Store at -20°C long term. Avoid freeze / thaw cycle.
Storage buffer	pH: 7.2 Preservative: 0.02% Sodium azide Constituent: 99% PBS
Purity	Immunogen affinity purified
Clonality	Polyclonal
Isotype	IgG

Applications

Our [Abpromise guarantee](#) covers the use of **ab191705** in the following tested applications.

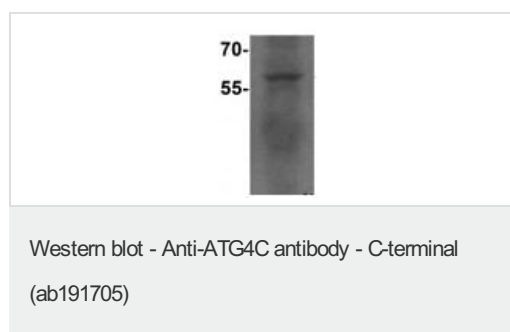
The application notes include recommended starting dilutions; optimal dilutions/concentrations should be determined by the end user.

Application	Abreviews	Notes
WB		Use a concentration of 1 - 2 µg/ml. Detects a band of approximately 57 kDa (predicted molecular weight: 52 kDa).
IHC-P		Use a concentration of 5 - 20 µg/ml.

Target

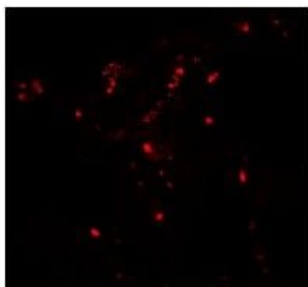
Function	Cysteine protease required for autophagy, which cleaves the C-terminal part of either MAP1LC3, GABARAPL2 or GABARAP, allowing the liberation of form I. A subpopulation of form I is subsequently converted to a smaller form (form II). Form II, with a revealed C-terminal glycine, is considered to be the phosphatidylethanolamine (PE)-conjugated form, and has the capacity for the binding to autophagosomes.
Tissue specificity	Highly expressed in skeletal muscle, heart, liver and testis.
Sequence similarities	Belongs to the peptidase C54 family.
Cellular localization	Cytoplasm.

Images



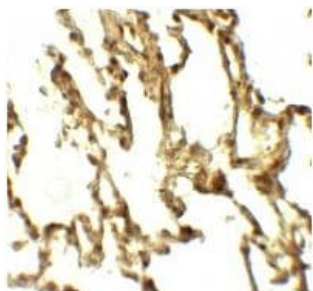
Anti-ATG4C antibody - C-terminal (ab191705) at 1 µg/ml + A549 cell lysate at 15 µg

Predicted band size: 52 kDa



Immunofluorescent analysis of human lung tissue labeling ATG4C with [ab181391](#) at 20 µg/ml

Immunohistochemistry (Formalin/PFA-fixed paraffin-embedded sections) - Anti-ATG4C antibody - C-terminal ([ab191705](#))



Immunohistochemical analysis of human lung tissue labeling ATG4C with [ab191705](#) at 5 µg/ml.

Immunohistochemistry (Formalin/PFA-fixed paraffin-embedded sections) - Anti-ATG4C antibody - C-terminal ([ab191705](#))

Please note: All products are "FOR RESEARCH USE ONLY. NOT FOR USE IN DIAGNOSTIC PROCEDURES"

Our Abpromise to you: Quality guaranteed and expert technical support

- Replacement or refund for products not performing as stated on the datasheet
- Valid for 12 months from date of delivery
- Response to your inquiry within 24 hours
- We provide support in Chinese, English, French, German, Japanese and Spanish
- Extensive multi-media technical resources to help you
- We investigate all quality concerns to ensure our products perform to the highest standards

If the product does not perform as described on this datasheet, we will offer a refund or replacement. For full details of the Abpromise, please visit <https://www.abcam.com/abpromise> or contact our technical team.

Terms and conditions

- Guarantee only valid for products bought direct from Abcam or one of our authorized distributors