

Product datasheet

Anti-ATHL1 antibody [EPR13421] ab205302

Recombinant RabMAb

4 Images

Overview

<b>Product name</b>	Anti-ATHL1 antibody [EPR13421]
<b>Description</b>	Rabbit monoclonal [EPR13421] to ATHL1
<b>Host species</b>	Rabbit
<b>Tested applications</b>	<b>Suitable for:</b> WB, ICC/IF
<b>Species reactivity</b>	<b>Reacts with:</b> Human
<b>Immunogen</b>	Recombinant fragment within Human ATHL1 aa 1-100. The exact sequence is proprietary. Database link: <a href="#">Q32M88</a>
<b>Positive control</b>	WB: Human fetal liver and fetal kidney lysates; BxPC-3 and MCF7 whole cell lysates. ICC/IF: MCF7 and BxPC-3 cells.

General notes

This product is a recombinant monoclonal antibody, which offers several advantages including:

- High batch-to-batch consistency and reproducibility
- Improved sensitivity and specificity
- Long-term security of supply
- Animal-free production

For more information [see here](#).

Our RabMAb<sup>®</sup> technology is a patented hybridoma-based technology for making rabbit monoclonal antibodies. For details on our patents, please refer to [RabMAb<sup>®</sup> patents](#).

Properties

<b>Form</b>	Liquid
<b>Storage instructions</b>	Shipped at 4°C. Store at +4°C short term (1-2 weeks). Upon delivery aliquot. Store at -20°C long term. Avoid freeze / thaw cycle.
<b>Storage buffer</b>	Preservative: 0.01% Sodium azide Constituents: 59% PBS, 40% Glycerol, 0.05% BSA
<b>Purity</b>	Protein A purified
<b>Clonality</b>	Monoclonal

Clone number EPR13421

Isotype IgG

## Applications

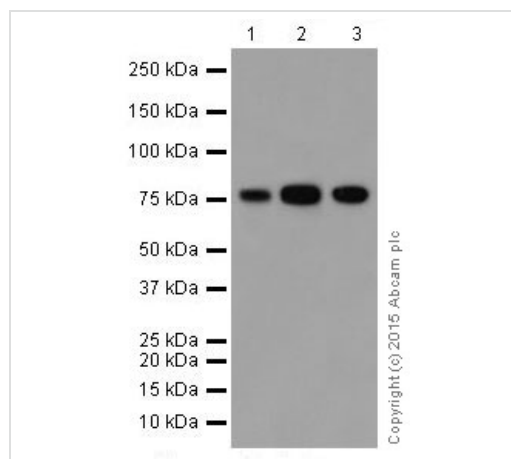
Our [Abpromise guarantee](#) covers the use of **ab205302** in the following tested applications.

The application notes include recommended starting dilutions; optimal dilutions/concentrations should be determined by the end user.

Application	Abreviews	Notes
WB		1/1000. Detects a band of approximately 80 kDa (predicted molecular weight: 80 kDa).
ICC/IF		1/250.

## Target

## Images



Western blot - Anti-ATHL1 antibody [EPR13421] (ab205302)

**All lanes :** Anti-ATHL1 antibody [EPR13421] (ab205302) at 1/1000 dilution

**Lane 1 :** Human fetal liver lysate

**Lane 2 :** BxPC-3 (Human pancreas adenocarcinoma cells) whole cell lysate

**Lane 3 :** MCF7 (Human breast adenocarcinoma cell line) whole cell lysate

Lysates/proteins at 10 µg per lane.

### Secondary

**All lanes :** Anti-Rabbit IgG (HRP), specific to the non-reduced form of IgG at 1/10000 dilution

**Predicted band size:** 80 kDa

**Observed band size:** 80 kDa

**Exposure time:** 1 minute

Blocking/Dilution buffer: 5% NFDm/TBST.

Western blot - Anti-ATHL1 antibody [EPR13421]  
(ab205302)

Anti-ATHL1 antibody [EPR13421] (ab205302) at 1/1000 dilution +  
Human fetal kidney lysate at 10 µg

### Secondary

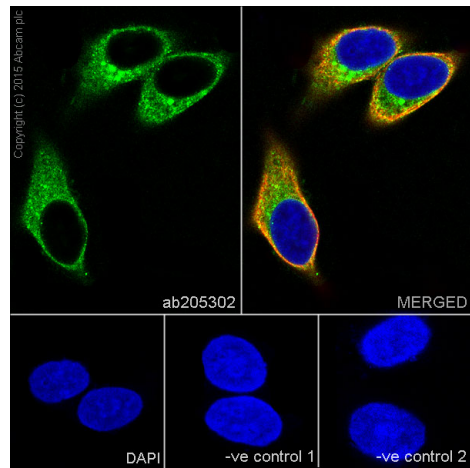
Anti-Rabbit IgG (HRP), specific to the non-reduced form of IgG at  
1/10000 dilution

**Predicted band size:** 80 kDa

**Observed band size:** 80 kDa

**Exposure time:** 3 minutes

Blocking/Dilution buffer: 5% NFDM/TBST.



Immunocytochemistry/ Immunofluorescence - Anti-  
ATHL1 antibody [EPR13421] (ab205302)

Immunofluorescent analysis of 100% Methanol-fixed, 0.1% Triton X-  
100 permeabilized MCF7 (Human breast adenocarcinoma cell line)  
cells labeling ATHL1 with ab205302 at 1/250 dilution, followed by  
Goat anti-rabbit IgG (Alexa Fluor® 488) (ab150077) secondary  
antibody at 1/1000 dilution (green).

Confocal image showing cytoplasmic staining on MCF-7 cell line.

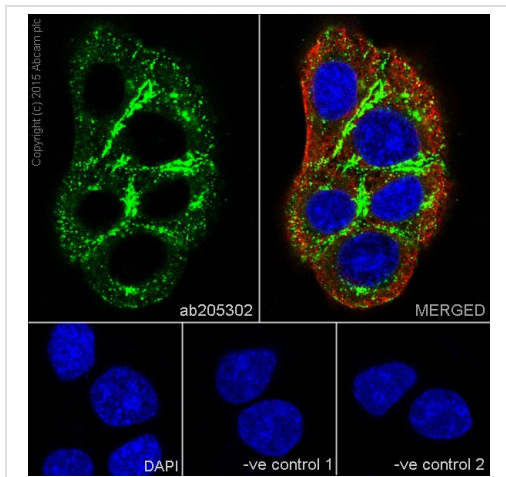
The nuclear counterstain is DAPI (blue).

Tubulin is detected with ab7291 (anti-Tubulin mouse mAb) at  
1/1000 dilution and ab150120 (AlexaFluor®594 Goat anti-Mouse  
secondary) at 1/1000 dilution (red).

The negative controls are as follows:-

-ve control 1: ab205302 at 1/250 dilution followed by ab150120  
(AlexaFluor®594 Goat anti-Mouse secondary) at 1/1000 dilution.

-ve control 2: ab7291 (anti-Tubulin mouse mAb) at 1/1000 dilution  
followed by ab150077 (Alexa Fluor®488 Goat Anti-Rabbit IgG  
H&L) at 1/1000 dilution.



Immunocytochemistry/ Immunofluorescence - Anti-ATHL1 antibody [EPR13421] (ab205302)

Immunofluorescent analysis of 100% Methanol-fixed, 0.1% Triton X-100 permeabilized BxPC-3 (Human pancreas adenocarcinoma cells) cells labeling ATHL1 with ab205302 at 1/250 dilution, followed by Goat anti-rabbit IgG (Alexa Fluor® 488) (ab150077) secondary antibody at 1/1000 dilution (green).

Confocal image showing cytoplasmic staining on BxPC-3 cell line.

The nuclear counterstain is DAPI (blue).

Tubulin is detected with ab7291 (anti-Tubulin mouse mAb) at 1/1000 dilution and ab150120 (AlexaFluor®594 Goat anti-Mouse secondary) at 1/1000 dilution (red).

The negative controls are as follows:-

-ve control 1: ab205302 at 1/250 dilution followed by ab150120 (AlexaFluor®594 Goat anti-Mouse secondary) at 1/1000 dilution.

-ve control 2: ab7291 (anti-Tubulin mouse mAb) at 1/1000 dilution followed by ab150077 (Alexa Fluor®488 Goat Anti-Rabbit IgG H&L) at 1/1000 dilution.

**Please note:** All products are "FOR RESEARCH USE ONLY. NOT FOR USE IN DIAGNOSTIC PROCEDURES"

### Our Abpromise to you: Quality guaranteed and expert technical support

- Replacement or refund for products not performing as stated on the datasheet
- Valid for 12 months from date of delivery
- Response to your inquiry within 24 hours
- We provide support in Chinese, English, French, German, Japanese and Spanish
- Extensive multi-media technical resources to help you
- We investigate all quality concerns to ensure our products perform to the highest standards

If the product does not perform as described on this datasheet, we will offer a refund or replacement. For full details of the Abpromise, please visit <https://www.abcam.com/abpromise> or contact our technical team.

### Terms and conditions

- Guarantee only valid for products bought direct from Abcam or one of our authorized distributors