

## Product datasheet

# Anti-ATOH8 antibody ab106377

3 References 1 Image

### Overview

---

|                            |  |
|----------------------------|--|
| <b>Product name</b>        | Anti-ATOH8 antibody  |
| <b>Description</b>         | Rabbit polyclonal to ATOH8   |
| <b>Host species</b>        | Rabbit   |
| <b>Tested applications</b> | <b>Suitable for:</b> WB  |
| <b>Species reactivity</b>  | <b>Reacts with:</b> Mouse, Rat, Human  |
| <b>Immunogen</b>           | Synthetic peptide corresponding to Human ATOH8 (C terminal).<br>Database link: <a href="#">NP_116216</a> |
| <b>General notes</b>       | This product was previously labelled as Protein atonal homolog 8   |

Reproducibility is key to advancing scientific discovery and accelerating scientists' next breakthrough.

Abcam is leading the way with our range of recombinant antibodies, knockout-validated antibodies and knockout cell lines, all of which support improved reproducibility.

We are also planning to innovate the way in which we present recommended applications and species on our product datasheets, so that only applications & species that have been tested in our own labs, our suppliers or by selected trusted collaborators are covered by our Abpromise™ guarantee.

In preparation for this, we have started to update the applications & species that this product is Abpromise guaranteed for.

We are also updating the applications & species that this product has been "predicted to work with," however this information is not covered by our Abpromise guarantee.

Applications & species from publications and Abreviews that have not been tested in our own labs or in those of our suppliers are not covered by the Abpromise guarantee.

Please check that this product meets your needs before purchasing. If you have any questions, special requirements or concerns, please send us an inquiry and/or contact our Support team ahead of purchase. Recommended alternatives for this product can be found below, as well as customer reviews and Q&As.

### Properties

---

|             |        |
|-------------|--------|
| <b>Form</b> | Liquid |
|-------------|--------|

|                             |  |
|-----------------------------|--|
| <b>Storage instructions</b> | Shipped at 4°C. Store at +4°C short term (1-2 weeks). Upon delivery aliquot. Store at -20°C long term. |
| <b>Storage buffer</b>       | pH: 7.2<br>Preservative: 0.02% Sodium azide<br>Constituent: PBS  |
| <b>Purity</b>               | Immunogen affinity purified  |
| <b>Clonality</b>            | Polyclonal   |
| <b>Isotype</b>              | IgG  |

## Applications

Our [Abpromise guarantee](#) covers the use of **ab106377** in the following tested applications.

The application notes include recommended starting dilutions; optimal dilutions/concentrations should be determined by the end user.

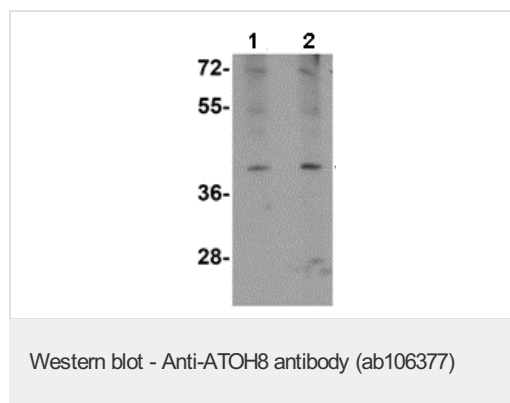
| Application | Abreviews | Notes   |
|-------------|-----------|---|
| WB          |           | Use a concentration of 1 - 2 µg/ml. Predicted molecular weight: 35 kDa. |

## Target

|                              |  |
|------------------------------|--|
| <b>Function</b>              | Putative transcription factor. May be implicated in specification and differentiation of neuronal cell lineages in the brain. May participate in kidney development and may be involved in podocyte differentiation. |
| <b>Tissue specificity</b>    | Expressed in lung, liver, kidney, heart and pancreas. Expressed in endothel of umbilical vessels.  |
| <b>Sequence similarities</b> | Contains 1 basic helix-loop-helix (bHLH) domain.   |
| <b>Cellular localization</b> | Nucleus.   |

|             |  |
|-------------|--|
| <b>Form</b> | Putative transcription factor. May be implicated in specification and differentiation of neuronal cell lineages in the brain. May participate in kidney development and may be involved in podocyte differentiation. Efficient DNA binding requires dimerization with another bHLH protein. Contains 1 basic helix-loop-helix (bHLH) domain. Cellular localisation: nucleus. |
|-------------|--|

## Images



**Lane 1** : Anti-ATOH8 antibody (ab106377) at 1 µg/ml

**Lane 2** : Anti-ATOH8 antibody (ab106377) at 2 µg/ml

**All lanes** : A-20 cell lysate

Lysates/proteins at 15 µg per lane.

**Predicted band size:** 35 kDa

**Please note:** All products are "FOR RESEARCH USE ONLY. NOT FOR USE IN DIAGNOSTIC PROCEDURES"

### **Our Abpromise to you: Quality guaranteed and expert technical support**

---

- Replacement or refund for products not performing as stated on the datasheet
- Valid for 12 months from date of delivery
- Response to your inquiry within 24 hours
  
- We provide support in Chinese, English, French, German, Japanese and Spanish
- Extensive multi-media technical resources to help you
- We investigate all quality concerns to ensure our products perform to the highest standards

If the product does not perform as described on this datasheet, we will offer a refund or replacement. For full details of the Abpromise, please visit <https://www.abcam.com/abpromise> or contact our technical team.

### **Terms and conditions**

---

- Guarantee only valid for products bought direct from Abcam or one of our authorized distributors