




Product datasheet

Anti-ATP13A1 antibody ab230786

2 Images

Overview

Product name	Anti-ATP13A1 antibody
Description	Goat polyclonal to ATP13A1
Host species	Goat
Tested applications	Suitable for: IHC-P, WB
Species reactivity	Reacts with: Human Predicted to work with: Mouse, Rat, Rabbit, Cow, Monkey 
Immunogen	Synthetic peptide within Human ATP13A1 aa 956-988 (internal sequence) (Cysteine residue). The exact sequence is proprietary. (NP_065143.2). Sequence: C-REAQARSPEKQEQ Database link: Q9HD20  Run BLAST with  Run BLAST with
Positive control	IHC-P: Human thyroid tissue. WB: Human kidney lysate.

Properties

Form	Liquid
Storage instructions	Shipped at 4°C. Store at +4°C short term (1-2 weeks). Upon delivery aliquot. Store at -20°C long term. Avoid freeze / thaw cycle.
Storage buffer	pH: 7.30 Preservative: 0.02% Sodium azide Constituents: Tris buffered saline, 0.5% BSA
Purity	Immunogen affinity purified
Clonality	Polyclonal
Isotype	IgG

Applications

Our [Abpromise guarantee](#) covers the use of **ab230786** in the following tested applications.

The application notes include recommended starting dilutions; optimal dilutions/concentrations should be determined by the end user.

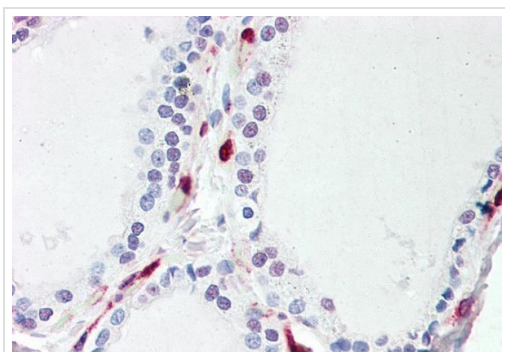
Application	Abreviews	Notes
IHC-P		Use a concentration of 5 µg/ml. Perform heat mediated antigen retrieval before commencing with IHC staining protocol.
WB		Use a concentration of 0.3 - 1 µg/ml. Predicted molecular weight: 133 kDa.

Target

Relevance ATP13A1 belongs to the cation transport ATPase (P type) family. Type V subfamily. There are three named isoforms produced by alternative splicing.

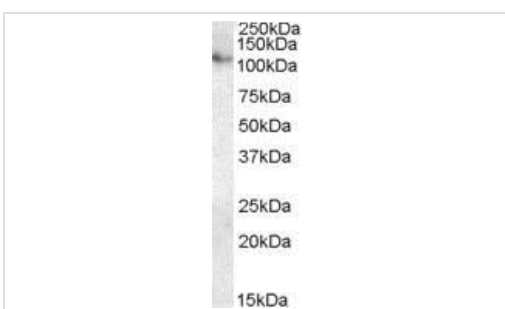
Cellular localization Membrane; Multi pass membrane protein.

Images



Immunohistochemistry (Formalin/PFA-fixed paraffin-embedded sections) - Anti-ATP13A1 antibody (ab230786)

Formalin-fixed, paraffin-embedded human thyroid tissue stained for ATP13A1 using ab230786 at 5 µg/ml in immunohistochemical analysis.



Western blot - Anti-ATP13A1 antibody (ab230786)

Anti-ATP13A1 antibody (ab230786) at 0.3 µg/ml + Human kidney lysate (in RIPA buffer) at 35 µg

Developed using the ECL technique.

Predicted band size: 133 kDa

Primary incubation was 1 hour.

Please note: All products are "FOR RESEARCH USE ONLY. NOT FOR USE IN DIAGNOSTIC PROCEDURES"

Our Abpromise to you: Quality guaranteed and expert technical support

- Replacement or refund for products not performing as stated on the datasheet
- Valid for 12 months from date of delivery
- Response to your inquiry within 24 hours

- We provide support in Chinese, English, French, German, Japanese and Spanish
- Extensive multi-media technical resources to help you
- We investigate all quality concerns to ensure our products perform to the highest standards

If the product does not perform as described on this datasheet, we will offer a refund or replacement. For full details of the Abpromise, please visit <https://www.abcam.com/abpromise> or contact our technical team.

Terms and conditions

- Guarantee only valid for products bought direct from Abcam or one of our authorized distributors