




Product datasheet

Anti-ATP1A3 antibody ab176598

1 References 1 Image

Overview

Product name	Anti-ATP1A3 antibody
Description	Rabbit polyclonal to ATP1A3
Host species	Rabbit
Tested applications	Suitable for: WB
Species reactivity	Reacts with: Human Predicted to work with: Mouse, Rat, Chicken 
Immunogen	Recombinant fragment corresponding to Human ATP1A3 aa 449-643. Sequence: CIELSSGSVKLMRERNKKVAEIPFNSTNKYQLSIHETED PNDNRYLLVMK GAPERILDRCSTILLQGKEQPLDEEMKEAFQNAYLELG GLGERVLGFCHY YLPEEQFPKGFADFDCDDVNFTDNLCFVGLMSMIDPP RAAVPDAVGKCRS AGIKVIMVTGDHPITAKAIKGVGIISEGNETVEDIAARLNI PVS Database link: P13637 <div style="text-align: right;">  Run BLAST with  Run BLAST with </div>
Positive control	293 cell lysate.
General notes	This product was previously labelled as alpha 3 Sodium Potassium ATPase

Properties

Form	Lyophilised:Reconstitute in 200ul sterile H2O.
Storage instructions	Shipped at 4°C. Store at +4°C short term (1-2 weeks). Upon delivery aliquot. Store at -20°C long term. Avoid freeze / thaw cycle.
Storage buffer	pH: 7.20 Preservative: 0.02% Sodium azide Constituents: 98% PBS, 1% BSA

Purity	Immunogen affinity purified
Clonality	Polyclonal
Isotype	IgG

Applications

Our [Abpromise guarantee](#) covers the use of **ab176598** in the following tested applications.

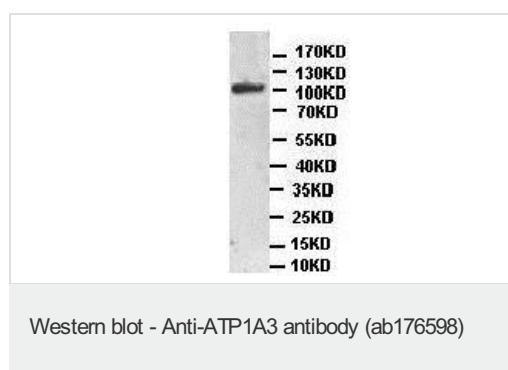
The application notes include recommended starting dilutions; optimal dilutions/concentrations should be determined by the end user.

Application	Abreviews	Notes
WB		1/200 - 1/1000. Predicted molecular weight: 111 kDa.

Target

Function	This is the catalytic component of the active enzyme, which catalyzes the hydrolysis of ATP coupled with the exchange of sodium and potassium ions across the plasma membrane. This action creates the electrochemical gradient of sodium and potassium ions, providing the energy for active transport of various nutrients.
Involvement in disease	Dystonia 12 Alternating hemiplegia of childhood 2 Cerebellar ataxia, areflexia, pes cavus, optic atrophy, and sensorineural hearing loss
Sequence similarities	Belongs to the cation transport ATPase (P-type) (TC 3.A.3) family. Type IIC subfamily.
Cellular localization	Cell membrane.

Images



Anti-ATP1A3 antibody (ab176598) at 1/500 dilution + 293 cell lysate

Predicted band size: 111 kDa

Please note: All products are "FOR RESEARCH USE ONLY AND ARE NOT INTENDED FOR DIAGNOSTIC OR THERAPEUTIC USE"

Our Abpromise to you: Quality guaranteed and expert technical support

- Replacement or refund for products not performing as stated on the datasheet
- Valid for 12 months from date of delivery

- Response to your inquiry within 24 hours
- We provide support in Chinese, English, French, German, Japanese and Spanish
- Extensive multi-media technical resources to help you
- We investigate all quality concerns to ensure our products perform to the highest standards

If the product does not perform as described on this datasheet, we will offer a refund or replacement. For full details of the Abpromise, please visit <https://www.abcam.com/abpromise> or contact our technical team.

Terms and conditions

- Guarantee only valid for products bought direct from Abcam or one of our authorized distributors