


Product datasheet

Anti-ATP1B1 antibody [464.8] ab8344

★★★★★ 1 Abreviews 12 References 2 Images

Overview

Product name	Anti-ATP1B1 antibody [464.8]
Description	Mouse monoclonal [464.8] to ATP1B1
Host species	Mouse
Tested applications	Suitable for: Flow Cyt, WB
Species reactivity	Reacts with: Human Predicted to work with: Rat, Cow, Dog, Pig 
Immunogen	Full length native protein (purified). This information is proprietary to Abcam and/or its suppliers.
Positive control	ab8344 gave a positive signal in human, mouse and rat kidney tissue lysates. In Flow Cytometry, this antibody gave a positive signal in methanol fixed/Tween permeabilised HepG2 cells.
General notes	<p>This antibody clone is manufactured by Abcam. If you require a custom buffer formulation or conjugation for your experiments, please contact orders@abcam.com.</p> <p>The Life Science industry has been in the grips of a reproducibility crisis for a number of years. Abcam is leading the way in addressing this with our range of recombinant monoclonal antibodies and knockout edited cell lines for gold-standard validation. Please check that this product meets your needs before purchasing.</p> <p>If you have any questions, special requirements or concerns, please send us an inquiry and/or contact our Support team ahead of purchase. Recommended alternatives for this product can be found below, along with publications, customer reviews and Q&As</p>

Properties

Form	Liquid
Storage instructions	Shipped at 4°C. Upon delivery aliquot. Store at -20°C or -80°C. Avoid freeze / thaw cycle.
Storage buffer	pH: 7.40 Preservative: 0.02% Sodium azide Constituent: PBS Contains 0.4M arginine
Purity	Protein G purified
Clonality	Monoclonal

Clone number	464.8
Isotype	IgG2a
Light chain type	kappa

Applications

The Abpromise guarantee Our [Abpromise guarantee](#) covers the use of ab8344 in the following tested applications.

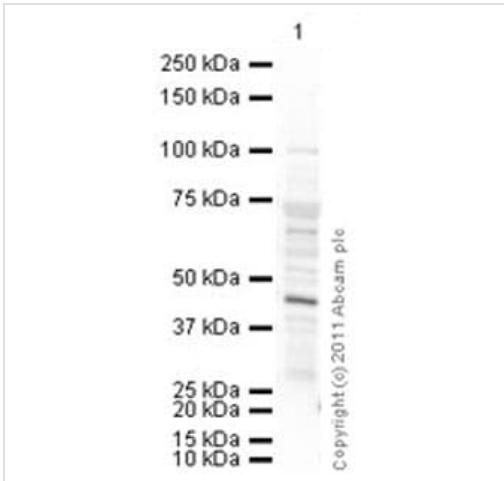
The application notes include recommended starting dilutions; optimal dilutions/concentrations should be determined by the end user.

Application	Abreviews	Notes
Flow Cyt		Use 1µg for 10 ⁶ cells. ab170191 - Mouse monoclonal IgG2a, is suitable for use as an isotype control with this antibody.
WB	★★★★★ (1)	1/500. Detects a band of approximately 45 kDa (predicted molecular weight: 35 kDa).

Target

Function	This is the non-catalytic component of the active enzyme, which catalyzes the hydrolysis of ATP coupled with the exchange of Na(+) and K(+) ions across the plasma membrane. The beta subunit regulates, through assembly of alpha/beta heterodimers, the number of sodium pumps transported to the plasma membrane.
Tissue specificity	Found in most tissues.
Sequence similarities	Belongs to the X(+)/potassium ATPases subunit beta family.
Cellular localization	Membrane.

Images



Western blot - Anti-ATP1B1 antibody [464.8] (ab8344)

Anti-ATP1B1 antibody [464.8] (ab8344) at 1/500 dilution + Human kidney tissue lysate - total protein (ab30203) at 20 µg

Secondary

Granzyme B overexpression 293T lysate (whole cell) (ab94040) at 1/10000 dilution

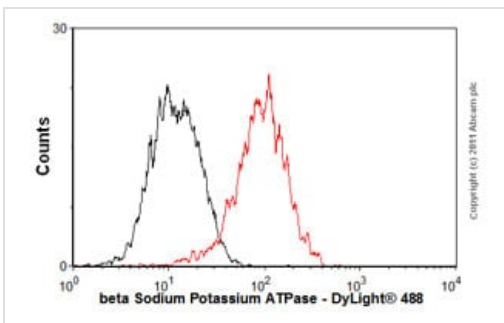
Developed using the ECL technique.

Performed under reducing conditions.

Predicted band size: 35 kDa

Additional bands at: 45 kDa. We are unsure as to the identity of these extra bands.

Exposure time: 4 minutes



Flow Cytometry - Anti-ATP1B1 antibody [464.8] (ab8344)

Overlay histogram showing HepG2 cells stained with ab8344 (red line). The cells were fixed with 80% methanol (5 min) and then permeabilized with 0.1% PBS-Tween for 20 min. The cells were then incubated in 1x PBS / 10% normal goat serum / 0.3M glycine to block non-specific protein-protein interactions followed by the antibody (ab8344, 1/100 dilution) for 30 min at 22°C. The secondary antibody used was DyLight® 488 goat anti-mouse IgG (H+L) (ab96879) at 1/500 dilution for 30 min at 22°C. Isotype control antibody (black line) was mouse IgG2a [CIGG2A] (ab91361, 1µg/1x10⁶ cells) used under the same conditions. Acquisition of >5,000 events was performed.

Please note: All products are "FOR RESEARCH USE ONLY. NOT FOR USE IN DIAGNOSTIC PROCEDURES"

Our Abpromise to you: Quality guaranteed and expert technical support

- Replacement or refund for products not performing as stated on the datasheet
- Valid for 12 months from date of delivery
- Response to your inquiry within 24 hours
- We provide support in Chinese, English, French, German, Japanese and Spanish
- Extensive multi-media technical resources to help you
- We investigate all quality concerns to ensure our products perform to the highest standards

If the product does not perform as described on this datasheet, we will offer a refund or replacement. For full details of the Abpromise, please visit <https://www.abcam.com/abpromise> or contact our technical team.

Terms and conditions

- Guarantee only valid for products bought direct from Abcam or one of our authorized distributors