

Product datasheet

Anti-ATP1B2 antibody [EPR15461(B)] - C-terminal ab185207

Recombinant RabMAb

1 References 4 Images

Overview

Product name	Anti-ATP1B2 antibody [EPR15461(B)] - C-terminal
Description	Rabbit monoclonal [EPR15461(B)] to ATP1B2 - C-terminal
Host species	Rabbit
Tested applications	Suitable for: IP, WB
Species reactivity	Reacts with: Mouse, Rat, Human
Immunogen	within Human ATP1B2 aa 250 to the C-terminus. The exact sequence is proprietary. Database link: P14415 (Peptide available as ab205972)
Positive control	Y79 and Human cerebellum lysates.
General notes	

This product was previously labelled as ATPase Na⁺/ K⁺ beta 2

This product is a recombinant monoclonal antibody, which offers several advantages including:

- High batch-to-batch consistency and reproducibility
- Improved sensitivity and specificity
- Long-term security of supply
- Animal-free production

For more information [see here](#).

Our RabMAb[®] technology is a patented hybridoma-based technology for making rabbit monoclonal antibodies. For details on our patents, please refer to [RabMAb[®] patents](#).

Reproducibility is key to advancing scientific discovery and accelerating scientists' next breakthrough.

Abcam is leading the way with our range of recombinant antibodies, knockout-validated antibodies and knockout cell lines, all of which support improved reproducibility.

We are also planning to innovate the way in which we present recommended applications and species on our product datasheets, so that only applications & species that have been tested in our own labs, our suppliers or by selected trusted collaborators are covered by our Abpromise[™]

guarantee.

In preparation for this, we have started to update the applications & species that this product is Abpromise guaranteed for.

We are also updating the applications & species that this product has been “predicted to work with,” however this information is not covered by our Abpromise guarantee.

Applications & species from publications and Abreviews that have not been tested in our own labs or in those of our suppliers are not covered by the Abpromise guarantee.

Please check that this product meets your needs before purchasing. If you have any questions, special requirements or concerns, please send us an inquiry and/or contact our Support team ahead of purchase. Recommended alternatives for this product can be found below, as well as customer reviews and Q&As.

Properties

Form	Liquid
Storage instructions	Shipped at 4°C. Store at +4°C short term (1-2 weeks). Upon delivery aliquot. Store at -20°C long term. Avoid freeze / thaw cycle.
Storage buffer	pH: 7.2 Preservative: 0.01% Sodium azide Constituents: 59% PBS, 40% Glycerol, 0.05% BSA
Purity	Protein A purified
Clonality	Monoclonal
Clone number	EPR15461(B)
Isotype	IgG

Applications

Our [Abpromise guarantee](#) covers the use of **ab185207** in the following tested applications.

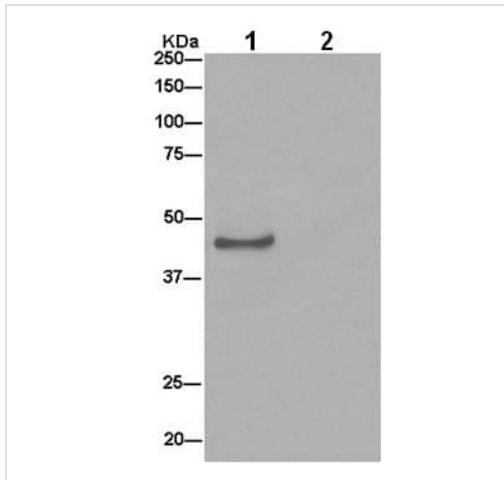
The application notes include recommended starting dilutions; optimal dilutions/concentrations should be determined by the end user.

Application	Abreviews	Notes
IP		1/50 - 1/80.
WB		1/10000 - 1/50000. Detects a band of approximately 45-50 kDa (predicted molecular weight: 33 kDa).

Target

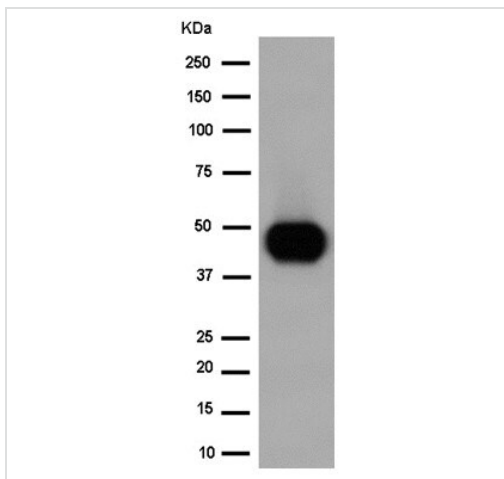
Function	This is the non-catalytic component of the active enzyme, which catalyzes the hydrolysis of ATP coupled with the exchange of Na(+) and K(+) ions across the plasma membrane. The exact function of the beta-2 subunit is not known.
Sequence similarities	Belongs to the X(+)/potassium ATPases subunit beta family.
Cellular localization	Membrane.

Images



Immunoprecipitation - Anti-ATP1B2 antibody
[EPR15461(B)] - C-terminal (ab185207)

Western blot analysis of ATP1B2 in immunoprecipitation pellets from Human Y79 lysate. Lane 1 ab185207 used at 1/50 dilution. Lane 2 PBS negative control Secondary antibody Anti-Rabbit IgG (HRP), specific to the non-reduced form of IgG at 1/1500.



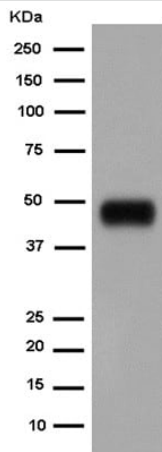
Western blot - Anti-ATP1B2 antibody
[EPR15461(B)] - C-terminal (ab185207)

Anti-ATP1B2 antibody [EPR15461(B)] - C-terminal (ab185207) at 1/20000 dilution + Human cerebellum lysate at 10 µg

Secondary

Anti-Rabbit IgG (HRP), specific to the non-reduced form of IgG at 1/1000 dilution

Predicted band size: 33 kDa



Western blot - Anti-ATP1B2 antibody
[EPR15461(B)] - C-terminal (ab185207)

Anti-ATP1B2 antibody [EPR15461(B)] - C-terminal (ab185207) at
1/20000 dilution + Y79 lysate at 20 µg

Secondary

Goat Anti-Rabbit IgG, (H+L), Peroxidase conjugated at 1/1000
dilution

Predicted band size: 33 kDa

Why choose a
recombinant antibody?

 Research with confidence Consistent and reproducible results	 Long-term and scalable supply Recombinant technology
 Success from the first experiment Confirmed specificity	 Ethical standards compliant Animal-free production

Anti-ATP1B2 antibody [EPR15461(B)] - C-terminal
(ab185207)

Please note: All products are "FOR RESEARCH USE ONLY. NOT FOR USE IN DIAGNOSTIC PROCEDURES"

Our Abpromise to you: Quality guaranteed and expert technical support

- Replacement or refund for products not performing as stated on the datasheet
- Valid for 12 months from date of delivery
- Response to your inquiry within 24 hours

- We provide support in Chinese, English, French, German, Japanese and Spanish
- Extensive multi-media technical resources to help you
- We investigate all quality concerns to ensure our products perform to the highest standards

If the product does not perform as described on this datasheet, we will offer a refund or replacement. For full details of the Abpromise, please visit <https://www.abcam.com/abpromise> or contact our technical team.

Terms and conditions

- Guarantee only valid for products bought direct from Abcam or one of our authorized distributors