




Product datasheet

Anti-ATP6AP1/ATP6S1 antibody ab176609

1 References 2 Images

Overview

Product name	Anti-ATP6AP1/ATP6S1 antibody
Description	Rabbit polyclonal to ATP6AP1/ATP6S1
Host species	Rabbit
Tested applications	Suitable for: WB, IHC-P
Species reactivity	Reacts with: Human Predicted to work with: Mouse, Rat 
Immunogen	Recombinant fragment corresponding to Human ATP6AP1/ATP6S1 aa 44-235. Sequence: QVPLVLW SDRDLWAPA ADTHEGHITS DLQLSTYLDP ALELGPRNVL LFLQDKLSIE DFTAYGGVFG NKQDSAFSNL ENALDLAPSS LVLPAVDWYA VSTLTTYLQE KLGASPLHVD LATLRELKLN ASLPALLLIR LPYTASSGLM APREVLTGND EVIGQVLSTL KSEDVPYTAA LTAVRPSRVA RDVAV Database link: Q15904  Run BLAST with  Run BLAST with
Positive control	Fetal kidney lysate, human brain tissue
General notes	The Life Science industry has been in the grips of a reproducibility crisis for a number of years. Abcam is leading the way in addressing this with our range of recombinant monoclonal antibodies and knockout edited cell lines for gold-standard validation. Please check that this product meets your needs before purchasing. If you have any questions, special requirements or concerns, please send us an inquiry and/or contact our Support team ahead of purchase. Recommended alternatives for this product can be found below, along with publications, customer reviews and Q&As

Properties

Form	Lyophilized:200 ul distilled water
Storage instructions	Shipped at 4°C. Store at +4°C short term (1-2 weeks). Upon delivery aliquot. Store at -20°C long term. Avoid freeze / thaw cycle.
Storage buffer	pH: 7.20

	Preservative: 0.02% Sodium azide Constituents: 98% PBS, 1% BSA
Purity	Immunogen affinity purified
Clonality	Polyclonal
Isotype	IgG

Applications

The Abpromise guarantee Our [Abpromise guarantee](#) covers the use of ab176609 in the following tested applications. The application notes include recommended starting dilutions; optimal dilutions/concentrations should be determined by the end user.

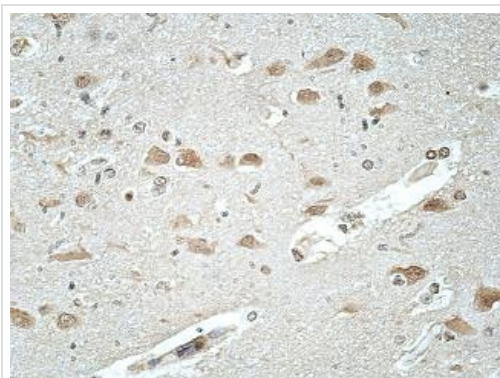
Application	Abreviews	Notes
WB		1/200 - 1/1000. Predicted molecular weight: 52 kDa.
IHC-P		1/100 - 1/500.

Target

Relevance ATP6AP1 is a component of vacuolar ATPase (V-ATPase), a multisubunit enzyme, which is responsible for acidifying a variety of intracellular compartments in eukaryotic cells. V-ATPase dependent organelle acidification is necessary for intracellular processes such as receptor-mediated endocytosis, protein sorting and zymogen activation.

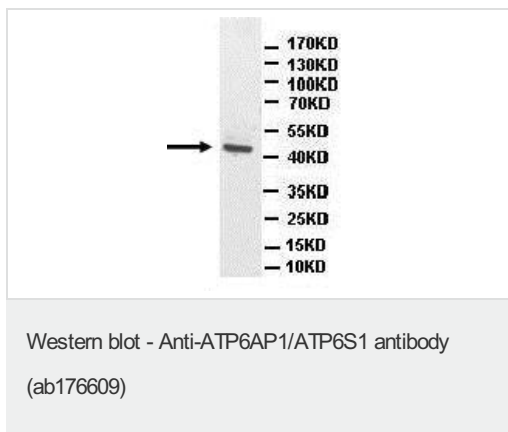
Cellular localization Vacuole membrane. Single-pass membrane protein.

Images



Immunohistochemical staining of formalin-fixed paraffin-embedded Human brain tissue labeling ATP6AP1/ATP6S1 with ab176609 at 1/100 dilution showing membrane staining.

Immunohistochemistry (Formalin/PFA-fixed paraffin-embedded sections) - Anti-ATP6AP1/ATP6S1 antibody (ab176609)



Anti-ATP6AP1/ATP6S1 antibody (ab176609) at 1/500 dilution +
Fetal kidney lysate

Predicted band size: 52 kDa

Please note: All products are "FOR RESEARCH USE ONLY. NOT FOR USE IN DIAGNOSTIC PROCEDURES"

Our Abpromise to you: Quality guaranteed and expert technical support

- Replacement or refund for products not performing as stated on the datasheet
- Valid for 12 months from date of delivery
- Response to your inquiry within 24 hours
- We provide support in Chinese, English, French, German, Japanese and Spanish
- Extensive multi-media technical resources to help you
- We investigate all quality concerns to ensure our products perform to the highest standards

If the product does not perform as described on this datasheet, we will offer a refund or replacement. For full details of the Abpromise, please visit <https://www.abcam.com/abpromise> or contact our technical team.

Terms and conditions

- Guarantee only valid for products bought direct from Abcam or one of our authorized distributors