

Product datasheet

Anti-ATP6V1A antibody [8B1F3] ab113745

1 References 1 Image

Overview

<b>Product name</b>	Anti-ATP6V1A antibody [8B1F3]
<b>Description</b>	Mouse monoclonal [8B1F3] to ATP6V1A
<b>Host species</b>	Mouse
<b>Tested applications</b>	<b>Suitable for:</b> WB, ICC/IF
<b>Species reactivity</b>	<b>Reacts with:</b> Saccharomyces cerevisiae
<b>Immunogen</b>	Full length native protein (purified)
<b>General notes</b>	<p>This antibody clone is manufactured by Abcam.</p> <p>Product was previously marketed under the MitoSciences sub-brand.</p> <p>If you require this antibody in a particular buffer formulation or a particular conjugate for your experiments, please contact <a href="mailto:orders@abcam.com">orders@abcam.com</a> or you can find further information <a href="#">here</a>.</p>

Properties

<b>Form</b>	Liquid
<b>Storage instructions</b>	Shipped at 4°C. Store at +4°C.
<b>Storage buffer</b>	Preservative: 0.02% Sodium azide Constituent: HEPES buffered saline
<b>Purity</b>	Immunogen affinity purified
<b>Purification notes</b>	Near homogeneity. The antibody was produced in vitro using hybridomas grown in serum-free medium, and then purified by chemical fractionation.
<b>Clonality</b>	Monoclonal
<b>Clone number</b>	8B1F3
<b>Isotype</b>	IgG2a
<b>Light chain type</b>	kappa

Applications

Our [Abpromise guarantee](#) covers the use of **ab113745** in the following tested applications.

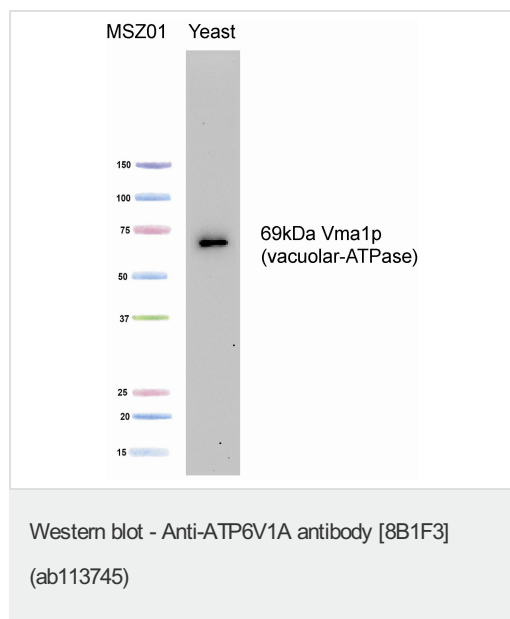
The application notes include recommended starting dilutions; optimal dilutions/concentrations should be determined by the end user.

Application	Abreviews	Notes
WB		Use a concentration of 0.1 - 1 µg/ml. Detects a band of approximately 69 kDa (predicted molecular weight: 69 kDa).
ICC/IF		Use a concentration of 20 µg/ml. heat induced antigen retrieval recommended

## Target

<b>Function</b>	Catalytic subunit of the peripheral V1 complex of vacuolar ATPase. V-ATPase vacuolar ATPase is responsible for acidifying a variety of intracellular compartments in eukaryotic cells.
<b>Tissue specificity</b>	Present in all tissues analyzed.
<b>Sequence similarities</b>	Belongs to the ATPase alpha/beta chains family.

## Images



Anti-ATP6V1A antibody [8B1F3] (ab113745) at 1 µg/ml + Yeast Whole Cell at 15 µg

**Predicted band size:** 69 kDa

**Please note:** All products are "FOR RESEARCH USE ONLY AND ARE NOT INTENDED FOR DIAGNOSTIC OR THERAPEUTIC USE"

## Our Abpromise to you: Quality guaranteed and expert technical support

- Replacement or refund for products not performing as stated on the datasheet
- Valid for 12 months from date of delivery
- Response to your inquiry within 24 hours
- We provide support in Chinese, English, French, German, Japanese and Spanish
- Extensive multi-media technical resources to help you
- We investigate all quality concerns to ensure our products perform to the highest standards

If the product does not perform as described on this datasheet, we will offer a refund or replacement. For full details of the Abpromise,

please visit <https://www.abcam.com/abpromise> or contact our technical team.

## **Terms and conditions**

---

- Guarantee only valid for products bought direct from Abcam or one of our authorized distributors