


Product datasheet

Anti-ATPAF2 antibody ab74235

1 Image

Overview

Product name	Anti-ATPAF2 antibody
Description	Rabbit polyclonal to ATPAF2
Host species	Rabbit
Specificity	This antibody detects endogenous levels of total ATPAF2 protein.
Tested applications	Suitable for: ELISA, WB
Species reactivity	Reacts with: Human Predicted to work with: Mouse 
Immunogen	A synthesized peptide derived from the internal region of human ATPAF2.
Positive control	Extracts from Jurkat cells.

Properties

Form	Liquid
Storage instructions	Shipped at 4°C. Upon delivery aliquot and store at -20°C. Avoid freeze / thaw cycles.
Storage buffer	pH: 7.40 Preservative: 0.02% Sodium azide Constituents: 50% Glycerol, 0.87% Sodium chloride, PBS
Purity	Immunogen affinity purified
Clonality	Polyclonal
Isotype	IgG

Applications

Our [Abpromise guarantee](#) covers the use of **ab74235** in the following tested applications.

The application notes include recommended starting dilutions; optimal dilutions/concentrations should be determined by the end user.

Application	Abreviews	Notes
ELISA		1/40000.

Application	Abreviews	Notes
WB		1/500 - 1/1000. Detects a band of approximately 33 kDa (predicted molecular weight: 33 kDa).

Target

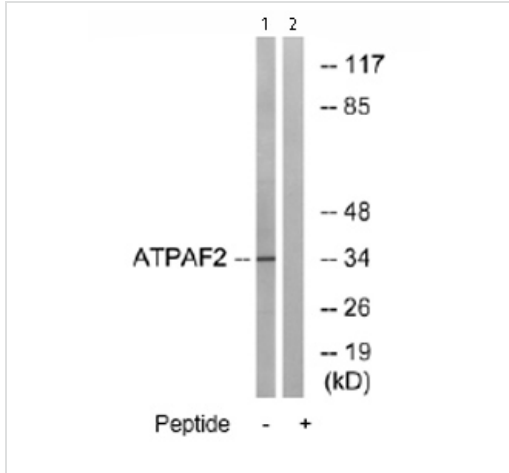
Relevance

ATPAF2 belongs to the ATP12 family. It may play a role in the assembly of the F1 component of the mitochondrial ATP synthase (ATPase). Defects in ATPAF2 are the cause of complex V mitochondrial respiratory chain ATPAF2 subunit deficiency (ATPAF2 deficiency) [MIM:604273]; also called ATP synthase deficiency or ATPase deficiency. ATPAF2 deficiency seems to be an early presenting disease in which lactic acidosis, dysmorphic features, and methyl glutaconic aciduria can be major clues in the diagnosis. Dysmorphic features include a large mouth, prominent nasal bridge, micrognathia, rocker-bottom feet and flexion contractures of the limbs associated with camptodactyly. Patients are hypertonic and have an enlarged liver, hypoplastic kidneys and elevated lactate levels in urine, plasma and cerebro spinal fluid (CSF).

Cellular localization

Mitochondrion

Images



All lanes : Anti-ATPAF2 antibody (ab74235) at 1/500 dilution

Lane 1 : Extracts from Jurkat cells

Lane 2 : Extracts from Jurkat cells plus 5µg immunizing peptide

Lysates/proteins at 5 µg per lane.

Predicted band size: 33 kDa

Observed band size: 33 kDa

Western blot - Anti-ATPAF2 antibody (ab74235)

Please note: All products are "FOR RESEARCH USE ONLY. NOT FOR USE IN DIAGNOSTIC PROCEDURES"

Our Abpromise to you: Quality guaranteed and expert technical support

- Replacement or refund for products not performing as stated on the datasheet
- Valid for 12 months from date of delivery
- Response to your inquiry within 24 hours
- We provide support in Chinese, English, French, German, Japanese and Spanish
- Extensive multi-media technical resources to help you

- We investigate all quality concerns to ensure our products perform to the highest standards

If the product does not perform as described on this datasheet, we will offer a refund or replacement. For full details of the Abpromise, please visit <https://www.abcam.com/abpromise> or contact our technical team.

Terms and conditions

- Guarantee only valid for products bought direct from Abcam or one of our authorized distributors