



Product datasheet

Anti-AUTS2 antibody ab224035

5 Images

Overview

Product name	Anti-AUTS2 antibody
Description	Rabbit polyclonal to AUTS2
Host species	Rabbit
Tested applications	Suitable for: ICC/IF, IHC-P
Species reactivity	Reacts with: Human
Immunogen	<p>Recombinant fragment corresponding to Human AUTS2 aa 1009-1114. Sequence:</p> <p>NSSSSVHPGPLASMPMTVGVTGIHPMNSISSLDRTRM MTPFMGISPLPGG ERFPYPSFHWDPIRDPLRDPYRELDIHRRDPLGRDFLL RNDPLHRLSTPR LYEADR</p> <p>Database link: Q8WXX7</p> <p style="text-align: right;">  Run BLAST with  Run BLAST with </p>
Positive control	IHC: Human cerebral cortex, skin and prostate tissue. ICC/IF: A431 cells.

Properties

Form	Liquid
Storage instructions	Shipped at 4°C. Store at +4°C short term (1-2 weeks). Upon delivery aliquot. Store at -20°C long term. Avoid freeze / thaw cycle.
Storage buffer	<p>pH: 7.2 Preservative: 0.02% Sodium azide Constituents: 40% Glycerol, PBS</p>
Purity	Immunogen affinity purified
Clonality	Polyclonal
Isotype	IgG

Applications

Our [Abpromise guarantee](#) covers the use of **ab224035** in the following tested applications.

The application notes include recommended starting dilutions; optimal dilutions/concentrations should be determined by the end user.

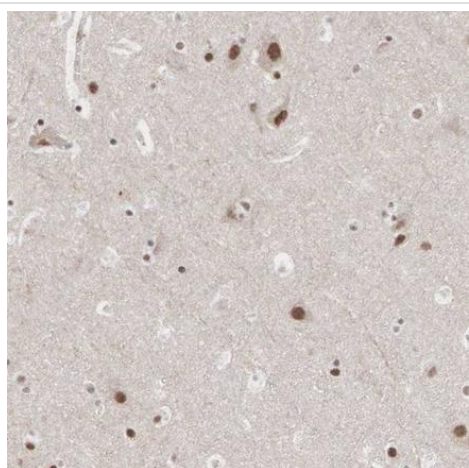
Application	Abreviews	Notes
ICC/IF		Use a concentration of 1 - 4 µg/ml. Fixation/Permeabilization: PFA/Triton X-100.
IHC-P		1/200 - 1/500. Perform heat mediated antigen retrieval with citrate buffer pH 6 before commencing with IHC staining protocol.

Target

Tissue specificity Strongly expressed in brain, skeletal muscle and kidney. Also expressed in placenta, lung and leukocytes.

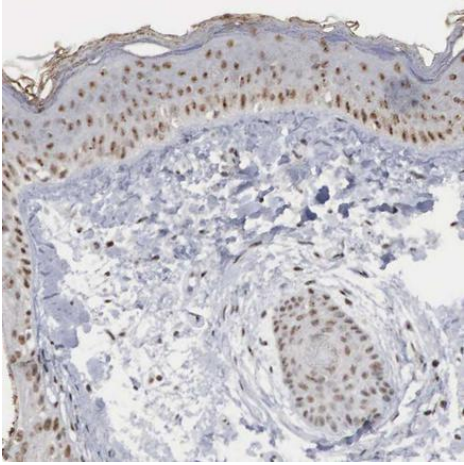
Sequence similarities Belongs to the AUTS2 family.

Images



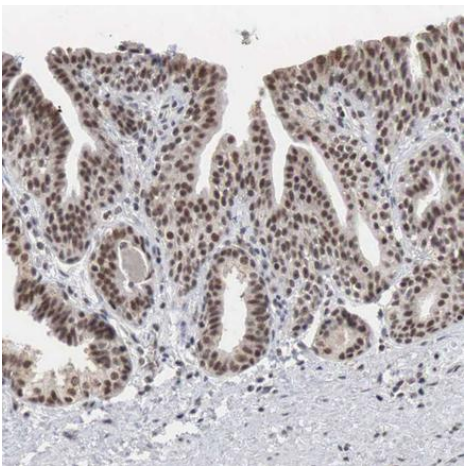
Paraffin-embedded human cerebral tissue stained for AUTS2 using ab224035 at 1/200 dilution in immunohistochemical analysis.

Immunohistochemistry (Formalin/PFA-fixed paraffin-embedded sections) - Anti-AUTS2 antibody (ab224035)



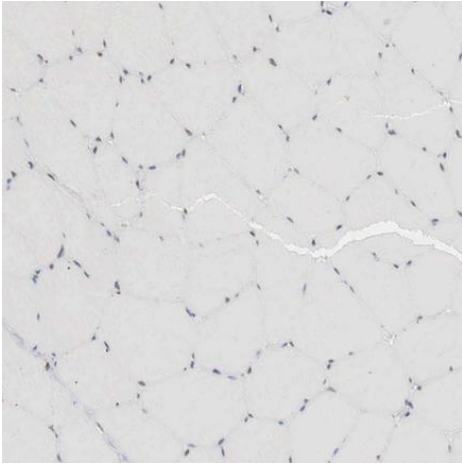
Paraffin-embedded human skin tissue stained for AUTS2 using ab224035 at 1/200 dilution in immunohistochemical analysis.

Immunohistochemistry (Formalin/PFA-fixed paraffin-embedded sections) - Anti-AUTS2 antibody (ab224035)



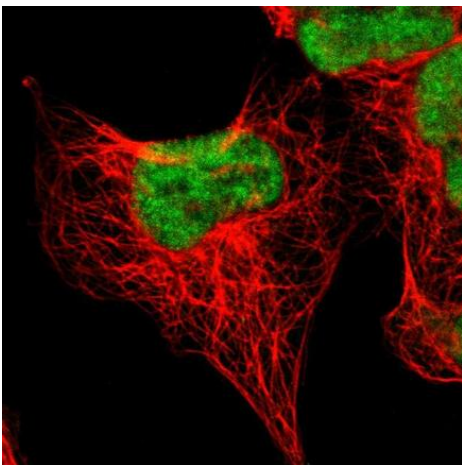
Paraffin-embedded human prostate tissue stained for AUTS2 using ab224035 at 1/200 dilution in immunohistochemical analysis.

Immunohistochemistry (Formalin/PFA-fixed paraffin-embedded sections) - Anti-AUTS2 antibody (ab224035)



Immunohistochemistry (Formalin/PFA-fixed paraffin-embedded sections) - Anti-AUTS2 antibody (ab224035)

Paraffin-embedded human skeletal muscle tissue stained for AUTS2 using ab224035 at 1/200 dilution in immunohistochemical analysis (negative control).



Immunocytochemistry/ Immunofluorescence - Anti-AUTS2 antibody (ab224035)

PFA-fixed, Triton X-100 permeabilized A431 (human epidermoid carcinoma cell line) cells stained for AUTS2 (green) using ab224035 at 4 µg/ml in ICC/IF.

Please note: All products are "FOR RESEARCH USE ONLY. NOT FOR USE IN DIAGNOSTIC PROCEDURES"

Our Abpromise to you: Quality guaranteed and expert technical support

- Replacement or refund for products not performing as stated on the datasheet
- Valid for 12 months from date of delivery
- Response to your inquiry within 24 hours

- We provide support in Chinese, English, French, German, Japanese and Spanish
- Extensive multi-media technical resources to help you
- We investigate all quality concerns to ensure our products perform to the highest standards

If the product does not perform as described on this datasheet, we will offer a refund or replacement. For full details of the Abpromise, please visit <https://www.abcam.com/abpromise> or contact our technical team.

Terms and conditions

- Guarantee only valid for products bought direct from Abcam or one of our authorized distributors