

## Product datasheet

# Anti-Axl antibody ab227871

★★★★☆ 2 Abreviews 2 References 6 Images

### Overview

---

<b>Product name</b>	Anti-Axl antibody
<b>Description</b>	Rabbit polyclonal to Axl
<b>Host species</b>	Rabbit
<b>Tested applications</b>	<b>Suitable for:</b> WB, IHC-P
<b>Species reactivity</b>	<b>Reacts with:</b> Mouse, Human
<b>Immunogen</b>	Recombinant fragment within Human Axl (internal sequence). The exact sequence is proprietary. Database link: <a href="#">P30530</a>
<b>Positive control</b>	WB: HEK-293 transfected with Axl whole cell lysate; A549, NCI-H1299 and HCT 116 whole cell extracts; Mouse muscle tissue extract. IHC-P: Human non-small cell lung carcinoma, colon carcinoma and lung cancer tissues.
<b>General notes</b>	<p>Reproducibility is key to advancing scientific discovery and accelerating scientists' next breakthrough.</p> <p>Abcam is leading the way with our range of recombinant antibodies, knockout-validated antibodies and knockout cell lines, all of which support improved reproducibility.</p> <p>We are also planning to innovate the way in which we present recommended applications and species on our product datasheets, so that only applications &amp; species that have been tested in our own labs, our suppliers or by selected trusted collaborators are covered by our Abpromise™ guarantee.</p> <p>In preparation for this, we have started to update the applications &amp; species that this product is Abpromise guaranteed for.</p> <p>We are also updating the applications &amp; species that this product has been "predicted to work with," however this information is not covered by our Abpromise guarantee.</p> <p>Applications &amp; species from publications and Abreviews that have not been tested in our own labs or in those of our suppliers are not covered by the Abpromise guarantee.</p> <p>Please check that this product meets your needs before purchasing. If you have any questions, special requirements or concerns, please send us an inquiry and/or contact our Support team ahead of purchase. Recommended alternatives for this product can be found below, as well as customer reviews and Q&amp;As.</p>

### Properties

---

<b>Form</b>	Liquid
<b>Storage instructions</b>	Shipped at 4°C. Store at +4°C short term (1-2 weeks). Upon delivery aliquot. Store at -20°C long term. Avoid freeze / thaw cycle.
<b>Storage buffer</b>	pH: 7.00 Preservative: 0.025% Proclin 300 Constituents: 79% PBS, 20% Glycerol (glycerin, glycerine)
<b>Purity</b>	Immunogen affinity purified
<b>Clonality</b>	Polyclonal
<b>Isotype</b>	IgG

## Applications

Our [Abpromise guarantee](#) covers the use of **ab227871** in the following tested applications.

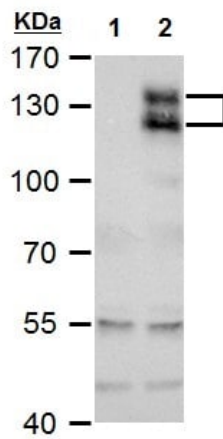
The application notes include recommended starting dilutions; optimal dilutions/concentrations should be determined by the end user.

Application	Abreviews	Notes
WB		1/500 - 1/10000. Predicted molecular weight: 98 kDa.
IHC-P	★★★★☆	1/100 - 1/1000.

## Target

<b>Function</b>	May function as a signal transducer between specific cell types of mesodermal origin. In case of filovirus infection, seems to function as a cell entry factor.
<b>Tissue specificity</b>	Highly expressed in metastatic colon tumors. Expressed in primary colon tumors. Weakly expressed in normal colon tissue.
<b>Sequence similarities</b>	Belongs to the protein kinase superfamily. Tyr protein kinase family. AXL/UFO subfamily. Contains 2 fibronectin type-III domains. Contains 2 Ig-like C2-type (immunoglobulin-like) domains. Contains 1 protein kinase domain.
<b>Cellular localization</b>	Membrane.

## Images



Western blot - Anti-Axl antibody (ab227871)

**All lanes :** Anti-Axl antibody (ab227871) at 1/5000 dilution

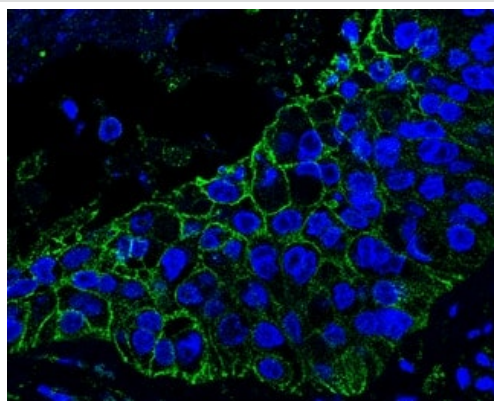
**Lane 1 :** HEK-293T (human epithelial cell line from embryonic kidney transformed with large T antigen) whole cell extract

**Lane 2 :** HEK-293T (human epithelial cell line from embryonic kidney transformed with large T antigen) transfected with Axl, whole cell lysate

Lysates/proteins at 30 µg per lane.

**Predicted band size:** 98 kDa

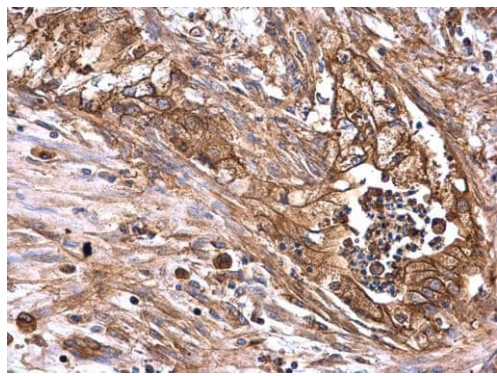
7.5% SDS-PAGE gel.



Immunohistochemistry (Formalin/PFA-fixed paraffin-embedded sections) - Anti-Axl antibody (ab227871)

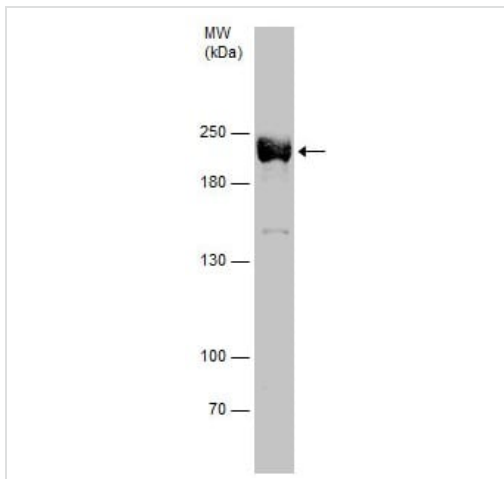
Paraffin-embedded human lung cancer tissue stained for Axl using ab227871 at 1/200 dilution in immunohistochemical analysis. The signal was developed using goat anti-rabbit IgG antibody (Dylight®488) (green).

Nuclear counterstain: Hoechst 33342 (blue).



Immunohistochemistry (Formalin/PFA-fixed paraffin-embedded sections) - Anti-Axl antibody (ab227871)

Paraffin-embedded human colon carcinoma tissue stained for Axl using ab227871 at 1/500 dilution in immunohistochemical analysis.

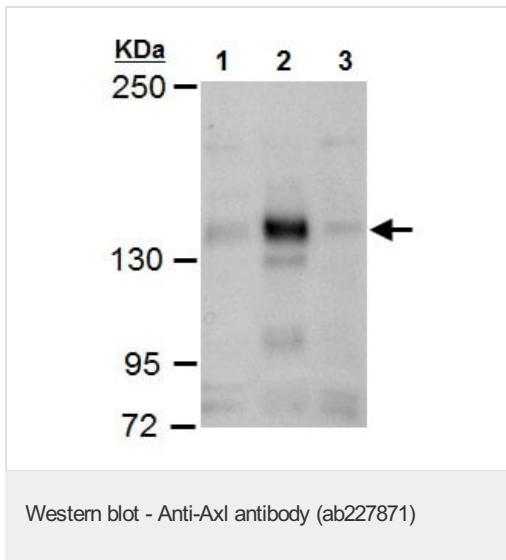


Western blot - Anti-Axl antibody (ab227871)

Anti-Axl antibody (ab227871) at 1/500 dilution + Mouse muscle tissue extract at 50  $\mu$ g

**Predicted band size:** 98 kDa

5% SDS-PAGE gel.



**All lanes :** Anti-Axl antibody (ab227871) at 1/500 dilution

**Lane 1 :** A549 (human lung carcinoma cell line) whole cell extract

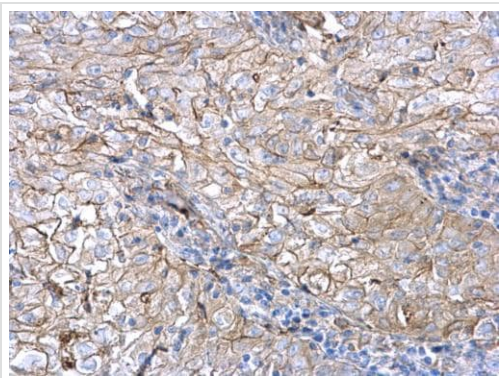
**Lane 2 :** NCI-H1299 (human lung carcinoma cell line) whole cell extract

**Lane 3 :** HCT 116 (human colorectal carcinoma cell line) whole cell extract

Lysates/proteins at 30 µg per lane.

**Predicted band size:** 98 kDa

5% SDS-PAGE gel.



Paraffin-embedded human non-small cell lung carcinoma tissue stained for Axl using ab227871 at 1/500 dilution in immunohistochemical analysis.

Immunohistochemistry (Formalin/PFA-fixed paraffin-embedded sections) - Anti-Axl antibody (ab227871)

**Please note:** All products are "FOR RESEARCH USE ONLY. NOT FOR USE IN DIAGNOSTIC PROCEDURES"

### Our Abpromise to you: Quality guaranteed and expert technical support

- Replacement or refund for products not performing as stated on the datasheet
- Valid for 12 months from date of delivery
- Response to your inquiry within 24 hours
- We provide support in Chinese, English, French, German, Japanese and Spanish
- Extensive multi-media technical resources to help you
- We investigate all quality concerns to ensure our products perform to the highest standards

If the product does not perform as described on this datasheet, we will offer a refund or replacement. For full details of the Abpromise, please visit <https://www.abcam.com/abpromise> or contact our technical team.

## Terms and conditions

---

- Guarantee only valid for products bought direct from Abcam or one of our authorized distributors