


Product datasheet

Anti-B MyB (phospho S577 + S581) antibody ab61000

1 References 1 Image

Overview

Product name	Anti-B MyB (phospho S577 + S581) antibody
Description	Rabbit polyclonal to B MyB (phospho S577 + S581)
Host species	Rabbit
Tested applications	Suitable for: WB
Species reactivity	Reacts with: Human Predicted to work with: Rat 
Immunogen	Synthetic peptide corresponding to Human B MyB (phospho S577 + S581). Database link: P10244

Positive control

[Purchase matching WB positive control:
Recombinant Human B MyB protein >](#)

General notes

The Life Science industry has been in the grips of a reproducibility crisis for a number of years. Abcam is leading the way in addressing this with our range of recombinant monoclonal antibodies and knockout edited cell lines for gold-standard validation. Please check that this product meets your needs before purchasing.

If you have any questions, special requirements or concerns, please send us an inquiry and/or contact our Support team ahead of purchase. Recommended alternatives for this product can be found below, along with publications, customer reviews and Q&As

Properties

Form	Liquid
Storage instructions	Shipped at 4°C. Store at -20°C. Stable for 12 months at -20°C.
Storage buffer	pH: 7.40 Preservative: 0.02% Sodium azide Constituents: PBS, 50% Glycerol (glycerin, glycerine), 0.87% Sodium chloride Without Mg ²⁺ and Ca ²⁺
Purity	Immunogen affinity purified
Purification notes	Affinity purified from rabbit antiserum by affinity-chromatography using epitope-specific phosphopeptide. The antibody against non-phosphopeptide was removed by chromatography

using non-phosphopeptide corresponding to the phosphorylation site.

Clonality	Polyclonal
Isotype	IgG

Applications

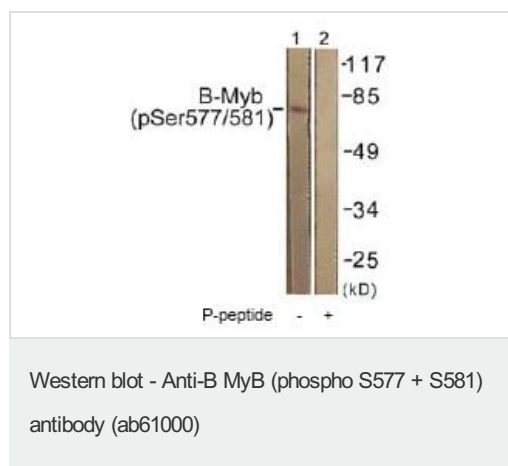
The Abpromise guarantee Our [Abpromise guarantee](#) covers the use of ab61000 in the following tested applications. The application notes include recommended starting dilutions; optimal dilutions/concentrations should be determined by the end user.

Application	Abreviews	Notes
WB		1/500 - 1/1000. Detects a band of approximately 79 kDa (predicted molecular weight: 79 kDa).

Target

Function	Transcription factor involved in the regulation of cell survival, proliferation, and differentiation. Transactivates the expression of the CLU gene.
Sequence similarities	Contains 3 HTH myb-type DNA-binding domains.
Post-translational modifications	Phosphorylated by cyclin A/CDK2 during S-phase. Phosphorylation at Thr-520 is probably involved in transcriptional activity.
Cellular localization	Nucleus.

Images



All lanes : Anti-B MyB (phospho S577 + S581) antibody (ab61000) at 1/500 dilution

Lane 1 : extracts from K562 cells

Lane 2 : extracts from K562 cells with immunizing phosphopeptide

Predicted band size: 79 kDa

Observed band size: 79 kDa

Please note: All products are "FOR RESEARCH USE ONLY. NOT FOR USE IN DIAGNOSTIC PROCEDURES"

Our Abpromise to you: Quality guaranteed and expert technical support

- Replacement or refund for products not performing as stated on the datasheet
- Valid for 12 months from date of delivery

- Response to your inquiry within 24 hours
- We provide support in Chinese, English, French, German, Japanese and Spanish
- Extensive multi-media technical resources to help you
- We investigate all quality concerns to ensure our products perform to the highest standards

If the product does not perform as described on this datasheet, we will offer a refund or replacement. For full details of the Abpromise, please visit <https://www.abcam.com/abpromise> or contact our technical team.

Terms and conditions

- Guarantee only valid for products bought direct from Abcam or one of our authorized distributors