

Product datasheet

Anti-Bad antibody ab90435

★★★★★ 1 Abreviews 21 References 3 Images

Overview

Product name	Anti-Bad antibody
Description	Rabbit polyclonal to Bad
Host species	Rabbit
Specificity	This antibody specifically binds the Bad protein, but does not recognize Bad/Bcl2 heterodimers in Immunoprecipitation assays.
Tested applications	Suitable for: WB, IHC-P
Species reactivity	Reacts with: Mouse, Rat, Sheep, Rabbit, Chicken, Hamster, Cow, Dog, Pig, Drosophila melanogaster, Monkey
Immunogen	Synthetic peptide derived from the sequence of Mouse Bad, conjugated to KLH.
General notes	<p>Reproducibility is key to advancing scientific discovery and accelerating scientists' next breakthrough.</p> <p>Abcam is leading the way with our range of recombinant antibodies, knockout-validated antibodies and knockout cell lines, all of which support improved reproducibility.</p> <p>We are also planning to innovate the way in which we present recommended applications and species on our product datasheets, so that only applications & species that have been tested in our own labs, our suppliers or by selected trusted collaborators are covered by our Abpromise™ guarantee.</p> <p>In preparation for this, we have started to update the applications & species that this product is Abpromise guaranteed for.</p> <p>We are also updating the applications & species that this product has been “predicted to work with,” however this information is not covered by our Abpromise guarantee.</p> <p>Applications & species from publications and Abreviews that have not been tested in our own labs or in those of our suppliers are not covered by the Abpromise guarantee.</p> <p>Please check that this product meets your needs before purchasing. If you have any questions, special requirements or concerns, please send us an inquiry and/or contact our Support team ahead of purchase. Recommended alternatives for this product can be found below, as well as customer reviews and Q&As.</p>

Properties

Form	Liquid
-------------	--------

Storage instructions	Shipped at 4°C. Upon delivery aliquot and store at -20°C. Avoid freeze / thaw cycles.
Storage buffer	pH: 7.20 Preservative: 0.09% Sodium azide Constituents: PBS, 50% Glycerol
Purity	Protein A purified
Clonality	Polyclonal
Isotype	IgG

Applications

Our [Abpromise guarantee](#) covers the use of **ab90435** in the following tested applications.

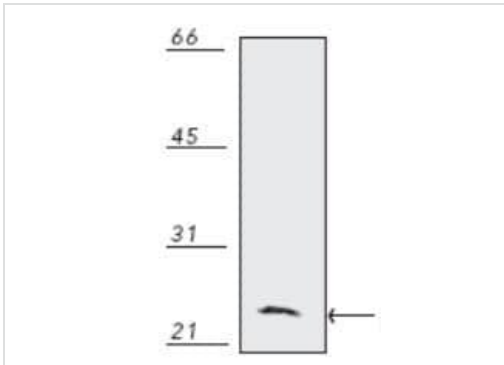
The application notes include recommended starting dilutions; optimal dilutions/concentrations should be determined by the end user.

Application	Abreviews	Notes
WB	★★★★☆	Use a concentration of 1 µg/ml. Predicted molecular weight: 18 kDa.
IHC-P		1/50. Antigen retrieval is not essential but may optimise staining.

Target

Function	Promotes cell death. Successfully competes for the binding to Bcl-X(L), Bcl-2 and Bcl-W, thereby affecting the level of heterodimerization of these proteins with BAX. Can reverse the death repressor activity of Bcl-X(L), but not that of Bcl-2 (By similarity). Appears to act as a link between growth factor receptor signaling and the apoptotic pathways.
Tissue specificity	Expressed in a wide variety of tissues.
Sequence similarities	Belongs to the Bcl-2 family.
Domain	Intact BH3 motif is required by BIK, BID, BAK, BAD and BAX for their pro-apoptotic activity and for their interaction with anti-apoptotic members of the Bcl-2 family.
Post-translational modifications	Phosphorylated on one or more of Ser-75, Ser-99, Ser-118 and Ser-134 in response to survival stimuli, which blocks its pro-apoptotic activity. Phosphorylation on Ser-99 or Ser-75 promotes heterodimerization with 14-3-3 proteins. This interaction then facilitates the phosphorylation at Ser-118, a site within the BH3 motif, leading to the release of Bcl-X(L) and the promotion of cell survival. Ser-99 is the major site of AKT/PKB phosphorylation, Ser-118 the major site of protein kinase A (CAPK) phosphorylation. Ser-75 is phosphorylated by AKT/PKB, protein kinase A and PIM2.
Cellular localization	Mitochondrion outer membrane. Cytoplasm. Upon phosphorylation, locates to the cytoplasm.

Images

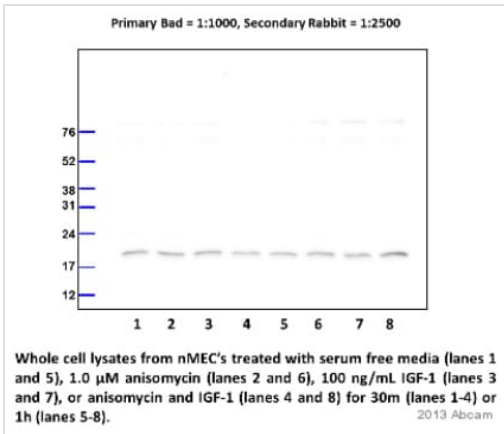


Western blot - Anti-Bad antibody (ab90435)

Anti-Bad antibody (ab90435) at 1 µg/ml + Mouse Raw 264 cell lysate

Developed using the ECL technique.

Predicted band size: 18 kDa



Western blot - Anti-Bad antibody (ab90435)

This image is courtesy of an anonymous Abreview

All lanes : Anti-Bad antibody (ab90435) at 1/1000 dilution

Lanes 1 & 5 : Cow normal mammary epithelial cells (nMEC) treated with serum free media

Lanes 2 & 6 : Cow normal mammary epithelial cells (nMEC) treated with 1.0µM anisomycin

Lanes 3 & 7 : Cow normal mammary epithelial cells (nMEC) treated with 100ng/ml IGF-1

Lanes 4 & 8 : Cow normal mammary epithelial cells (nMEC) treated with anisomycin and IGF-1

Lysates/proteins at 40 µg per lane.

Secondary

All lanes : ECL Anti-Rabbit IgG, Horseradish Peroxidase Linked at 2500 cells

Developed using the ECL technique.

Performed under reducing conditions.

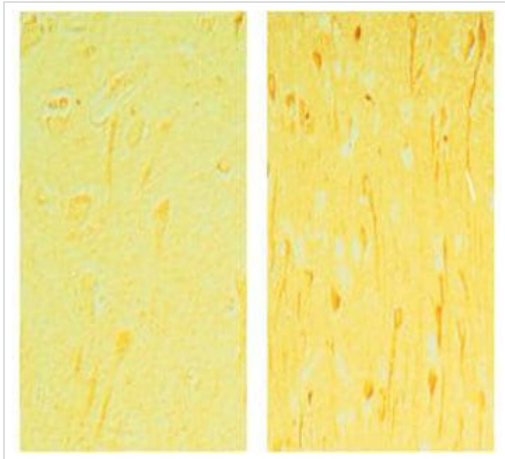
Predicted band size: 18 kDa

Observed band size: 18 kDa

Exposure time: 30 seconds

Treatment for 30 minutes (lanes 1-4) or for 1 hour (lanes 5-8).

12.5% SDS-PAGE. Proteins collected in RIPA Buffer and transferred to PVDF (0.45 μ m).



ab90435, at a 1/50 dilution, staining BAD in the neurons of paraffin embedded Alzheimer diseased brain tissue (right) by Immunohistochemistry. Control brain tissue (left).

Immunohistochemistry (Formalin/PFA-fixed paraffin-embedded sections) - Anti-Bad antibody (ab90435)

Please note: All products are "FOR RESEARCH USE ONLY. NOT FOR USE IN DIAGNOSTIC PROCEDURES"

Our Abpromise to you: Quality guaranteed and expert technical support

- Replacement or refund for products not performing as stated on the datasheet
- Valid for 12 months from date of delivery
- Response to your inquiry within 24 hours
- We provide support in Chinese, English, French, German, Japanese and Spanish
- Extensive multi-media technical resources to help you
- We investigate all quality concerns to ensure our products perform to the highest standards

If the product does not perform as described on this datasheet, we will offer a refund or replacement. For full details of the Abpromise, please visit <https://www.abcam.com/abpromise> or contact our technical team.

Terms and conditions

- Guarantee only valid for products bought direct from Abcam or one of our authorized distributors