

Product datasheet

Anti-BAMBI/NMA antibody [OTI5D5] ab236499

1 Image

Overview

Product name	Anti-BAMBI/NMA antibody [OTI5D5]
Description	Mouse monoclonal [OTI5D5] to BAMBI/NMA
Host species	Mouse
Tested applications	Suitable for: WB
Species reactivity	Reacts with: Human Predicted to work with: Mouse, Rat, Sheep ▲
Immunogen	Recombinant fragment corresponding to Human BAMBI/NMA aa 21-152. Produced in E.coli (NP_036474). Sequence: VLLTKGEIRCDAAHCVATGYMCKSELSACFSRLLD PQNSNSPLTHGCL DSLASTTDICQAKQARNHSGTTIPTLECCHEDMCNYRG LHDVLSPPRGEA SGQGNRYQHDGSRNLITKVQELTSSKELWFRA Database link: Q13145 Run BLAST with Run BLAST with
Positive control	WB: pCMV6-ENTRY BAMBI/NMA cDNA transfected HEK-293T cell lysate.
General notes	Clone OTI5D5 (formerly 5D5). Protein previously labeled as BAMBI.

Properties

Form	Liquid
Storage instructions	Shipped at 4°C. Store at +4°C short term (1-2 weeks). Upon delivery aliquot. Store at -20°C long term. Avoid freeze / thaw cycle.
Storage buffer	pH: 7.30 Preservative: 0.02% Sodium azide Constituents: PBS, 1% BSA, 50% Glycerol
Purity	Affinity purified
Purification notes	Purified from cell culture supernatant.

Clonality	Monoclonal
Clone number	OTI5D5
Isotype	IgG1

Applications

Our [Abpromise guarantee](#) covers the use of **ab236499** in the following tested applications.

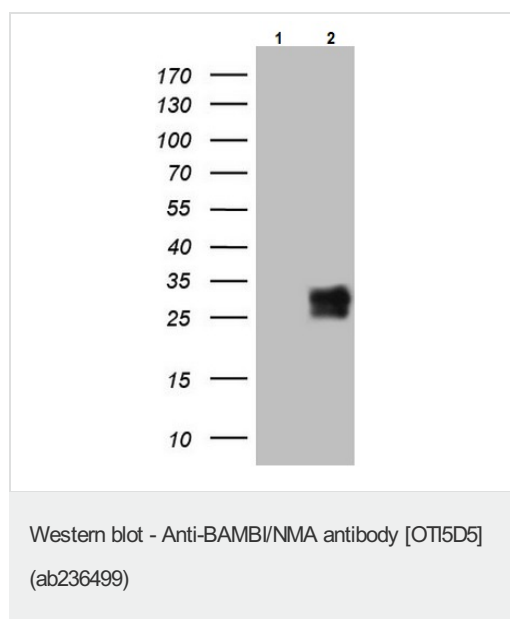
The application notes include recommended starting dilutions; optimal dilutions/concentrations should be determined by the end user.

Application	Abreviews	Notes
WB		1/2000. Predicted molecular weight: 29 kDa.

Target

Function	Negatively regulates TGF-beta signaling.
Tissue specificity	High expression in kidney medulla, placenta and spleen; low in kidney cortex, liver, prostate and gut. Not expressed in normal skin, expression is high in melanocytes and in 3 out of 11 melanoma metastases tested.
Sequence similarities	Belongs to the BAMBI family.
Developmental stage	Expression in poorly metastatic human melanoma cell lines; no expression in highly metastatic human melanoma cell lines.
Cellular localization	Membrane.

Images



All lanes : Anti-BAMBI/NMA antibody [OTI5D5] (ab236499) at 1/2000 dilution

Lane 1 : pCMV6-ENTRY control cDNA transfected HEK-293T (human epithelial cell line from embryonic kidney transformed with large T antigen) cell lysate

Lane 2 : pCMV6-ENTRY BAMBI/NMA cDNA transfected HEK-293T cell lysate

Lysates/proteins at 5 µg per lane.

Predicted band size: 29 kDa

Please note: All products are "FOR RESEARCH USE ONLY. NOT FOR USE IN DIAGNOSTIC PROCEDURES"

Our Abpromise to you: Quality guaranteed and expert technical support

- Replacement or refund for products not performing as stated on the datasheet
- Valid for 12 months from date of delivery
- Response to your inquiry within 24 hours

- We provide support in Chinese, English, French, German, Japanese and Spanish
- Extensive multi-media technical resources to help you
- We investigate all quality concerns to ensure our products perform to the highest standards

If the product does not perform as described on this datasheet, we will offer a refund or replacement. For full details of the Abpromise, please visit <https://www.abcam.com/abpromise> or contact our technical team.

Terms and conditions

- Guarantee only valid for products bought direct from Abcam or one of our authorized distributors