

## Product datasheet

# Anti-BAP31 antibody ab37120

★★★★★ 1 Abreviews 5 References 3 Images

### Overview

---

<b>Product name</b>	Anti-BAP31 antibody
<b>Description</b>	Rabbit polyclonal to BAP31
<b>Host species</b>	Rabbit
<b>Tested applications</b>	<b>Suitable for:</b> IHC-P, WB
<b>Species reactivity</b>	<b>Reacts with:</b> Mouse, Rat, Human
<b>Immunogen</b>	Synthetic peptide corresponding to 17 amino acids near to the C terminus of the human BAP31 protein.

### General notes

Reproducibility is key to advancing scientific discovery and accelerating scientists' next breakthrough.

Abcam is leading the way with our range of recombinant antibodies, knockout-validated antibodies and knockout cell lines, all of which support improved reproducibility.

We are also planning to innovate the way in which we present recommended applications and species on our product datasheets, so that only applications & species that have been tested in our own labs, our suppliers or by selected trusted collaborators are covered by our Abpromise™ guarantee.

In preparation for this, we have started to update the applications & species that this product is Abpromise guaranteed for.

We are also updating the applications & species that this product has been "predicted to work with," however this information is not covered by our Abpromise guarantee.

Applications & species from publications and Abreviews that have not been tested in our own labs or in those of our suppliers are not covered by the Abpromise guarantee.

Please check that this product meets your needs before purchasing. If you have any questions, special requirements or concerns, please send us an inquiry and/or contact our Support team ahead of purchase. Recommended alternatives for this product can be found below, as well as customer reviews and Q&As.

### Properties

---

<b>Form</b>	Liquid
<b>Storage instructions</b>	Shipped at 4°C. Upon delivery aliquot and store at -20°C. Avoid freeze / thaw cycles.
<b>Storage buffer</b>	pH: 7.2

Preservative: 0.02% Sodium azide

Constituent: PBS

<b>Purity</b>	Immunogen affinity purified
<b>Clonality</b>	Polyclonal
<b>Isotype</b>	IgG

## Applications

Our [Abpromise guarantee](#) covers the use of **ab37120** in the following tested applications.

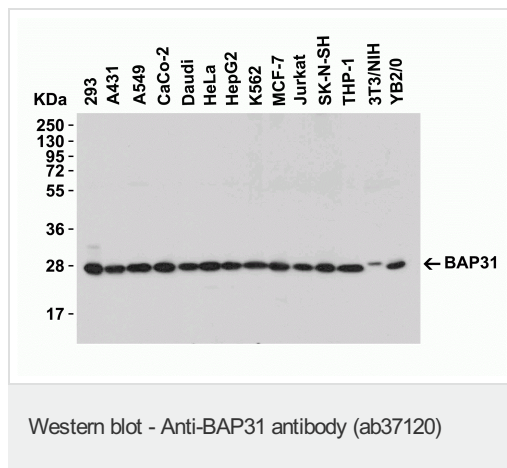
The application notes include recommended starting dilutions; optimal dilutions/concentrations should be determined by the end user.

Application	Abreviews	Notes
IHC-P		Use a concentration of 2 µg/ml.
WB	★★★★☆	Use a concentration of 0.5 - 1 µg/ml. Detects a band of approximately 31 kDa (predicted molecular weight: 28 kDa).

## Target

<b>Function</b>	May play a role in anterograde transport of membrane proteins from the endoplasmic reticulum to the Golgi. May be involved in CASP8-mediated apoptosis.
<b>Tissue specificity</b>	Ubiquitous.
<b>Involvement in disease</b>	Note=BCAP31 is deleted in the chromosome Xq28 deletion syndrome which involves BCAP31 and the and the promoter region of ABCD1.
<b>Sequence similarities</b>	Belongs to the BCAP29/BCAP31 family.
<b>Post-translational modifications</b>	Cleaved by CASP8 and other caspases.
<b>Cellular localization</b>	Endoplasmic reticulum membrane. Endoplasmic reticulum-Golgi intermediate compartment membrane. May shuttle between the ER and the intermediate compartment/cis-Golgi complex.

## Images



**All lanes** : Anti-BAP31 antibody (ab37120) at 0.5 µg/ml

**Lane 1** : 293 cell lysate

**Lane 2** : A431 cell lysates

**Lane 3** : A559 cell lysate

**Lane 4** : Caco-2 (Human colorectal adenocarcinoma) cell lysate

**Lane 5** : Daudi cell lysate

**Lane 6** : HeLa cell lysate

**Lane 7** : HepG2 cell lysate

**Lane 8** : K562 cell lysate

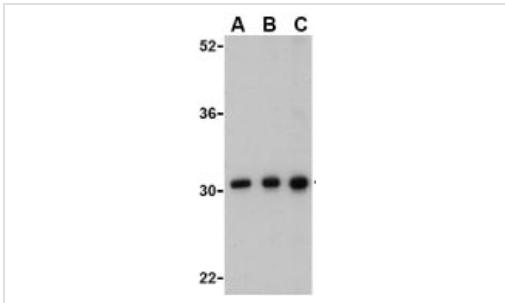
- Lane 9** : MCF-7 cell lysate
- Lane 10** : Jurkat cell lysate
- Lane 11** : SK-N-SH cell lysate
- Lane 12** : THP-1 cell lysate
- Lane 13** : 3T3/NIH
- Lane 14** : YB2/0 cell lysate

Lysates/proteins at 15 µg per lane.

**Secondary**

**All lanes** : Goat anti-rabbit IgG HRP conjugate at 1/10000 dilution

**Predicted band size:** 28 kDa



Western blot - Anti-BAP31 antibody (ab37120)

- Lane 1** : Anti-BAP31 antibody (ab37120) at 0.5 µg/ml
- Lane 2** : Anti-BAP31 antibody (ab37120) at 1 µg/ml
- Lane 3** : Anti-BAP31 antibody (ab37120) at 2 µg/ml

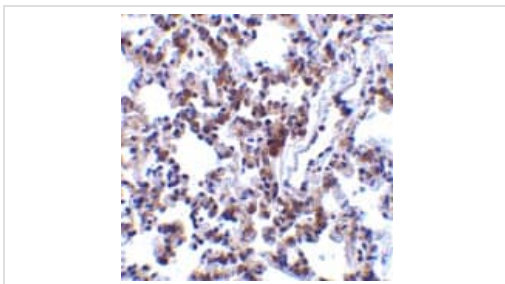
**All lanes** : Ramos cell lysate

Lysates/proteins at 15 µg per lane.

**Predicted band size:** 28 kDa

**Observed band size:** 31 kDa

[why is the actual band size different from the predicted?](#)



Immunohistochemistry (Formalin/PFA-fixed paraffin-embedded sections) - Anti-BAP31 antibody (ab37120)

ab37120 at 2µg/ml staining BAP31 in rat lung tissue by IHC

**Please note:** All products are "FOR RESEARCH USE ONLY. NOT FOR USE IN DIAGNOSTIC PROCEDURES"

**Our Promise to you: Quality guaranteed and expert technical support**

- Replacement or refund for products not performing as stated on the datasheet
- Valid for 12 months from date of delivery
- Response to your inquiry within 24 hours
  
- We provide support in Chinese, English, French, German, Japanese and Spanish
- Extensive multi-media technical resources to help you
- We investigate all quality concerns to ensure our products perform to the highest standards

If the product does not perform as described on this datasheet, we will offer a refund or replacement. For full details of the Abpromise, please visit <https://www.abcam.com/abpromise> or contact our technical team.

### **Terms and conditions**

---

- Guarantee only valid for products bought direct from Abcam or one of our authorized distributors