

## Product datasheet

# Anti-BARHL1 antibody ab235096

2 Images

### Overview

<b>Product name</b>	Anti-BARHL1 antibody
<b>Description</b>	Rabbit polyclonal to BARHL1
<b>Host species</b>	Rabbit
<b>Tested applications</b>	<b>Suitable for:</b> IHC-P, WB
<b>Species reactivity</b>	<b>Reacts with:</b> Human <b>Predicted to work with:</b> Mouse, Rat
<b>Immunogen</b>	<p>Recombinant fragment corresponding to Human BARHL1 aa 38-176. Sequence:</p> <p>LSPRSESSDCSSPASPGRDCLETGTPRPGGASGPGLD SHLQPGQLSAPA QSRTVTSSFLIRDILADCKPLAACAPYSSSGQPAAPEPGG RLAAKAAEDF RDKLDKSGSNASSDSEYKVKEEGDREISSRDSPVRLK</p> <p>Database link: <a href="#">Q9BZE3</a></p> <p style="text-align: right;"> <a href="#">Run BLAST with</a>       <a href="#">Run BLAST with</a></p>
<b>Positive control</b>	WB: SH-SY5Y and U-251 MG whole cell lysate. IHC-P: Human testis tissue.
<b>General notes</b>	<p>Reproducibility is key to advancing scientific discovery and accelerating scientists' next breakthrough.</p> <p>Abcam is leading the way with our range of recombinant antibodies, knockout-validated antibodies and knockout cell lines, all of which support improved reproducibility.</p> <p>We are also planning to innovate the way in which we present recommended applications and species on our product datasheets, so that only applications &amp; species that have been tested in our own labs, our suppliers or by selected trusted collaborators are covered by our Abpromise™ guarantee.</p> <p>In preparation for this, we have started to update the applications &amp; species that this product is Abpromise guaranteed for.</p> <p>We are also updating the applications &amp; species that this product has been “predicted to work with,” however this information is not covered by our Abpromise guarantee.</p> <p>Applications &amp; species from publications and Abreviews that have not been tested in our own labs or in those of our suppliers are not covered by the Abpromise guarantee.</p> <p>Please check that this product meets your needs before purchasing. If you have any questions,</p>

special requirements or concerns, please send us an inquiry and/or contact our Support team ahead of purchase. Recommended alternatives for this product can be found below, as well as customer reviews and Q&As.

## Properties

---

<b>Form</b>	Liquid
<b>Storage instructions</b>	Shipped at 4°C. Store at +4°C short term (1-2 weeks). Upon delivery aliquot. Store at -20°C long term. Avoid freeze / thaw cycle.
<b>Storage buffer</b>	pH: 7.40 Constituents: PBS, 50% Glycerol (glycerin, glycerine), 0.03% Proclin 300
<b>Purity</b>	Protein G purified
<b>Purification notes</b>	Purity >95%
<b>Clonality</b>	Polyclonal
<b>Isotype</b>	IgG

## Applications

---

Our [Abpromise guarantee](#) covers the use of **ab235096** in the following tested applications.

The application notes include recommended starting dilutions; optimal dilutions/concentrations should be determined by the end user.

Application	Abreviews	Notes
IHC-P		1/200 - 1/500.
WB		1/500 - 1/5000.

---

## Target

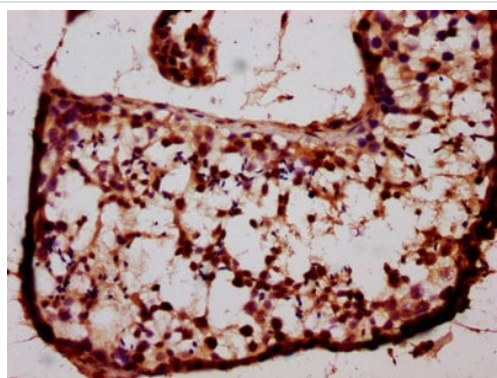
---

<b>Sequence similarities</b>	Belongs to the BAR homeobox family. Contains 1 homeobox DNA-binding domain.
<b>Cellular localization</b>	Nucleus.

---

## Images

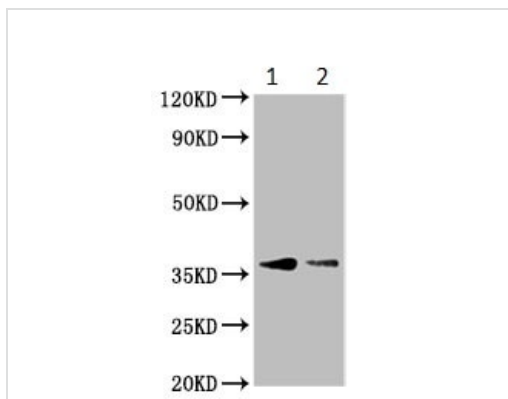
---



Immunohistochemistry (Formalin/PFA-fixed paraffin-embedded sections) - Anti-BARHL1 antibody (ab235096)

Paraffin-embedded human testis tissue stained for BARHL1 using ab235096 at 1/400 dilution in immunohistochemical analysis.

After dewaxing and hydration, antigen retrieval was mediated by high pressure in a citrate buffer (pH 6.0). Section was blocked with 10% normal goat serum 30 minutes at RT. Then primary antibody (1% BSA) was incubated at 4°C overnight. The primary is detected by a biotinylated secondary antibody and visualized using an HRP conjugated SP system.



Western blot - Anti-BARHL1 antibody (ab235096)

**All lanes :** Anti-BARHL1 antibody (ab235096) at 1/500 dilution

**Lane 1 :** SH-SY5Y (human neuroblastoma cell line from bone marrow) whole cell lysate

**Lane 2 :** U-251 MG (human brain glioma cell line) whole cell lysate

**Secondary**

**All lanes :** Goat polyclonal to rabbit IgG at 1/50000 dilution

**Please note:** All products are "FOR RESEARCH USE ONLY. NOT FOR USE IN DIAGNOSTIC PROCEDURES"

**Our Abpromise to you: Quality guaranteed and expert technical support**

- Replacement or refund for products not performing as stated on the datasheet
- Valid for 12 months from date of delivery
- Response to your inquiry within 24 hours
  
- We provide support in Chinese, English, French, German, Japanese and Spanish
- Extensive multi-media technical resources to help you
- We investigate all quality concerns to ensure our products perform to the highest standards

If the product does not perform as described on this datasheet, we will offer a refund or replacement. For full details of the Abpromise, please visit <https://www.abcam.com/abpromise> or contact our technical team.

## Terms and conditions

---

- Guarantee only valid for products bought direct from Abcam or one of our authorized distributors