

## Product datasheet

# Anti-BCA225 antibody [CU18] ab3360

[1 References](#) [1 Image](#)

### Overview

---

<b>Product name</b>	Anti-BCA225 antibody [CU18]
<b>Description</b>	Mouse monoclonal [CU18] to BCA225
<b>Host species</b>	Mouse
<b>Tested applications</b>	<b>Suitable for:</b> IHC-P
<b>Species reactivity</b>	<b>Reacts with:</b> Human
<b>Immunogen</b>	Tissue, cells or virus corresponding to BCA225. BCA 225 protein secreted by the T47D (Clone 11) human breast carcinoma cell line.
<b>Positive control</b>	IHC-P: Breast carcinoma (human).
<b>General notes</b>	<p>The Life Science industry has been in the grips of a reproducibility crisis for a number of years. Abcam is leading the way in addressing this with our range of recombinant monoclonal antibodies and knockout edited cell lines for gold-standard validation. Please check that this product meets your needs before purchasing.</p> <p>If you have any questions, special requirements or concerns, please send us an inquiry and/or contact our Support team ahead of purchase. Recommended alternatives for this product can be found below, along with publications, customer reviews and Q&amp;As</p>

### Properties

---

<b>Form</b>	Liquid
<b>Storage instructions</b>	Shipped at 4°C. Store at +4°C short term (1-2 weeks). Store at -20°C or -80°C. Avoid freeze / thaw cycle.
<b>Storage buffer</b>	Preservative: 0.1% Sodium azide Constituents: 1% BSA, PBS
<b>Purity</b>	Affinity purified
<b>Clonality</b>	Monoclonal
<b>Clone number</b>	CU18
<b>Isotype</b>	IgG1

### Applications

---

## The Abpromise guarantee

Our [Abpromise guarantee](#) covers the use of ab3360 in the following tested applications.

The application notes include recommended starting dilutions; optimal dilutions/concentrations should be determined by the end user.

Application	Abreviews	Notes
IHC-P		1/40.

---

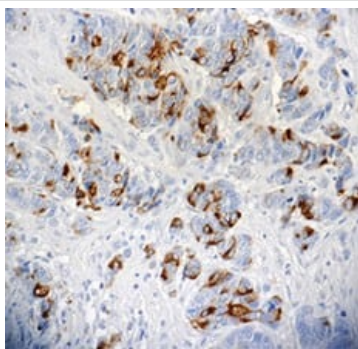
## Target

### Relevance

BCA225 is a 225 kDa glycoprotein secreted by the T47D breast carcinoma cell line.

---

## Images



Immunohistochemistry (Formalin/PFA-fixed paraffin-embedded sections) analysis of human breast tumor tissue labeling BCA225 with ab3360 at 1/40 dilution for 20 minutes at room temperature.

Immunohistochemistry (Formalin/PFA-fixed paraffin-embedded sections) - Anti-BCA225 antibody [CU18] (ab3360)

**Please note:** All products are "FOR RESEARCH USE ONLY. NOT FOR USE IN DIAGNOSTIC PROCEDURES"

---

## Our Abpromise to you: Quality guaranteed and expert technical support

- Replacement or refund for products not performing as stated on the datasheet
- Valid for 12 months from date of delivery
- Response to your inquiry within 24 hours
- We provide support in Chinese, English, French, German, Japanese and Spanish
- Extensive multi-media technical resources to help you
- We investigate all quality concerns to ensure our products perform to the highest standards

If the product does not perform as described on this datasheet, we will offer a refund or replacement. For full details of the Abpromise, please visit <https://www.abcam.com/abpromise> or contact our technical team.

---

## Terms and conditions

- Guarantee only valid for products bought direct from Abcam or one of our authorized distributors