


Product datasheet

Anti-Bcl10 antibody ab227156

3 Images

Overview

<b>Product name</b>	Anti-Bcl10 antibody
<b>Description</b>	Rabbit polyclonal to Bcl10
<b>Host species</b>	Rabbit
<b>Tested applications</b>	<b>Suitable for:</b> IHC-P, WB
<b>Species reactivity</b>	<b>Reacts with:</b> Mouse, Human <b>Predicted to work with:</b> Rat, Cow, Pig, Rhesus monkey 
<b>Immunogen</b>	Recombinant fragment within Human Bcl10 (internal sequence). The exact sequence is proprietary. Database link: <a href="#">O95999</a>
<b>Positive control</b>	WB: Jurkat, Neuro-2a, GL261 and C8D30 whole cell lysate. IHC-P: Human breast cancer tissue.

Properties

<b>Form</b>	Liquid
<b>Storage instructions</b>	Shipped at 4°C. Store at +4°C short term (1-2 weeks). Upon delivery aliquot. Store at -20°C long term. Avoid freeze / thaw cycle.
<b>Storage buffer</b>	pH: 7.00 Preservative: 0.01% Thimerosal (merthiolate) Constituents: 1% BSA, 20% Glycerol, PBS
<b>Purity</b>	Immunogen affinity purified
<b>Clonality</b>	Polyclonal
<b>Isotype</b>	IgG

Applications

Our [Abpromise guarantee](#) covers the use of **ab227156** in the following tested applications.

The application notes include recommended starting dilutions; optimal dilutions/concentrations should be determined by the end user.

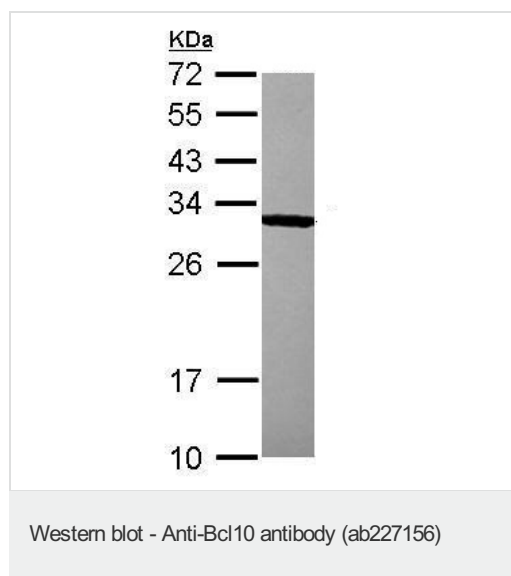
Application	Abreviews	Notes
IHC-P		1/100 - 1/1000.

Application	Abreviews	Notes
WB		1/500 - 1/3000. Predicted molecular weight: 26 kDa.

## Target

<b>Function</b>	Promotes apoptosis, pro-caspase-9 maturation and activation of NF-kappa-B via NIK and IKK. May be an adapter protein between upstream TNFR1-TRADD-RIP complex and the downstream NIK-IKK-IKAP complex. Is a substrate for MALT1.
<b>Tissue specificity</b>	Ubiquitous.
<b>Involvement in disease</b>	Note=A chromosomal aberration involving BCL10 is recurrent in low-grade mucosa-associated lymphoid tissue (MALT lymphoma). Translocation t(1;14)(p22;q32). Although the BCL10/IgH translocation leaves the coding region of BCL10 intact, frequent BCL10 mutations could be attributed to the Ig somatic hypermutation mechanism resulting in nucleotide transitions. Note=Defects in BCL10 are involved in various types of cancer.
<b>Sequence similarities</b>	Contains 1 CARD domain.
<b>Post-translational modifications</b>	Phosphorylated. Phosphorylation results in dissociation from TRAF2 and binding to BIRC2/c-IAP2.
<b>Cellular localization</b>	Cytoplasm > perinuclear region. Membrane raft. Appears to have a perinuclear, compact and filamentous pattern of expression. Also found in the nucleus of several types of tumor cells. Colocalized with DPP4 in membrane rafts.

## Images

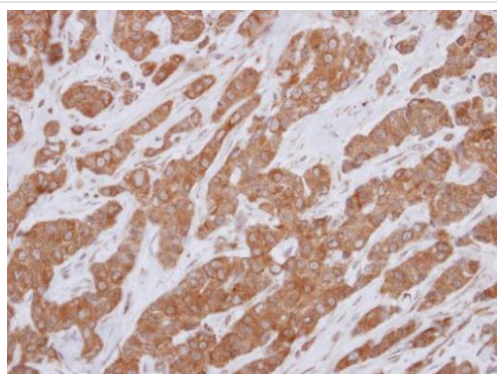


Anti-Bcl10 antibody (ab227156) at 1/1000 dilution + Jurkat (human T cell leukemia cell line from peripheral blood) whole cell lysate at 30 µg

Developed using the ECL technique.

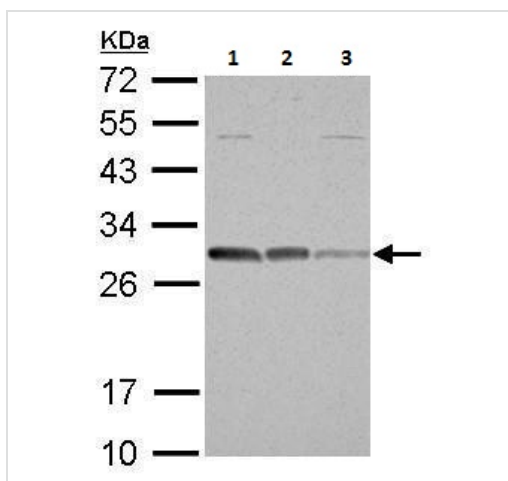
**Predicted band size:** 26 kDa

12% SDS PAGE



Immunohistochemistry (Formalin/PFA-fixed paraffin-embedded sections) - Anti-Bcl10 antibody (ab227156)

Paraffin-embedded human breast cancer tissue stained for Bcl10 with ab227156 at 1/250 dilution in immunohistochemical analysis.



Western blot - Anti-Bcl10 antibody (ab227156)

**All lanes :** Anti-Bcl10 antibody (ab227156) at 1/1000 dilution

**Lane 1 :** Neuro-2A (mouse neuroblastoma cell line) whole cell lysate

**Lane 2 :** GL261 whole cell lysate

**Lane 3 :** C8D30 whole cell lysate

Lysates/proteins at 30 µg per lane.

Developed using the ECL technique.

**Predicted band size:** 26 kDa

12 % SDS-PAGE

**Please note:** All products are "FOR RESEARCH USE ONLY. NOT FOR USE IN DIAGNOSTIC PROCEDURES"

### Our Abpromise to you: Quality guaranteed and expert technical support

- Replacement or refund for products not performing as stated on the datasheet
- Valid for 12 months from date of delivery
- Response to your inquiry within 24 hours

- We provide support in Chinese, English, French, German, Japanese and Spanish
- Extensive multi-media technical resources to help you
- We investigate all quality concerns to ensure our products perform to the highest standards

If the product does not perform as described on this datasheet, we will offer a refund or replacement. For full details of the Abpromise, please visit <https://www.abcam.com/abpromise> or contact our technical team.

### **Terms and conditions**

---

- Guarantee only valid for products bought direct from Abcam or one of our authorized distributors