

Product datasheet

Anti-Bcl10 antibody ab227206

★★★★☆ 1 Abreviews 7 Images

Overview

Product name	Anti-Bcl10 antibody
Description	Rabbit polyclonal to Bcl10
Host species	Rabbit
Tested applications	Suitable for: IHC-P, WB, ICC/IF, IP
Species reactivity	Reacts with: Mouse, Human Predicted to work with: Rat, Cow, Pig, Rhesus monkey
Immunogen	Recombinant fragment within Human Bcl10 (internal sequence). The exact sequence is proprietary. Database link: O95999
Positive control	WB: HeLa cell extract; Raji, Neuro-2a, GL261 and C8D30 whole cell lysates. IP: Raji whole cell extract. IHC-P: Human gastric cancer tissue. ICC/IF: HeLa cells.
General notes	<p>Reproducibility is key to advancing scientific discovery and accelerating scientists' next breakthrough.</p> <p>Abcam is leading the way with our range of recombinant antibodies, knockout-validated antibodies and knockout cell lines, all of which support improved reproducibility.</p> <p>We are also planning to innovate the way in which we present recommended applications and species on our product datasheets, so that only applications & species that have been tested in our own labs, our suppliers or by selected trusted collaborators are covered by our Abpromise™ guarantee.</p> <p>In preparation for this, we have started to update the applications & species that this product is Abpromise guaranteed for.</p> <p>We are also updating the applications & species that this product has been “predicted to work with,” however this information is not covered by our Abpromise guarantee.</p> <p>Applications & species from publications and Abreviews that have not been tested in our own labs or in those of our suppliers are not covered by the Abpromise guarantee.</p> <p>Please check that this product meets your needs before purchasing. If you have any questions, special requirements or concerns, please send us an inquiry and/or contact our Support team ahead of purchase. Recommended alternatives for this product can be found below, as well as customer reviews and Q&As.</p>

Properties

Properties

Form	Liquid
Storage instructions	Shipped at 4°C. Store at +4°C short term (1-2 weeks). Upon delivery aliquot. Store at -20°C long term. Avoid freeze / thaw cycle.
Storage buffer	pH: 7.00 Preservative: 0.01% Thimerosal (merthiolate) Constituents: 78.99% PBS, 1% BSA, 20% Glycerol (glycerin, glycerine)
Purity	Immunogen affinity purified
Clonality	Polyclonal
Isotype	IgG

Applications

Our [Abpromise guarantee](#) covers the use of **ab227206** in the following tested applications.

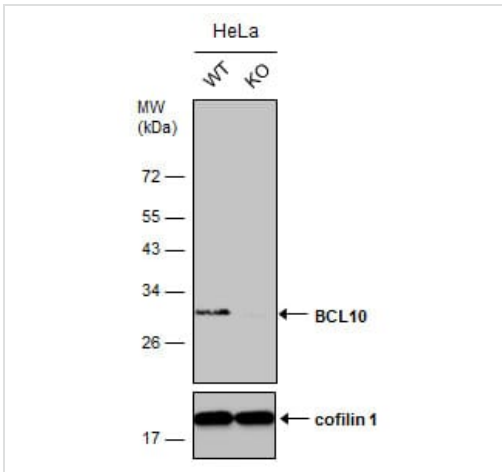
The application notes include recommended starting dilutions; optimal dilutions/concentrations should be determined by the end user.

Application	Abreviews	Notes
IHC-P		1/100 - 1/1000.
WB		1/500 - 1/3000. Predicted molecular weight: 26 kDa.
ICC/IF		1/100 - 1/1000.
IP		1/100 - 1/500.

Target

Function	Promotes apoptosis, pro-caspase-9 maturation and activation of NF-kappa-B via NIK and IKK. May be an adapter protein between upstream TNFR1-TRADD-RIP complex and the downstream NIK-IKK-IKAP complex. Is a substrate for MALT1.
Tissue specificity	Ubiquitous.
Involvement in disease	Note=A chromosomal aberration involving BCL10 is recurrent in low-grade mucosa-associated lymphoid tissue (MALT lymphoma). Translocation t(1;14)(p22;q32). Although the BCL10/IgH translocation leaves the coding region of BCL10 intact, frequent BCL10 mutations could be attributed to the Ig somatic hypermutation mechanism resulting in nucleotide transitions. Note=Defects in BCL10 are involved in various types of cancer.
Sequence similarities	Contains 1 CARD domain.
Post-translational modifications	Phosphorylated. Phosphorylation results in dissociation from TRAF2 and binding to BIRC2/c-IAP2.
Cellular localization	Cytoplasm > perinuclear region. Membrane raft. Appears to have a perinuclear, compact and filamentous pattern of expression. Also found in the nucleus of several types of tumor cells. Colocalized with DPP4 in membrane rafts.

Images



Western blot - Anti-Bcl10 antibody (ab227206)

All lanes : Anti-Bcl10 antibody (ab227206) at 1/2500 dilution

Lane 1 : WT HeLa cell extract

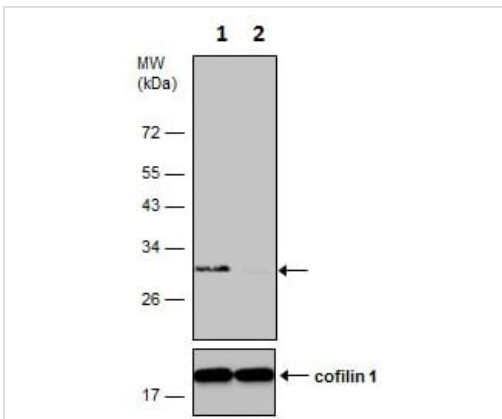
Lane 2 : Bcl10 Knockout HeLa cell extracts

Lysates/proteins at 30 µg per lane.

Secondary

All lanes : HRP-conjugated anti-rabbit IgG

Predicted band size: 26 kDa



Western blot - Anti-Bcl10 antibody (ab227206)

All lanes : Anti-Bcl10 antibody (ab227206) at 1/2500 dilution

Lane 1 : Wild-type HeLa (human epithelial cell line from cervix adenocarcinoma) cell extract

Lane 2 : Bcl10 knockout HeLa cell extract

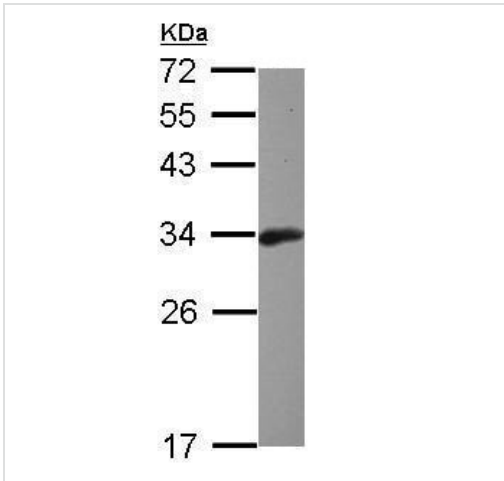
Lysates/proteins at 30 µg per lane.

Secondary

All lanes : HRP-conjugated anti-rabbit IgG

Predicted band size: 26 kDa

12% SDS-PAGE gel.

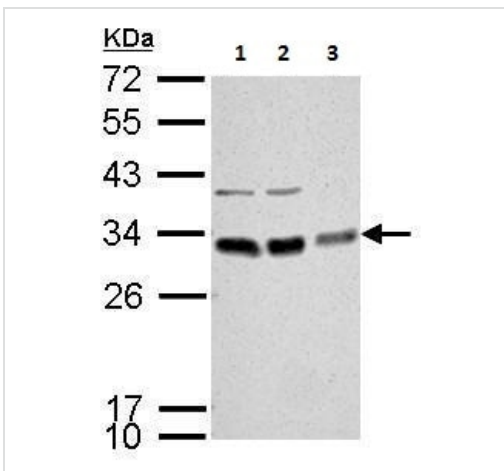


Western blot - Anti-Bcl10 antibody (ab227206)

Anti-Bcl10 antibody (ab227206) at 1/1000 dilution + Raji (human Burkitt's lymphoma cell line) whole cell lysate at 30 μ g

Predicted band size: 26 kDa

12% SDS PAGE gel.



Western blot - Anti-Bcl10 antibody (ab227206)

All lanes : Anti-Bcl10 antibody (ab227206) at 1/1000 dilution

Lane 1 : Neuro-2a (mouse neuroblastoma cell line) whole cell lysate

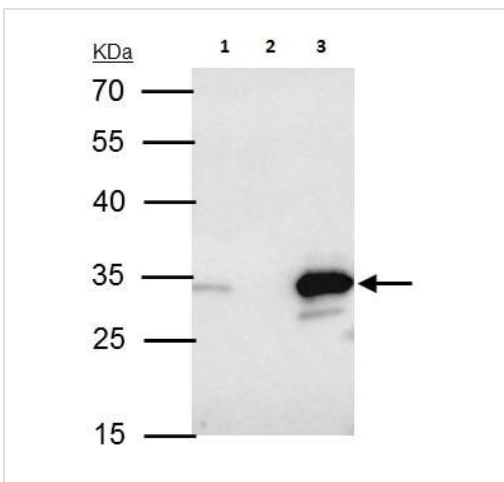
Lane 2 : GL261 whole cell lysate

Lane 3 : C8D30 whole cell lysate

Lysates/proteins at 30 μ g per lane.

Predicted band size: 26 kDa

12 % SDS-PAGE gel.



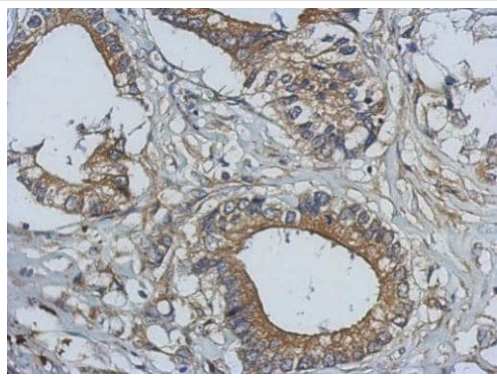
Immunoprecipitation - Anti-Bcl10 antibody (ab227206)

Bcl10 was immunoprecipitated from Raji (human Burkitt's lymphoma cell line) whole cell extract with 4 μ g ab227206. Western blot was performed from the immunoprecipitate using ab227206 at 1/500 dilution. Anti-rabbit IgG was used as a secondary reagent

Lane 1: Raji whole cell extract 40 μ g (Input).

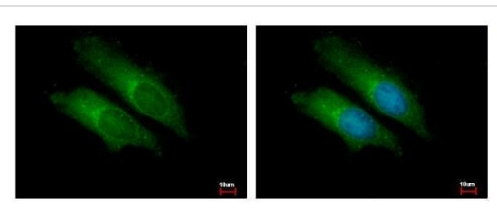
Lane 2: Control IP in Raji whole cell extract with 4 μ g of preimmune Rabbit IgG.

Lane 3: ab227206 IP in Raji whole cell extract.



Immunohistochemistry (Formalin/PFA-fixed paraffin-embedded sections) - Anti-Bcl10 antibody (ab227206)

Paraffin-embedded human gastric cancer tissue stained for Bcl10 using ab227206 at 1/500 dilution in immunohistochemical analysis.



Immunocytochemistry/ Immunofluorescence - Anti-Bcl10 antibody (ab227206)

2% paraformaldehyde-fixed HeLa (human epithelial cell line from cervix adenocarcinoma) cells stained for Bcl10 (green) using ab227206 at 1/500 dilution in ICC/IF.

Blue: Hoechst 33342 staining.

Please note: All products are "FOR RESEARCH USE ONLY. NOT FOR USE IN DIAGNOSTIC PROCEDURES"

Our Abpromise to you: Quality guaranteed and expert technical support

- Replacement or refund for products not performing as stated on the datasheet
- Valid for 12 months from date of delivery
- Response to your inquiry within 24 hours
- We provide support in Chinese, English, French, German, Japanese and Spanish
- Extensive multi-media technical resources to help you
- We investigate all quality concerns to ensure our products perform to the highest standards

If the product does not perform as described on this datasheet, we will offer a refund or replacement. For full details of the Abpromise, please visit <https://www.abcam.com/abpromise> or contact our technical team.

Terms and conditions

- Guarantee only valid for products bought direct from Abcam or one of our authorized distributors