

Product datasheet

Anti-Bcl10 antibody [EPR3174] - BSA and Azide free  
ab247661

Recombinant RabMAb

3 Images

Overview

<b>Product name</b>	Anti-Bcl10 antibody [EPR3174] - BSA and Azide free
<b>Description</b>	Rabbit monoclonal [EPR3174] to Bcl10 - BSA and Azide free
<b>Host species</b>	Rabbit
<b>Tested applications</b>	<b>Suitable for:</b> Flow Cyt (Intra), WB <b>Unsuitable for:</b> ICC,IHC-P or IP
<b>Species reactivity</b>	<b>Reacts with:</b> Human
<b>Immunogen</b>	Synthetic peptide. This information is proprietary to Abcam and/or its suppliers.
<b>General notes</b>	<p>ab247661 is the carrier-free version of <a href="#">ab108412</a>.</p> <p>Our <a href="#">carrier-free</a> antibodies are typically supplied in a PBS-only formulation, purified and free of BSA, sodium azide and glycerol. The carrier-free buffer and high concentration allow for increased conjugation efficiency.</p> <p>This conjugation-ready format is designed for use with fluorochromes, metal isotopes, oligonucleotides, and enzymes, which makes them ideal for antibody labelling, functional and cell-based assays, flow-based assays (e.g. mass cytometry) and Multiplex Imaging applications.</p> <p>Use our <a href="#">conjugation kits</a> for antibody conjugates that are ready-to-use in as little as 20 minutes with &lt;1 minute hands-on-time and 100% antibody recovery: available for fluorescent dyes, HRP, biotin and gold.</p> <p>This product is compatible with the Maxpar<sup>®</sup> Antibody Labeling Kit from Fluidigm, without the need for antibody preparation. Maxpar<sup>®</sup> is a trademark of Fluidigm Canada Inc.</p> <p>This product is a recombinant monoclonal antibody, which offers several advantages including:</p> <ul style="list-style-type: none"> <li>- High batch-to-batch consistency and reproducibility</li> <li>- Improved sensitivity and specificity</li> <li>- Long-term security of supply</li> <li>- Animal-free production</li> </ul> <p>For more information <a href="#">see here</a>.</p> <p>Our RabMAb<sup>®</sup> technology is a patented hybridoma-based technology for making rabbit monoclonal antibodies. For details on our patents, please refer to <a href="#">RabMAb<sup>®</sup> patents</a>.</p> <p>Mouse, Rat: We have preliminary internal testing data to indicate this antibody may not react with</p>

these species. Please contact us for more information.

## Properties

<b>Form</b>	Liquid
<b>Storage instructions</b>	Shipped at 4°C. Store at +4°C. Do Not Freeze.
<b>Storage buffer</b>	pH: 7.2 Constituent: PBS
<b>Carrier free</b>	Yes
<b>Purity</b>	Affinity purified
<b>Clonality</b>	Monoclonal
<b>Clone number</b>	EPR3174
<b>Isotype</b>	IgG

## Applications

**The Abpromise guarantee** Our [Abpromise guarantee](#) covers the use of ab247661 in the following tested applications. The application notes include recommended starting dilutions; optimal dilutions/concentrations should be determined by the end user.

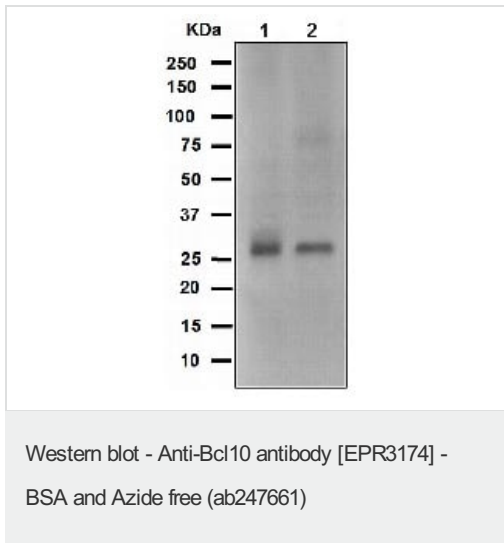
Application	Abreviews	Notes
Flow Cyt (Intra)		Use at an assay dependent concentration.
WB		Use at an assay dependent concentration. Predicted molecular weight: 26 kDa.

**Application notes** Is unsuitable for ICC, IHC-P or IP.

## Target

<b>Function</b>	Promotes apoptosis, pro-caspase-9 maturation and activation of NF-kappa-B via NIK and IKK. May be an adapter protein between upstream TNFR1-TRADD-RIP complex and the downstream NIK-IKK-IKAP complex. Is a substrate for MALT1.
<b>Tissue specificity</b>	Ubiquitous.
<b>Involvement in disease</b>	Note=A chromosomal aberration involving BCL10 is recurrent in low-grade mucosa-associated lymphoid tissue (MALT lymphoma). Translocation t(1;14)(p22;q32). Although the BCL10/IgH translocation leaves the coding region of BCL10 intact, frequent BCL10 mutations could be attributed to the Ig somatic hypermutation mechanism resulting in nucleotide transitions. Note=Defects in BCL10 are involved in various types of cancer.
<b>Sequence similarities</b>	Contains 1 CARD domain.
<b>Post-translational modifications</b>	Phosphorylated. Phosphorylation results in dissociation from TRAF2 and binding to BIRC2/c-IAP2.
<b>Cellular localization</b>	Cytoplasm > perinuclear region. Membrane raft. Appears to have a perinuclear, compact and filamentous pattern of expression. Also found in the nucleus of several types of tumor cells. Colocalized with DPP4 in membrane rafts.

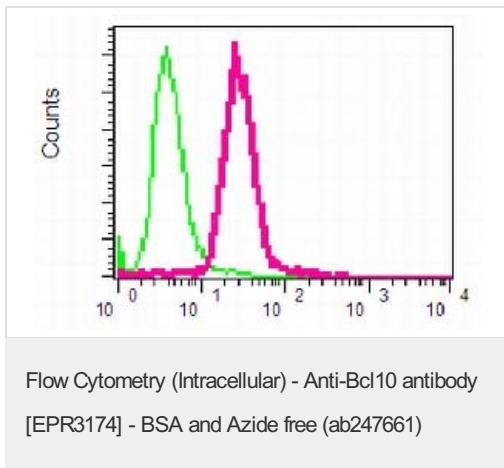
## Images



Anti-Bcl10 antibody [EPR3174] ([ab108412](#)) at 1/1000 dilution +  
Daudi cell lysate at 10 µg

**Predicted band size:** 26 kDa





This data was developed using [ab108412](#), the same antibody clone in a different buffer formulation.



This data was developed using [ab108412](#), the same antibody clone in a different buffer formulation.

Intracellular flow cytometric analysis of Bcl10 in permeabilized Raji cells, using [ab108412](#) at a 1/500 dilution (red) or a Rabbit IgG (negative) (green).

Why choose a recombinant antibody?

-  **Research with confidence**  
Consistent and reproducible results
-  **Long-term and scalable supply**  
Recombinant technology
-  **Success from the first experiment**  
Confirmed specificity
-  **Ethical standards compliant**  
Animal-free production

Anti-Bcl10 antibody [EPR3174] - BSA and Azide free (ab247661)

## **Our Abpromise to you: Quality guaranteed and expert technical support**

---

- Replacement or refund for products not performing as stated on the datasheet
- Valid for 12 months from date of delivery
- Response to your inquiry within 24 hours
  
- We provide support in Chinese, English, French, German, Japanese and Spanish
- Extensive multi-media technical resources to help you
- We investigate all quality concerns to ensure our products perform to the highest standards

If the product does not perform as described on this datasheet, we will offer a refund or replacement. For full details of the Abpromise, please visit <https://www.abcam.com/abpromise> or contact our technical team.

## **Terms and conditions**

---

- Guarantee only valid for products bought direct from Abcam or one of our authorized distributors