

Product datasheet

Anti-Bcl2-L-13 antibody ab27795

1 References 1 Image

Overview

Product name	Anti-Bcl2-L-13 antibody
Description	Rabbit polyclonal to Bcl2-L-13
Host species	Rabbit
Tested applications	Suitable for: WB
Species reactivity	Reacts with: Human
Immunogen	Synthetic peptide corresponding to Mouse Bcl2-L-13. (Peptide available as ab41715)
Positive control	Jurkat cell lysate.
General notes	<p>This product is manufactured by BioVision, an Abcam company and was previously called 3671 Bcl-Rambo Antibody. 3671-100 is the same size as the 100 µg size of ab27795.</p> <p>The Life Science industry has been in the grips of a reproducibility crisis for a number of years. Abcam is leading the way in addressing this with our range of recombinant monoclonal antibodies and knockout edited cell lines for gold-standard validation. Please check that this product meets your needs before purchasing.</p> <p>If you have any questions, special requirements or concerns, please send us an inquiry and/or contact our Support team ahead of purchase. Recommended alternatives for this product can be found below, along with publications, customer reviews and Q&As</p>

Properties

Form	Liquid
Storage instructions	Shipped at 4°C. Store at +4°C short term (1-2 weeks). Upon delivery aliquot. Store at -20°C or -80°C. Avoid freeze / thaw cycle.
Storage buffer	Preservative: 0.02% Thimerosal (merthiolate) Constituents: PBS, 20% Glycerol (glycerin, glycerine), 0.1% BSA
Purity	Protein A purified
Clonality	Polyclonal
Isotype	IgG

Applications

The Abpromise guarantee

Our [Abpromise guarantee](#) covers the use of ab27795 in the following tested applications.

The application notes include recommended starting dilutions; optimal dilutions/concentrations should be determined by the end user.

Application	Abreviews	Notes
WB		Use a concentration of 1 - 4 µg/ml. Predicted molecular weight: 53 kDa.

Target

Function

May promote the activation of caspase-3 and apoptosis.

Tissue specificity

Ubiquitous, with the highest levels of expression in heart, placenta and pancreas.

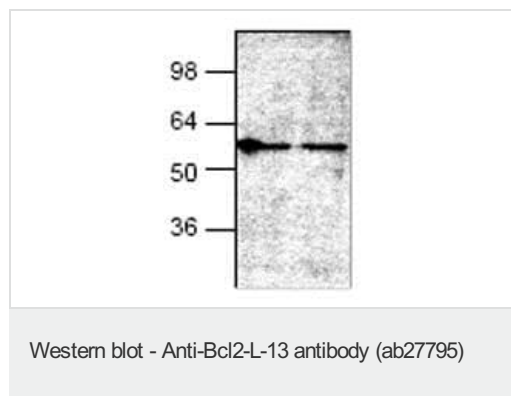
Sequence similarities

Belongs to the Bcl-2 family.

Cellular localization

Nucleus and Mitochondrion membrane. Nucleus.

Images



Anti-Bcl2-L-13 antibody (ab27795) at 4 µg/ml + Jurkat cell lysate

Predicted band size: 53 kDa

Observed band size: 56 kDa

Please note: All products are "FOR RESEARCH USE ONLY. NOT FOR USE IN DIAGNOSTIC PROCEDURES"

Our Abpromise to you: Quality guaranteed and expert technical support

- Replacement or refund for products not performing as stated on the datasheet
- Valid for 12 months from date of delivery
- Response to your inquiry within 24 hours
- We provide support in Chinese, English, French, German, Japanese and Spanish
- Extensive multi-media technical resources to help you
- We investigate all quality concerns to ensure our products perform to the highest standards

If the product does not perform as described on this datasheet, we will offer a refund or replacement. For full details of the Abpromise, please visit <https://www.abcam.com/abpromise> or contact our technical team.

Terms and conditions

- Guarantee only valid for products bought direct from Abcam or one of our authorized distributors