


Product datasheet

Biotin Anti-BDNF antibody ab245864

2 Images

Overview

<b>Product name</b>	Biotin Anti-BDNF antibody
<b>Description</b>	Biotin Rabbit polyclonal to BDNF
<b>Host species</b>	Rabbit
<b>Conjugation</b>	Biotin
<b>Tested applications</b>	<b>Suitable for:</b> WB, Sandwich ELISA
<b>Species reactivity</b>	<b>Reacts with:</b> Recombinant fragment <b>Predicted to work with:</b> Mouse, Rat, Horse, Cow, Cat, Dog, Human, Pig, Chimpanzee, Rhesus monkey 

**Immunogen** Recombinant full length protein corresponding to Human BDNF aa 129-247. Full-length mature chainlacking the signal peptide and propeptide. Produced in E.coli.  
Sequence:  
MHSDPARRGELSVCDSEWVTAADKKTAVDMSGGTVT  
VLEKVPVSKGQL  
KQYFYETKCNPMGYTKEGCRGIDKRHWNSQCRTTQSYVR  
ALTMDSKKRIG WRFIRIDTSCVCTLTIKRGR

Database link: [P23560](#)

 [Run BLAST with](#)

 [Run BLAST with](#)

**Positive control** WB: Recombinant human BDNF protein. sELISA: Recombinant human BDNF protein.

**General notes** Reproducibility is key to advancing scientific discovery and accelerating scientists' next breakthrough.

Abcam is leading the way with our range of recombinant antibodies, knockout-validated antibodies and knockout cell lines, all of which support improved reproducibility.

We are also planning to innovate the way in which we present recommended applications and species on our product datasheets, so that only applications & species that have been tested in our own labs, our suppliers or by selected trusted collaborators are covered by our Abpromise™ guarantee.

In preparation for this, we have started to update the applications & species that this product is Abpromise guaranteed for.

We are also updating the applications & species that this product has been "predicted to work with," however this information is not covered by our Abpromise guarantee.

Applications & species from publications and Abreviews that have not been tested in our own

labs or in those of our suppliers are not covered by the Abpromise guarantee.

Please check that this product meets your needs before purchasing. If you have any questions, special requirements or concerns, please send us an inquiry and/or contact our Support team ahead of purchase. Recommended alternatives for this product can be found below, as well as customer reviews and Q&As.

## Properties

---

<b>Form</b>	Lyophilized:Reconstitute in sterile PBS + 0.1% BSA to 0.1-1.0mg/ml.
<b>Storage instructions</b>	Shipped at 4°C. Store at +4°C short term (1-2 weeks). Upon delivery aliquot. Store at -20°C long term. Avoid freeze / thaw cycle. Store In the Dark.
<b>Storage buffer</b>	Constituent: PBS
<b>Purity</b>	Affinity purified
<b>Clonality</b>	Polyclonal
<b>Isotype</b>	IgG

## Applications

---

Our [Abpromise guarantee](#) covers the use of **ab245864** in the following tested applications.

The application notes include recommended starting dilutions; optimal dilutions/concentrations should be determined by the end user.

Application	Abreviews	Notes
WB		Use a concentration of 0.1 - 0.2 µg/ml. Predicted molecular weight: 27 kDa.
Sandwich ELISA		Use a concentration of 0.25 - 1 µg/ml.

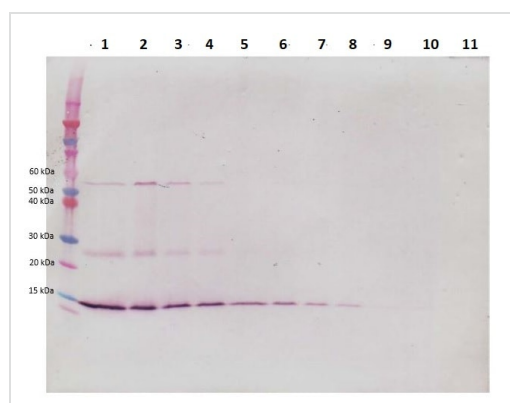
## Target

---

<b>Function</b>	During development, promotes the survival and differentiation of selected neuronal populations of the peripheral and central nervous systems. Participates in axonal growth, pathfinding and in the modulation of dendritic growth and morphology. Major regulator of synaptic transmission and plasticity at adult synapses in many regions of the CNS. The versatility of BDNF is emphasized by its contribution to a range of adaptive neuronal responses including long-term potentiation (LTP), long-term depression (LTD), certain forms of short-term synaptic plasticity, as well as homeostatic regulation of intrinsic neuronal excitability.
<b>Tissue specificity</b>	Brain. Highly expressed in hippocampus, amygdala, cerebral cortex and cerebellum. Also expressed in heart, lung, skeletal muscle, testis, prostate and placenta.
<b>Involvement in disease</b>	Bulimia nervosa 2 Congenital central hypoventilation syndrome
<b>Sequence similarities</b>	Belongs to the NGF-beta family.
<b>Post-translational modifications</b>	The propeptide is N-glycosylated and glycosulfated. Converted into mature BDNF by plasmin (PLG).
<b>Cellular localization</b>	Secreted.

---

## Images



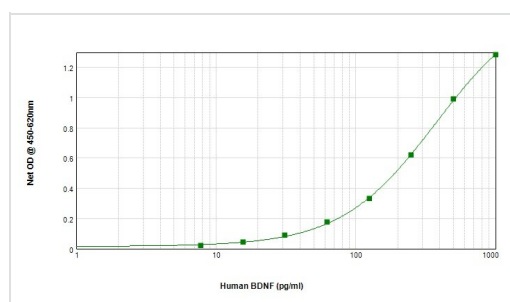
Western blot - Biotin Anti-BDNF antibody  
(ab245864)

To detect human BDNF by Western Blot analysis ab245864 can be used at a concentration of 0.1 - 0.2 µg/ml.

Used in conjunction with compatible secondary reagents the detection limit for recombinant human BDNF is 1.5 - 3.0 ng/lane, under either reducing or non-reducing conditions.

**Lanes 1-11:** 250, 125, 62.5, 31.25, 15.625, 7.8, 3.9, 1.95, 0.975, 0.4875 and 0.24 ng recombinant human BDNF, respectively.

Non-reducing conditions.



Sandwich ELISA - Biotin Anti-BDNF antibody  
(ab245864)

To detect humanBDNF by sandwich ELISA (using 100 µl/well antibody solution) a concentration of 0.25 – 1.0 µg/ml of ab245864 is required.

This biotinylated polyclonal antibody, in conjunction with a capture antibody, allows the detection of at least 0.2 – 0.4 ng/well of recombinant human BDNF.

**Please note:** All products are "FOR RESEARCH USE ONLY. NOT FOR USE IN DIAGNOSTIC PROCEDURES"

## Our Abpromise to you: Quality guaranteed and expert technical support

- Replacement or refund for products not performing as stated on the datasheet
- Valid for 12 months from date of delivery
- Response to your inquiry within 24 hours
- We provide support in Chinese, English, French, German, Japanese and Spanish
- Extensive multi-media technical resources to help you
- We investigate all quality concerns to ensure our products perform to the highest standards

If the product does not perform as described on this datasheet, we will offer a refund or replacement. For full details of the Abpromise, please visit <https://www.abcam.com/abpromise> or contact our technical team.

## Terms and conditions

- Guarantee only valid for products bought direct from Abcam or one of our authorized distributors