

Product datasheet

Anti-BDNF antibody [BS375] ab228505

1 Image

Overview

Product name	Anti-BDNF antibody [BS375]
Description	Mouse monoclonal [BS375] to BDNF
Host species	Mouse
Tested applications	Suitable for: Flow Cyt
Species reactivity	Reacts with: Human
Immunogen	Synthetic peptide corresponding to Human BDNF aa 47-58. Sequence: C-NGPKAGSRGLTS Database link: P23560 Run BLAST with Run BLAST with
Positive control	Flow Cyt: SH-SY5Y cells.

Properties

Form	Lyophilised: Spin vial briefly before opening. Reconstitute in 100 µL of sterile water. Centrifuge to remove any insoluble material. Final buffer contains no preservatives. After reconstitution divide into aliquots and store at -20°C for a higher stability. Antibody contains no preservatives. Store at 4°C with an appropriate antibacterial agent. Use sterile methods. Highest purity Glycerol (1:1) may be added for an additional stability when stored at refrigerated or freezing temperatures.
Storage instructions	Shipped at 4°C. Store at +4°C short term (1-2 weeks). Upon delivery aliquot. Store at -20°C long term. Avoid freeze / thaw cycle.
Storage buffer	pH: 7.4 Constituents: PBS, 3% Trehalose Lyophilized without preservatives.
Purity	Protein G purified
Clonality	Monoclonal
Clone number	BS375
Isotype	IgG1
Light chain type	kappa

Applications

Our [Abpromise guarantee](#) covers the use of **ab228505** in the following tested applications.

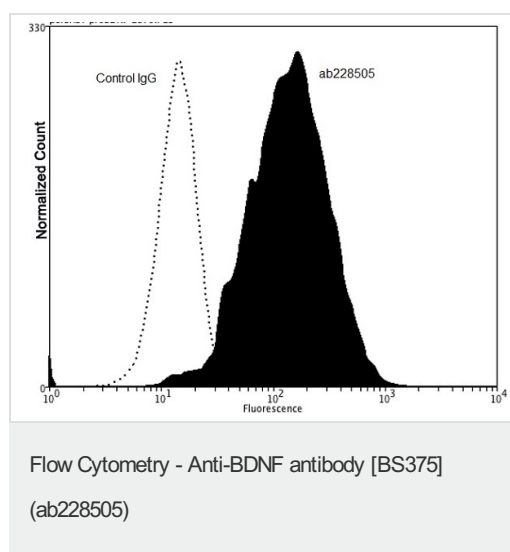
The application notes include recommended starting dilutions; optimal dilutions/concentrations should be determined by the end user.

Application	Abreviews	Notes
Flow Cyt		Use 2µl for 10 ⁶ cells.

Target

Function	During development, promotes the survival and differentiation of selected neuronal populations of the peripheral and central nervous systems. Participates in axonal growth, pathfinding and in the modulation of dendritic growth and morphology. Major regulator of synaptic transmission and plasticity at adult synapses in many regions of the CNS. The versatility of BDNF is emphasized by its contribution to a range of adaptive neuronal responses including long-term potentiation (LTP), long-term depression (LTD), certain forms of short-term synaptic plasticity, as well as homeostatic regulation of intrinsic neuronal excitability.
Tissue specificity	Brain. Highly expressed in hippocampus, amygdala, cerebral cortex and cerebellum. Also expressed in heart, lung, skeletal muscle, testis, prostate and placenta.
Involvement in disease	Bulimia nervosa 2 Congenital central hypoventilation syndrome
Sequence similarities	Belongs to the NGF-beta family.
Post-translational modifications	The propeptide is N-glycosylated and glycosulfated. Converted into mature BDNF by plasmin (PLG).
Cellular localization	Secreted.

Images



Flow cytometric analysis of methanol-fixed (10 minutes on ice), 0.1% Tween-20-permeabilized SH-SY5Y (human neuroblastoma cell line from bone marrow) cells labeling BDNF with ab228505 at 2 µg per 10⁶ cells (black) compared with a Rabbit IgG Control (white). Goat anti-Mouse PE at 1/100 dilution was used as the secondary antibody.

Please note: All products are "FOR RESEARCH USE ONLY. NOT FOR USE IN DIAGNOSTIC PROCEDURES"

Our Abpromise to you: Quality guaranteed and expert technical support

- Replacement or refund for products not performing as stated on the datasheet
- Valid for 12 months from date of delivery
- Response to your inquiry within 24 hours

- We provide support in Chinese, English, French, German, Japanese and Spanish
- Extensive multi-media technical resources to help you
- We investigate all quality concerns to ensure our products perform to the highest standards

If the product does not perform as described on this datasheet, we will offer a refund or replacement. For full details of the Abpromise, please visit <https://www.abcam.com/abpromise> or contact our technical team.

Terms and conditions

- Guarantee only valid for products bought direct from Abcam or one of our authorized distributors