



Product datasheet

Anti-BET3 antibody ab239107

2 Images

Overview

| | |
|----------------------------|--|
| Product name | Anti-BET3 antibody |
| Description | Rabbit polyclonal to BET3 |
| Host species | Rabbit |
| Tested applications | Suitable for: IHC-P |
| Species reactivity | Reacts with: Human |
| Immunogen | <p>Recombinant full length protein corresponding to Human BET3 aa 1-180. Sequence:</p> <pre>MSRQANRGTESKKMSELFTLTYGALVTQLCKDYENDED VNKQLDKMGFN IGVRLIEDFLARSNVGRCHDFRETADVIAKVAFKMYLGITPS ITNWSPAG DEFSLILENNPLVDFVELPDNHSSLIYSNLLCGVLRGALEM VQMAVEAKF VQDTLKGDGVTEIRMRIFIRRIEDNLPAGEE</pre> <p>Database link: O43617-1</p> <p style="text-align: right;">  Run BLAST with  Run BLAST with </p> |
| Positive control | IHC-P: Human colon cancer and placenta tissue. |
| General notes | <p>Previously labelled as TRAPPC3.</p> <p>Reproducibility is key to advancing scientific discovery and accelerating scientists' next breakthrough.</p> <p>Abcam is leading the way with our range of recombinant antibodies, knockout-validated antibodies and knockout cell lines, all of which support improved reproducibility.</p> <p>We are also planning to innovate the way in which we present recommended applications and species on our product datasheets, so that only applications & species that have been tested in our own labs, our suppliers or by selected trusted collaborators are covered by our Abpromise™ guarantee.</p> <p>In preparation for this, we have started to update the applications & species that this product is Abpromise guaranteed for.</p> <p>We are also updating the applications & species that this product has been “predicted to work with,” however this information is not covered by our Abpromise guarantee.</p> <p>Applications & species from publications and Abreviews that have not been tested in our own labs or in those of our suppliers are not covered by the Abpromise guarantee.</p> |

Please check that this product meets your needs before purchasing. If you have any questions, special requirements or concerns, please send us an inquiry and/or contact our Support team ahead of purchase. Recommended alternatives for this product can be found below, as well as customer reviews and Q&As.

Properties

| | |
|-----------------------------|---|
| Form | Liquid |
| Storage instructions | Shipped at 4°C. Store at +4°C short term (1-2 weeks). Upon delivery aliquot. Store at -20°C long term. Avoid freeze / thaw cycle. |
| Storage buffer | pH: 7.40 Constituents: 50% Glycerol (glycerin, glycerine), PBS, 0.03% Proclin 300 |
| Purity | Protein G purified |
| Purification notes | Purity greater than 95%. |
| Clonality | Polyclonal |
| Isotype | IgG |

Applications

Our [Abpromise guarantee](#) covers the use of **ab239107** in the following tested applications.

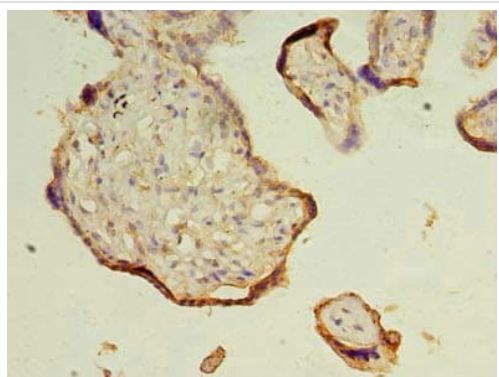
The application notes include recommended starting dilutions; optimal dilutions/concentrations should be determined by the end user.

| Application | Abreviews | Notes |
|-------------|-----------|---------------|
| IHC-P | | 1/20 - 1/200. |

Target

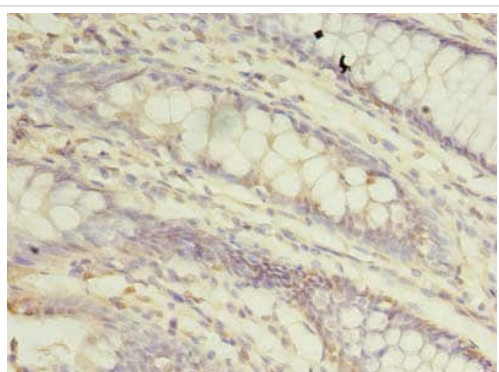
| | |
|------------------------------|---|
| Function | May play a role in vesicular transport from endoplasmic reticulum to Golgi. |
| Sequence similarities | Belongs to the TRAPP small subunits family. BET3 subfamily. |
| Cellular localization | Golgi apparatus > cis-Golgi network. Endoplasmic reticulum. |

Images



Immunohistochemistry (Formalin/PFA-fixed paraffin-embedded sections) - Anti-BET3 antibody (ab239107)

Paraffin-embedded human placenta tissue stained for BET3 with ab239107 at a 1/100 dilution in immunohistochemical analysis.



Immunohistochemistry (Formalin/PFA-fixed paraffin-embedded sections) - Anti-BET3 antibody (ab239107)

Paraffin-embedded human colon cancer tissue stained for BET3 with ab239107 at a 1/100 dilution in immunohistochemical analysis.

Please note: All products are "FOR RESEARCH USE ONLY. NOT FOR USE IN DIAGNOSTIC PROCEDURES"

Our Abpromise to you: Quality guaranteed and expert technical support

- Replacement or refund for products not performing as stated on the datasheet
- Valid for 12 months from date of delivery
- Response to your inquiry within 24 hours
- We provide support in Chinese, English, French, German, Japanese and Spanish

- Extensive multi-media technical resources to help you
- We investigate all quality concerns to ensure our products perform to the highest standards

If the product does not perform as described on this datasheet, we will offer a refund or replacement. For full details of the Abpromise, please visit <https://www.abcam.com/abpromise> or contact our technical team.

Terms and conditions

- Guarantee only valid for products bought direct from Abcam or one of our authorized distributors