


Product datasheet

Anti-beta 1 Adrenergic Receptor antibody ab235162

1 Image

Overview

Product name	Anti-beta 1 Adrenergic Receptor antibody
Description	Rabbit polyclonal to beta 1 Adrenergic Receptor
Host species	Rabbit
Tested applications	Suitable for: WB
Species reactivity	Reacts with: Human Predicted to work with: Mouse, Rat, Rhesus monkey 
Immunogen	Synthetic peptide. This information is considered to be commercially sensitive.
Positive control	WB: Human heart muscle lysate.

Properties

Form	Liquid
Storage instructions	Shipped at 4°C. Store at +4°C short term (1-2 weeks). Upon delivery aliquot. Store at -20°C long term. Avoid freeze / thaw cycle.
Storage buffer	Preservative: 0.01% Sodium azide Constituent: PBS
Purity	Affinity purified
Clonality	Polyclonal
Isotype	IgG

Applications

Our [Abpromise guarantee](#) covers the use of **ab235162** in the following tested applications.

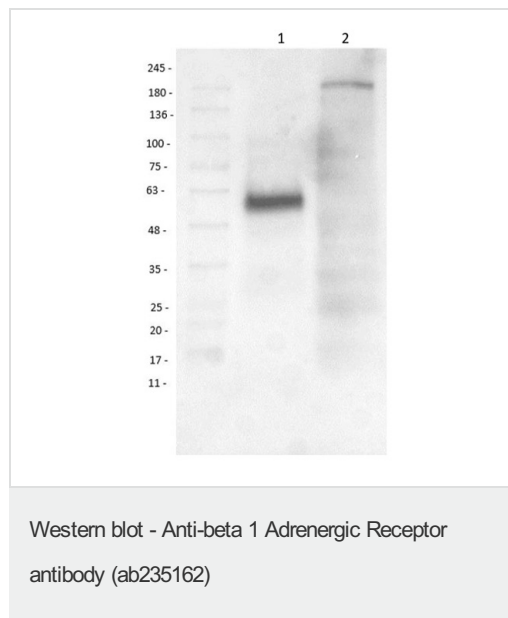
The application notes include recommended starting dilutions; optimal dilutions/concentrations should be determined by the end user.

Application	Abreviews	Notes
WB		1/1000. Predicted molecular weight: 51 kDa.

Target

Function	Beta-adrenergic receptors mediate the catecholamine-induced activation of adenylate cyclase through the action of G proteins. This receptor binds epinephrine and norepinephrine with approximately equal affinity.
Sequence similarities	Belongs to the G-protein coupled receptor 1 family. Adrenergic receptor subfamily. ADRB1 sub-subfamily.
Domain	The PDZ domain-binding motif mediates competitive interactions with GOPC, MAGI3 and DLG4 and plays a role in subcellular location of the receptor.
Post-translational modifications	Homologous desensitization of the receptor is mediated by its phosphorylation by beta-adrenergic receptor kinase.
Cellular localization	Cell membrane. Localized at the plasma membrane. Found in the Golgi upon GOPC overexpression.

Images



All lanes : Anti-beta 1 Adrenergic Receptor antibody (ab235162) at 1/1000 dilution

Lane 1 : Human heart muscle lysate

Lane 2 : K562 (Human chronic myelogenous leukemia cell line from bone marrow) cell lysate

Lysates/proteins at 35 µg per lane.

Predicted band size: 51 kDa

Exposure time: 34 seconds

Please note: All products are "FOR RESEARCH USE ONLY. NOT FOR USE IN DIAGNOSTIC PROCEDURES"

Our Abpromise to you: Quality guaranteed and expert technical support

- Replacement or refund for products not performing as stated on the datasheet
- Valid for 12 months from date of delivery
- Response to your inquiry within 24 hours
- We provide support in Chinese, English, French, German, Japanese and Spanish
- Extensive multi-media technical resources to help you
- We investigate all quality concerns to ensure our products perform to the highest standards

If the product does not perform as described on this datasheet, we will offer a refund or replacement. For full details of the Abpromise, please visit <https://www.abcam.com/abpromise> or contact our technical team.

Terms and conditions

- Guarantee only valid for products bought direct from Abcam or one of our authorized distributors