

Product datasheet

Anti-beta Actin antibody [8F10-G10] ab170325

★★★★★ 1 Abreviews 6 References 8 Images

Overview

Product name	Anti-beta Actin antibody [8F10-G10]
Description	Mouse monoclonal [8F10-G10] to beta Actin
Host species	Mouse
Tested applications	Suitable for: WB
Species reactivity	Reacts with: Mouse, Rat, Rabbit, Goat, Human, Saccharomyces cerevisiae, Drosophila melanogaster, Monkey, Zebrafish, African green monkey, Chinese hamster, Pichia pastoris
Immunogen	Full length protein corresponding to Human beta Actin. Expressed in E.coli. Database link: NM_001101
Positive control	WB: COS7, K562, HeLa, 3T3 cell lysate.
General notes	This product was changed from ascites to tissue culture supernatant on 17.08.2018. Please note that the dilutions may need to be adjusted accordingly. If you have any questions, please do not hesitate to contact our scientific support team.

Properties

Form	Liquid
Storage instructions	Shipped at 4°C. Store at +4°C short term (1-2 weeks). Upon delivery aliquot. Store at -20°C long term. Avoid freeze / thaw cycle.
Storage buffer	pH: 7.40 Preservative: 0.03% Proclin Constituent: 50% Glycerol
Purity	Concentrated Culture Supernatant
Clonality	Monoclonal
Clone number	8F10-G10
Isotype	IgG2b

Applications

Our [Abpromise guarantee](#) covers the use of **ab170325** in the following tested applications.

The application notes include recommended starting dilutions; optimal dilutions/concentrations should be determined by the end user.

Application	Abreviews	Notes
WB	★★★★☆	1/5000. Predicted molecular weight: 42 kDa.

Target

Function

Actins are highly conserved proteins that are involved in various types of cell motility and are ubiquitously expressed in all eukaryotic cells.

Involvement in disease

Defects in ACTB are a cause of dystonia juvenile-onset (DYTJ) [MIM:607371]. DYTJ is a form of dystonia with juvenile onset. Dystonia is defined by the presence of sustained involuntary muscle contraction, often leading to abnormal postures. DYTJ patients manifest progressive, generalized, dopa-unresponsive dystonia, developmental malformations and sensory hearing loss.

Sequence similarities

Belongs to the actin family.

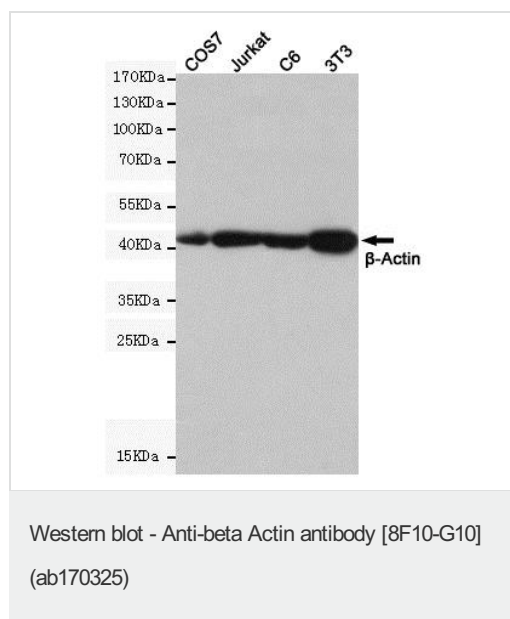
Post-translational modifications

ISGylated.

Cellular localization

Cytoplasm > cytoskeleton. Localized in cytoplasmic mRNP granules containing untranslated mRNAs.

Images



All lanes : Anti-beta Actin antibody [8F10-G10] (ab170325) at 1/5000 dilution

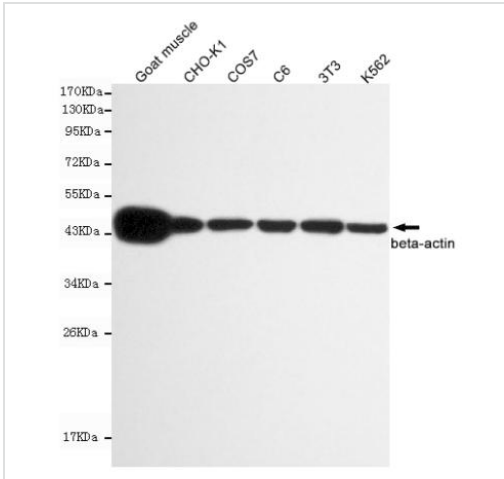
Lane 1 : COS7 cell lysate

Lane 2 : Jurkat cell lysate

Lane 3 : C6 cell lysate

Lane 4 : 3T3 cell lysate

Predicted band size: 42 kDa



Western blot - Anti-beta Actin antibody [8F10-G10] (ab170325)

All lanes : Anti-beta Actin antibody [8F10-G10] (ab170325) at 1/10000 dilution

Lane 1 : Goat muscle cell lysate

Lane 2 : CHO-K1 cell lysate

Lane 3 : COS7 cell lysate

Lane 4 : C6 cell lysate

Lane 5 : 3T3 cell lysate

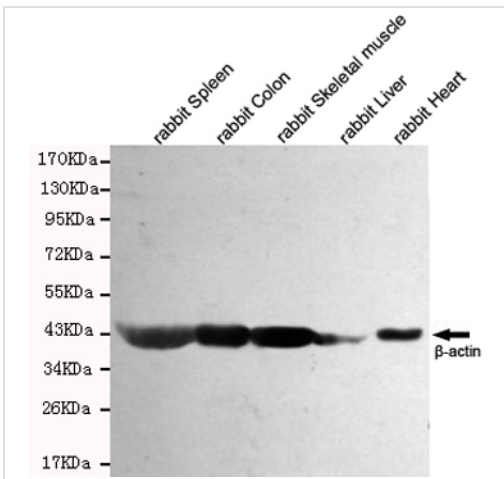
Lane 6 : K562 cell lysate

Predicted band size: 42 kDa

Observed band size: 45 kDa

[why is the actual band size different from the predicted?](#)

This image was produced with antibody produced in ascites.



Western blot - Anti-beta Actin antibody [8F10-G10] (ab170325)

All lanes :

Lane 1 : Rabbit spleen cell lysate

Lane 2 : Rabbit colon cell lysate

Lane 3 : Rabbit skeletal muscle cell lysate

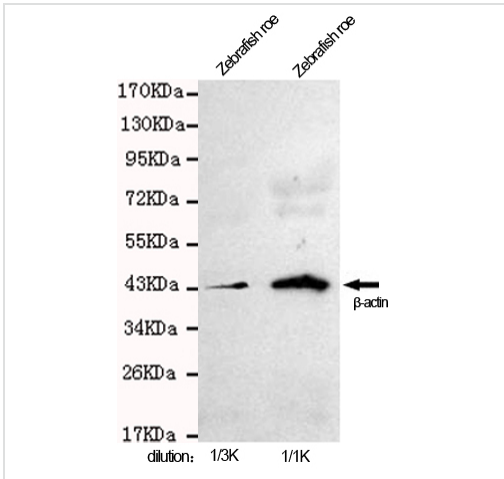
Lane 4 : Rabbit liver cell lysate

Lane 5 : Rabbit heart cell lysate

Predicted band size: 42 kDa

Observed band size: 45 kDa [why is the actual band size different from the predicted?](#)

This image was produced with antibody produced in ascites.



Western blot - Anti-beta Actin antibody [8F10-G10] (ab170325)

Lane 1 : Anti-beta Actin antibody [8F10-G10] (ab170325) at 1/3000 dilution

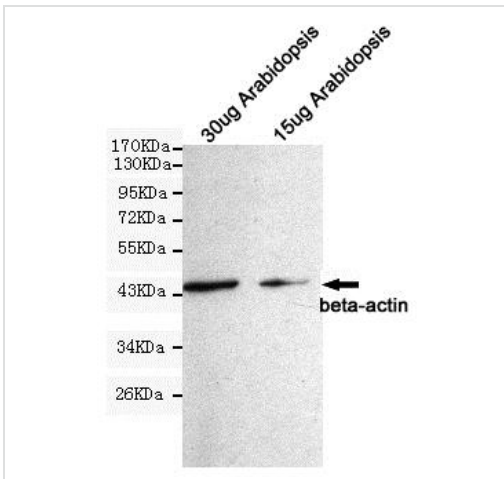
Lane 2 : Anti-beta Actin antibody [8F10-G10] (ab170325)

All lanes : Zebrafish row cell lysate

Predicted band size: 42 kDa

Observed band size: 45 kDa [why is the actual band size different from the predicted?](#)

This image was produced with antibody produced in ascites.



Western blot - Anti-beta Actin antibody [8F10-G10] (ab170325)

All lanes : Anti-beta Actin antibody [8F10-G10] (ab170325) at 1/1000 dilution

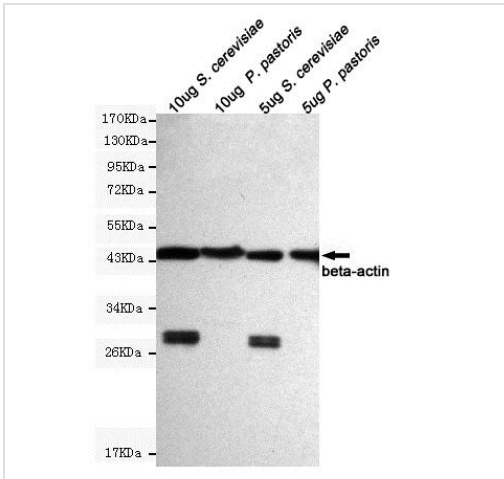
Lane 1 : Arabidopsis cell lysate at 30 μ g

Lane 2 : Arabidopsis cell lysate at 15 μ g

Predicted band size: 42 kDa

Observed band size: 45 kDa [why is the actual band size different from the predicted?](#)

This image was produced with antibody produced in ascites.



Western blot - Anti-beta Actin antibody [8F10-G10] (ab170325)

All lanes : Anti-beta Actin antibody [8F10-G10] (ab170325) at 1/5000 dilution

Lane 1 : S. cerevisiae cell lysate at 10 µg

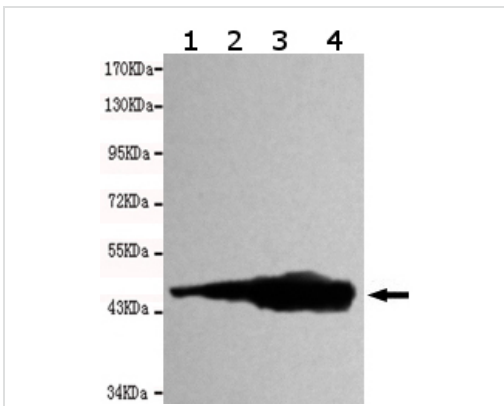
Lane 2 : P. pastoris cell lysate at 10 µg

Lane 3 : S. cerevisiae cell lysate at 5 µg

Lane 4 : P. pastoris cell lysate at 5 µg

Predicted band size: 42 kDa

Observed band size: 45 kDa [why is the actual band size different from the predicted?](#)



Western blot - Anti-beta Actin antibody [8F10-G10] (ab170325)

All lanes :

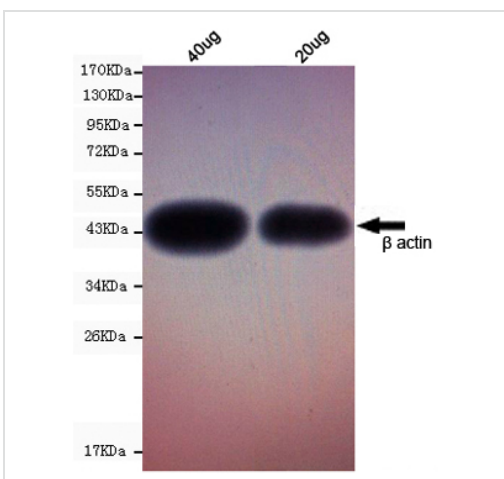
Lane 1 : COS7 cell lysate

Lane 2 : 3T3 cell lysate

Lane 3 : k562 cell lysate

Lane 4 : HeLa cell lysate

Predicted band size: 42 kDa



Western blot - Anti-beta Actin antibody [8F10-G10] (ab170325)

All lanes : Anti-beta Actin antibody [8F10-G10] (ab170325) at 1/3000 dilution

Lane 1 : Drosophila melanogaster cell lysate at 40 µg

Lane 2 : Drosophila melanogaster cell lysate at 20 µg

Predicted band size: 42 kDa

Observed band size: 45 kDa [why is the actual band size different from the predicted?](#)

Our Abpromise to you: Quality guaranteed and expert technical support

- Replacement or refund for products not performing as stated on the datasheet
- Valid for 12 months from date of delivery
- Response to your inquiry within 24 hours

- We provide support in Chinese, English, French, German, Japanese and Spanish
- Extensive multi-media technical resources to help you
- We investigate all quality concerns to ensure our products perform to the highest standards

If the product does not perform as described on this datasheet, we will offer a refund or replacement. For full details of the Abpromise, please visit <https://www.abcam.com/abpromise> or contact our technical team.

Terms and conditions

- Guarantee only valid for products bought direct from Abcam or one of our authorized distributors