

Product datasheet

Anti-beta Actin antibody ab223353

2 Images

Overview

Product name	Anti-beta Actin antibody
Description	Rabbit polyclonal to beta Actin
Host species	Rabbit
Specificity	Predicted molecular weight at ~41.7kDa. A double band may be observed.
Tested applications	Suitable for: WB, ICC/IF
Species reactivity	Reacts with: Human
Immunogen	Synthetic peptide corresponding to Human beta Actin (internal sequence). Database link: P60709
Positive control	WB: HeLa and HEK-293T lysates. ICC/IF: HeLa cells.

Properties

Form	Liquid
Storage instructions	Shipped at 4°C. Store at +4°C short term (1-2 weeks). Upon delivery aliquot. Store at -20°C long term. Avoid freeze / thaw cycle.
Storage buffer	Preservative: 0.09% Sodium azide Constituents: 50% Glycerol, PBS
Purity	Immunogen affinity purified
Clonality	Polyclonal
Isotype	IgG

Applications

Our [Abpromise guarantee](#) covers the use of **ab223353** in the following tested applications.

The application notes include recommended starting dilutions; optimal dilutions/concentrations should be determined by the end user.

Application	Abreviews	Notes
WB		1/1000. Detects a band of approximately 42 kDa (predicted molecular weight: 41.7 kDa).
ICC/IF		1/100.

Target

Function

Actins are highly conserved proteins that are involved in various types of cell motility and are ubiquitously expressed in all eukaryotic cells.

Involvement in disease

Defects in ACTB are a cause of dystonia juvenile-onset (DYTJ) [MIM:607371]. DYTJ is a form of dystonia with juvenile onset. Dystonia is defined by the presence of sustained involuntary muscle contraction, often leading to abnormal postures. DYTJ patients manifest progressive, generalized, dopa-unresponsive dystonia, developmental malformations and sensory hearing loss.

Sequence similarities

Belongs to the actin family.

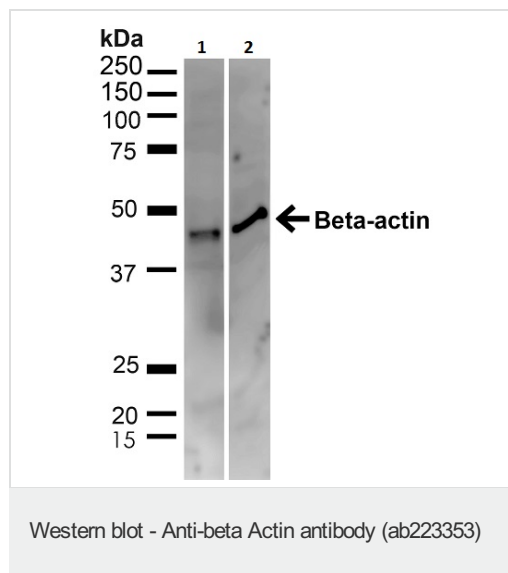
Post-translational modifications

ISGylated.

Cellular localization

Cytoplasm > cytoskeleton. Localized in cytoplasmic mRNP granules containing untranslated mRNAs.

Images



All lanes : Anti-beta Actin antibody (ab223353) at 1/1000 dilution

Lane 1 : HeLa (human epithelial cell line from cervix adenocarcinoma) cell lysate

Lane 2 : HEK-294T (human epithelial cell line from embryonic kidney transformed with large T antigen) cell lysate

Lysates/proteins at 20 µg per lane.

Secondary

All lanes : Goat anti-rabbit IgG HRP at 1/2000 dilution

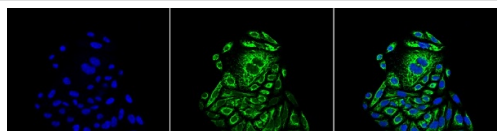
Predicted band size: 41.7 kDa

Observed band size: 42 kDa

[why is the actual band size different from the predicted?](#)

Block: 5% milk + TBST for 1 hour at RT.

Primary incubation: 1 hour at room temperature



Immunocytochemistry/ Immunofluorescence - Anti-beta Actin antibody (ab223353)

PFA-fixed HeLa (human epithelial cell line from cervix adenocarcinoma) cells stained for beta Actin (green) using ab223353 at a dilution of 1/100 in ICC/IF (centre panel). The nuclear counterstain was DAPI (blue)(left panel). The merged images are shown in the right-hand panel.

Please note: All products are "FOR RESEARCH USE ONLY. NOT FOR USE IN DIAGNOSTIC PROCEDURES"

Our Abpromise to you: Quality guaranteed and expert technical support

- Replacement or refund for products not performing as stated on the datasheet
- Valid for 12 months from date of delivery
- Response to your inquiry within 24 hours
- We provide support in Chinese, English, French, German, Japanese and Spanish
- Extensive multi-media technical resources to help you
- We investigate all quality concerns to ensure our products perform to the highest standards

If the product does not perform as described on this datasheet, we will offer a refund or replacement. For full details of the Abpromise, please visit <https://www.abcam.com/abpromise> or contact our technical team.

Terms and conditions

- Guarantee only valid for products bought direct from Abcam or one of our authorized distributors