


Product datasheet

Anti-beta Actin antibody ab228001

15 Images

Overview

Product name	Anti-beta Actin antibody
Description	Rabbit polyclonal to beta Actin
Host species	Rabbit
Tested applications	Suitable for: WB, IHC-P, ICC/IF
Species reactivity	Reacts with: Mouse, Rat, Human Predicted to work with: Sheep, Rabbit, Chicken, Cow, Dog, Xenopus laevis, Chimpanzee, Rhesus monkey 
Immunogen	Recombinant fragment within Human beta Actin. The exact sequence is proprietary. Database link: P60709
Positive control	IHC-P: Rat prostate and thymus gland tissues; Mouse thymus gland, pancreas and esophagus tissues. ICC/IF: HeLa cells. WB: NIH/3T3, HEK-293T, A431, HeLa and HepG2 whole cell lysate (ab7900).

Properties

Form	Liquid
Storage instructions	Shipped at 4°C. Store at +4°C short term (1-2 weeks). Upon delivery aliquot. Store at -20°C long term. Avoid freeze / thaw cycle.
Storage buffer	pH: 7.00 Preservative: 0.025% Proclin Constituents: PBS, 1% BSA, 20% Glycerol
Purity	Immunogen affinity purified
Clonality	Polyclonal
Isotype	IgG

Applications

Our [Abpromise guarantee](#) covers the use of **ab228001** in the following tested applications.

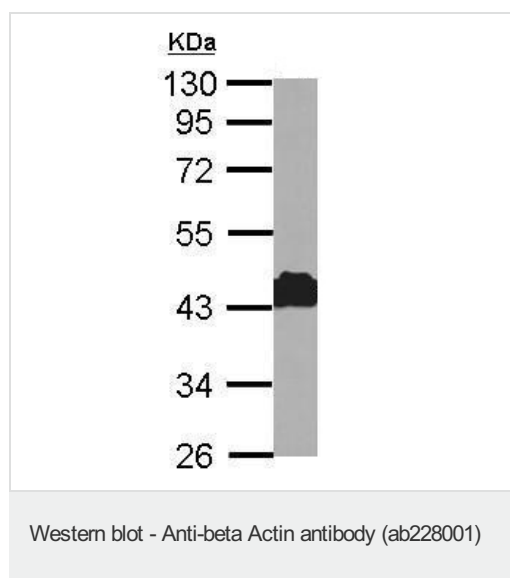
The application notes include recommended starting dilutions; optimal dilutions/concentrations should be determined by the end user.

Application	Abreviews	Notes
WB		1/5000 - 1/20000. Predicted molecular weight: 41 kDa.
IHC-P		1/100 - 1/1000.
ICC/IF		1/100 - 1/1000.

Target

Function	Actins are highly conserved proteins that are involved in various types of cell motility and are ubiquitously expressed in all eukaryotic cells.
Involvement in disease	Defects in ACTB are a cause of dystonia juvenile-onset (DYTJ) [MIM:607371]. DYTJ is a form of dystonia with juvenile onset. Dystonia is defined by the presence of sustained involuntary muscle contraction, often leading to abnormal postures. DYTJ patients manifest progressive, generalized, dopa-unresponsive dystonia, developmental malformations and sensory hearing loss.
Sequence similarities	Belongs to the actin family.
Post-translational modifications	ISGylated.
Cellular localization	Cytoplasm > cytoskeleton. Localized in cytoplasmic mRNP granules containing untranslated mRNAs.

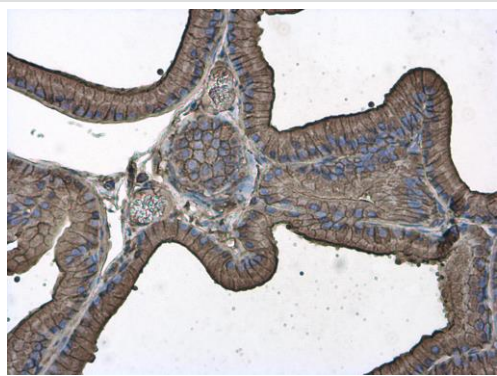
Images



Anti-beta Actin antibody (ab228001) at 1/10000 dilution + NIH/3T3 (mouse embryo fibroblast cell line) whole cell lysate at 30 µg

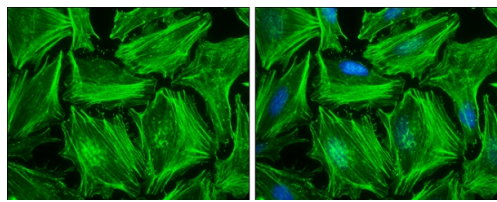
Predicted band size: 41 kDa

10% SDS-PAGE gel.



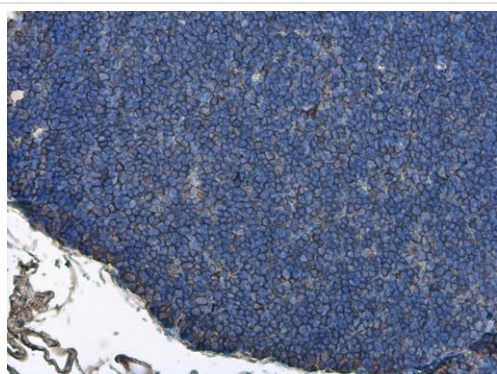
Immunohistochemistry (Formalin/PFA-fixed paraffin-embedded sections) - Anti-beta Actin antibody (ab228001)

Paraffin-embedded rat prostate tissue stained for beta Actin using ab228001 at 1/500 dilution in immunohistochemical analysis.



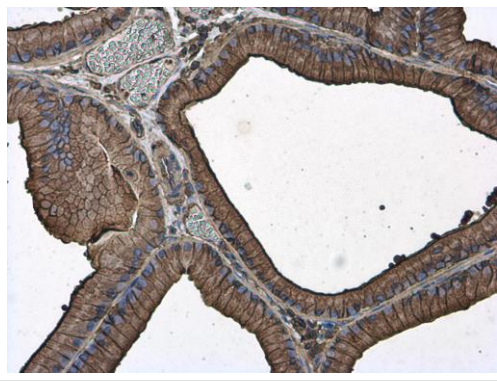
Immunocytochemistry/ Immunofluorescence - Anti-beta Actin antibody (ab228001)

HeLa (human epithelial cell line from cervix adenocarcinoma) cells stained for beta Actin antibody (green) using ab228001 at 1/500 dilution in ICC/IF. Cells were fixed in ice-cold MeOH for 5 minutes. Blue: Hoechst 33342 staining.



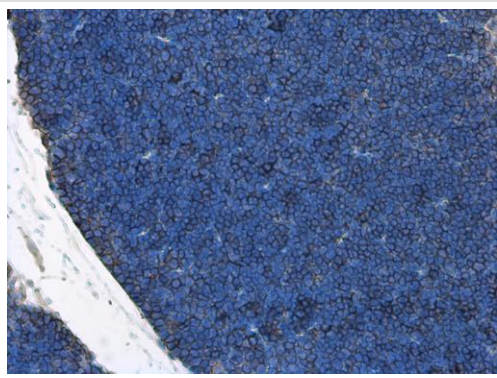
Immunohistochemistry (Formalin/PFA-fixed paraffin-embedded sections) - Anti-beta Actin antibody (ab228001)

Paraffin-embedded rat thymus gland tissue stained for beta Actin using ab228001 at 1/500 dilution in immunohistochemical analysis.



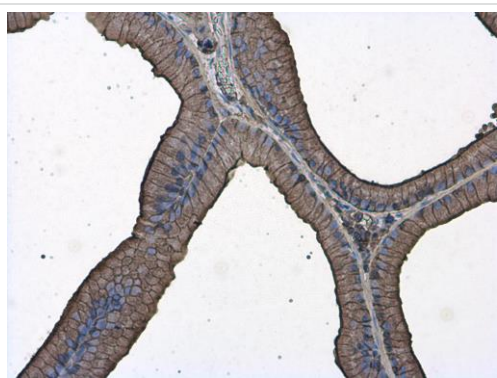
Paraffin-embedded rat prostate tissue stained for beta Actin using ab228001 at 1/500 dilution in immunohistochemical analysis.

Immunohistochemistry (Formalin/PFA-fixed paraffin-embedded sections) - Anti-beta Actin antibody (ab228001)



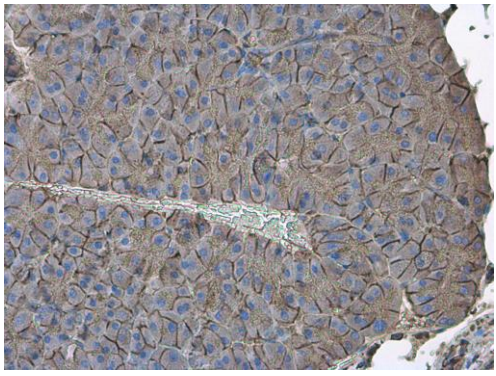
Paraffin-embedded mouse thymus gland tissue stained for beta Actin using ab228001 at 1/500 dilution in immunohistochemical analysis.

Immunohistochemistry (Formalin/PFA-fixed paraffin-embedded sections) - Anti-beta Actin antibody (ab228001)



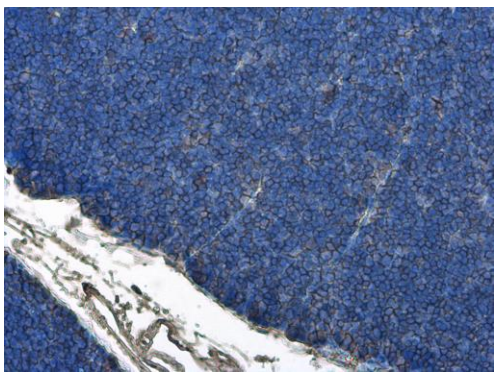
Paraffin-embedded rat prostate tissue stained for beta Actin using ab228001 at 1/500 dilution in immunohistochemical analysis.

Immunohistochemistry (Formalin/PFA-fixed paraffin-embedded sections) - Anti-beta Actin antibody (ab228001)



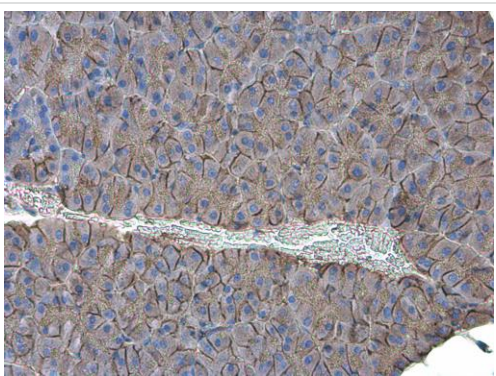
Immunohistochemistry (Formalin/PFA-fixed paraffin-embedded sections) - Anti-beta Actin antibody (ab228001)

Paraffin-embedded mouse pancreas tissue stained for beta Actin using ab228001 at 1/500 dilution in immunohistochemical analysis.



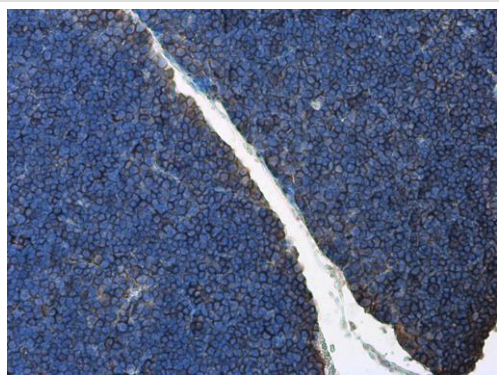
Immunohistochemistry (Formalin/PFA-fixed paraffin-embedded sections) - Anti-beta Actin antibody (ab228001)

Paraffin-embedded rat thymus gland tissue stained for beta Actin using ab228001 at 1/500 dilution in immunohistochemical analysis.



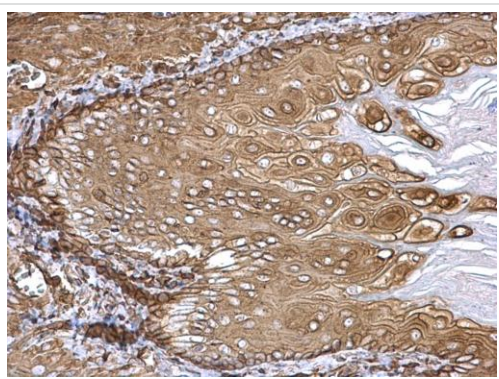
Immunohistochemistry (Formalin/PFA-fixed paraffin-embedded sections) - Anti-beta Actin antibody (ab228001)

Paraffin-embedded mouse pancreas tissue stained for beta Actin using ab228001 at 1/500 dilution in immunohistochemical analysis.



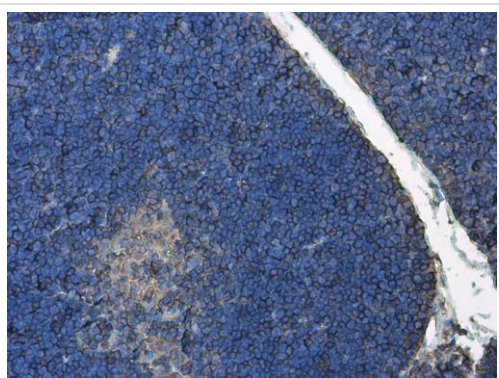
Immunohistochemistry (Formalin/PFA-fixed paraffin-embedded sections) - Anti-beta Actin antibody (ab228001)

Paraffin-embedded mouse thymus gland tissue stained for beta Actin using ab228001 at 1/500 dilution in immunohistochemical analysis.



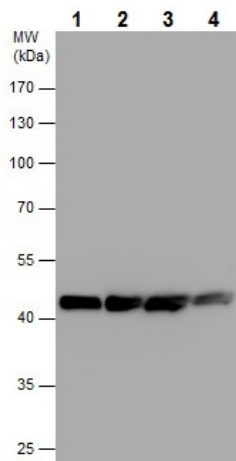
Immunohistochemistry (Formalin/PFA-fixed paraffin-embedded sections) - Anti-beta Actin antibody (ab228001)

Paraffin-embedded mouse esophagus tissue stained for beta Actin using ab228001 at 1/500 dilution in immunohistochemical analysis.



Immunohistochemistry (Formalin/PFA-fixed paraffin-embedded sections) - Anti-beta Actin antibody (ab228001)

Paraffin-embedded mouse thymus gland tissue stained for beta Actin using ab228001 at 1/500 dilution in immunohistochemical analysis.



Western blot - Anti-beta Actin antibody (ab228001)

All lanes : Anti-beta Actin antibody (ab228001) at 1/10000 dilution

Lane 1 : HEK-293T (human epithelial cell line from embryonic kidney transformed with large T antigen) whole cell extract

Lane 2 : A431 (human epidermoid carcinoma cell line) whole cell extract

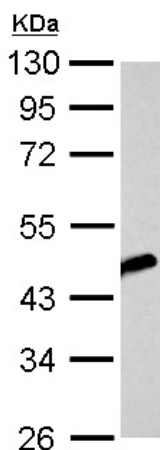
Lane 3 : HeLa (human epithelial cell line from cervix adenocarcinoma) whole cell extract

Lane 4 : HepG2 (human liver hepatocellular carcinoma cell line) whole cell extract

Lysates/proteins at 30 µg per lane.

Predicted band size: 41 kDa

10% SDS-PAGE gel.



Western blot - Anti-beta Actin antibody (ab228001)

Anti-beta Actin antibody (ab228001) at 1/10000 dilution + HEK-293T (human epithelial cell line from embryonic kidney transformed with large T antigen) whole cell lysate at 1 µg

Predicted band size: 41 kDa

10 % SDS-PAGE gel.

Please note: All products are "FOR RESEARCH USE ONLY. NOT FOR USE IN DIAGNOSTIC PROCEDURES"

Our Abpromise to you: Quality guaranteed and expert technical support

- Replacement or refund for products not performing as stated on the datasheet
- Valid for 12 months from date of delivery
- Response to your inquiry within 24 hours
- We provide support in Chinese, English, French, German, Japanese and Spanish
- Extensive multi-media technical resources to help you

- We investigate all quality concerns to ensure our products perform to the highest standards

If the product does not perform as described on this datasheet, we will offer a refund or replacement. For full details of the Abpromise, please visit <https://www.abcam.com/abpromise> or contact our technical team.

Terms and conditions

- Guarantee only valid for products bought direct from Abcam or one of our authorized distributors