




Product datasheet

Anti-beta Arrestin 1 antibody ab231628

8 Images

Overview

Product name	Anti-beta Arrestin 1 antibody
Description	Rabbit polyclonal to beta Arrestin 1
Host species	Rabbit
Tested applications	Suitable for: IHC-P, WB
Species reactivity	Reacts with: Human, Pig Predicted to work with: Mouse, Rat, Cow, Cynomolgus monkey 
Immunogen	Recombinant fragment (His-T7-tag) corresponding to Human beta Arrestin 1 aa 3-246. (Expressed in E.coli). Sequence: DKGTRVFKKASPNGKLTVYLGKRDFVDHIDLVDPVVDG VVLVDPEYLKERR VYVTLTCAFRYGREDLDVLGLTFRKDLFVANVQSFPF APEDKKPLTRLQE RLIKKLGEHAYPFTFEIPPNLPCSVTLQPGPEDTGKAC GVDYEVKAFCAE NLEEKIHKRNSVRLVIRKVQYAPERPGPQPTAETTRQF LMSDKPLHLEAS LDKEIYHGEPISVNVHV TNNTNKT VKKIKISVRQYADICL FNT Database link: P49407  Run BLAST with  Run BLAST with
Positive control	WB: Pig brain tissue: Recombinant human beta Arrestin 1 protein. IHC-P: Human liver, skin cancer, prostate, kidney, breast cancer and prostate cancer tissues.

Properties

Form	Liquid
Storage instructions	Shipped at 4°C. Store at +4°C short term (1-2 weeks). Upon delivery aliquot. Store at -20°C long term. Avoid freeze / thaw cycle.
Storage buffer	pH: 7.4 Preservative: 0.02% Sodium azide

	Constituents: PBS, 50% Glycerol
Purity	Immunogen affinity purified
Purification notes	Antigen-specific affinity chromatography followed by Protein A affinity chromatography.
Clonality	Polyclonal
Isotype	IgG

Applications

Our [Abpromise guarantee](#) covers the use of **ab231628** in the following tested applications.

The application notes include recommended starting dilutions; optimal dilutions/concentrations should be determined by the end user.

Application	Abreviews	Notes
IHC-P		Use a concentration of 5 - 20 µg/ml.
WB		Use a concentration of 0.5 - 5 µg/ml. Predicted molecular weight: 47 kDa.

Target

Function

Functions in regulating agonist-mediated G-protein coupled receptor (GPCR) signaling by mediating both receptor desensitization and resensitization processes. During homologous desensitization, beta-arrestins bind to the GPRK-phosphorylated receptor and sterically preclude its coupling to the cognate G-protein; the binding appears to require additional receptor determinants exposed only in the active receptor conformation. The beta-arrestins target many receptors for internalization by acting as endocytic adapters (CLASPs, clathrin-associated sorting proteins) and recruiting the GPCRs to the adapter protein 2 complex 2 (AP-2) in clathrin-coated pits (CCPs). However, the extent of beta-arrestin involvement appears to vary significantly depending on the receptor, agonist and cell type. Internalized arrestin-receptor complexes traffic to intracellular endosomes, where they remain uncoupled from G-proteins. Two different modes of arrestin-mediated internalization occur. Class A receptors, like ADRB2, OPRM1, ENDR1, D1AR and ADRA1B dissociate from beta-arrestin at or near the plasma membrane and undergo rapid recycling. Class B receptors, like AVPR2, AGTR1, NTSR1, TRHR and TACR1 internalize as a complex with arrestin and traffic with it to endosomal vesicles, presumably as desensitized receptors, for extended periods of time. Receptor resensitization then requires that receptor-bound arrestin is removed so that the receptor can be dephosphorylated and returned to the plasma membrane. Involved in internalization of P2RY4 and UTP-stimulated internalization of P2RY2. Involved in phosphorylation-dependent internalization of OPRD1 and subsequent recycling. Involved in the degradation of cAMP by recruiting cAMP phosphodiesterases to ligand-activated receptors. Beta-arrestins function as multivalent adapter proteins that can switch the GPCR from a G-protein signaling mode that transmits short-lived signals from the plasma membrane via small molecule second messengers and ion channels to a beta-arrestin signaling mode that transmits a distinct set of signals that are initiated as the receptor internalizes and transits the intracellular compartment. Acts as signaling scaffold for MAPK pathways such as MAPK1/3 (ERK1/2). ERK1/2 activated by the beta-arrestin scaffold is largely excluded from the nucleus and confined to cytoplasmic locations such as endocytic vesicles, also called beta-arrestin signalosomes. Recruits c-Src/SRC to ADRB2 resulting in ERK activation. GPCRs for which the beta-arrestin-mediated signaling relies on both ARRB1 and ARRB2 (codependent regulation) include ADRB2, F2RL1 and PTH1R. For some GPCRs the beta-arrestin-mediated

signaling relies on either ARRB1 or ARRB2 and is inhibited by the other respective beta-arrestin form (reciprocal regulation). Inhibits ERK1/2 signaling in AGTR1- and AVPR2-mediated activation (reciprocal regulation). Is required for SP-stimulated endocytosis of NK1R and recruits c-Src/SRC to internalized NK1R resulting in ERK1/2 activation, which is required for the antiapoptotic effects of SP. Is involved in proteinase-activated F2RL1-mediated ERK activity. Acts as signaling scaffold for the AKT1 pathway. Is involved in alpha-thrombin-stimulated AKT1 signaling. Is involved in IGF1-stimulated AKT1 signaling leading to increased protection from apoptosis. Involved in activation of the p38 MAPK signaling pathway and in actin bundle formation. Involved in F2RL1-mediated cytoskeletal rearrangement and chemotaxis. Involved in AGTR1-mediated stress fiber formation by acting together with GNAQ to activate RHOA. Appears to function as signaling scaffold involved in regulation of MIP-1-beta-stimulated CCR5-dependent chemotaxis. Involved in attenuation of NF-kappa-B-dependent transcription in response to GPCR or cytokine stimulation by interacting with and stabilizing CHUK. May serve as nuclear messenger for GPCRs. Involved in OPRD1-stimulated transcriptional regulation by translocating to CDKN1B and FOS promoter regions and recruiting EP300 resulting in acetylation of histone H4. Involved in regulation of LEF1 transcriptional activity via interaction with DVL1 and/or DVL2 Also involved in regulation of receptors others than GPCRs. Involved in Toll-like receptor and IL-1 receptor signaling through the interaction with TRAF6 which prevents TRAF6 autoubiquitination and oligomerization required for activation of NF-kappa-B and JUN. Binds phosphoinositides. Binds inositolhexakisphosphate (InsP6).

Sequence similarities

Belongs to the arrestin family.

Domain

The [DE]-X(1,2)-F-X-X-[FL]-X-X-X-R motif mediates interaction the AP-2 complex subunit AP2B1 (By similarity). Binding to phosphorylated GPCRs induces a conformational change that exposes the motif to the surface.

The N-terminus binds InsP6 with low affinity.

The C-terminus binds InsP6 with high affinity.

Post-translational modifications

Constitutively phosphorylated at Ser-412 in the cytoplasm. At the plasma membrane, is rapidly dephosphorylated, a process that is required for clathrin binding and ADRB2 endocytosis but not for ADRB2 binding and desensitization. Once internalized, is rephosphorylated.

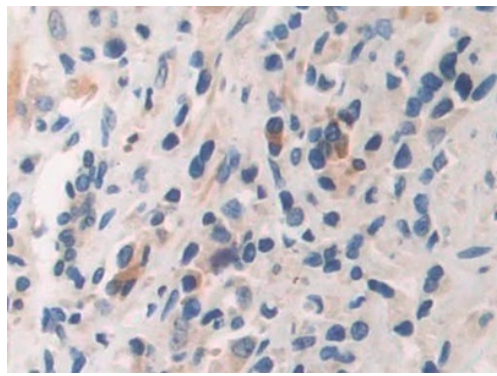
The ubiquitination status appears to regulate the formation and trafficking of beta-arrestin-GPCR complexes and signaling. Ubiquitination appears to occur GPCR-specific. Ubiquitinated by MDM2; the ubiquitination is required for rapid internalization of ADRB2. Deubiquitinated by USP33; the deubiquitination leads to a dissociation of the beta-arrestin-GPCR complex.

Stimulation of a class A GPCR, such as ADRB2, induces transient ubiquitination and subsequently promotes association with USP33.

Cellular localization

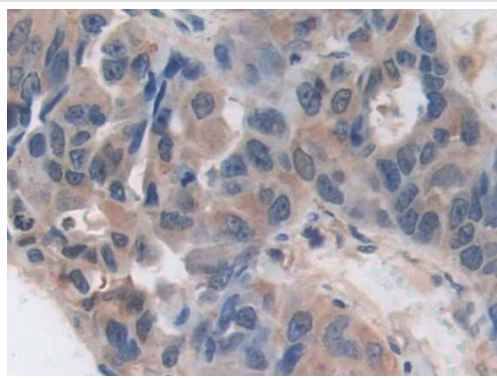
Cytoplasm. Nucleus. Cell membrane. Membrane > clathrin-coated pit. Cell projection > pseudopodium. Cytoplasmic vesicle. Translocates to the plasma membrane and colocalizes with antagonist-stimulated GPCRs. The monomeric form is predominantly located in the nucleus. The oligomeric form is located in the cytoplasm. Translocates to the nucleus upon stimulation of OPRD1.

Images



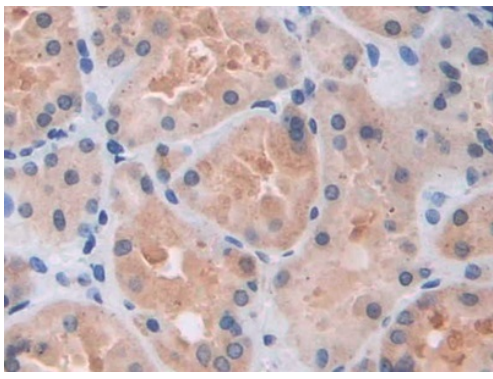
Immunohistochemistry (Formalin/PFA-fixed paraffin-embedded sections) - Anti-beta Arrestin 1 antibody (ab231628)

Formalin-fixed, paraffin-embedded human prostate cancer tissue stained for beta Arrestin 1 using ab231628 at 20 $\mu\text{g}/\text{mL}$ in immunohistochemical analysis. DAB staining.



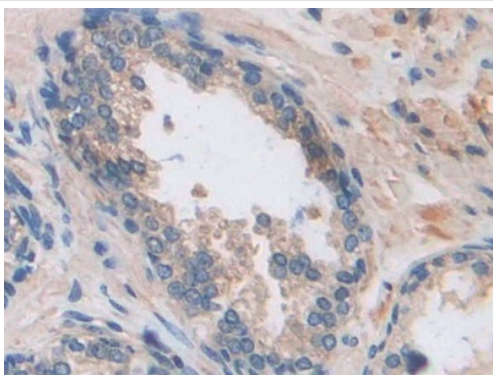
Immunohistochemistry (Formalin/PFA-fixed paraffin-embedded sections) - Anti-beta Arrestin 1 antibody (ab231628)

Formalin-fixed, paraffin-embedded human breast cancer tissue stained for beta Arrestin 1 using ab231628 at 20 $\mu\text{g}/\text{mL}$ in immunohistochemical analysis. DAB staining.



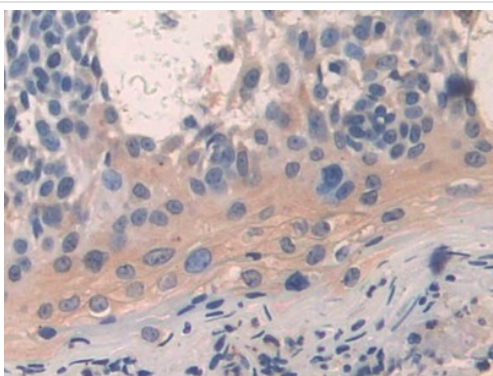
Immunohistochemistry (Formalin/PFA-fixed paraffin-embedded sections) - Anti-beta Arrestin 1 antibody (ab231628)

Formalin-fixed, paraffin-embedded human kidney tissue stained for beta Arrestin 1 using ab231628 at 20 $\mu\text{g}/\text{mL}$ in immunohistochemical analysis. DAB staining.



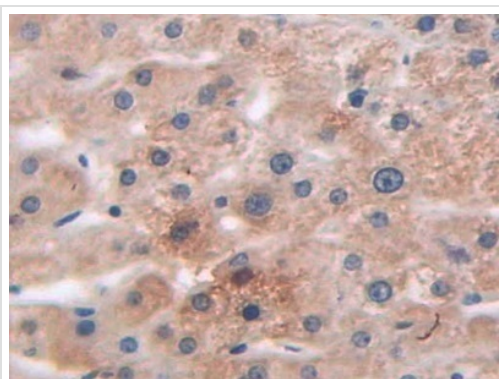
Immunohistochemistry (Formalin/PFA-fixed paraffin-embedded sections) - Anti-beta Arrestin 1 antibody (ab231628)

Formalin-fixed, paraffin-embedded human prostate tissue stained for beta Arrestin 1 using ab231628 at 20 $\mu\text{g}/\text{mL}$ in immunohistochemical analysis. DAB staining.



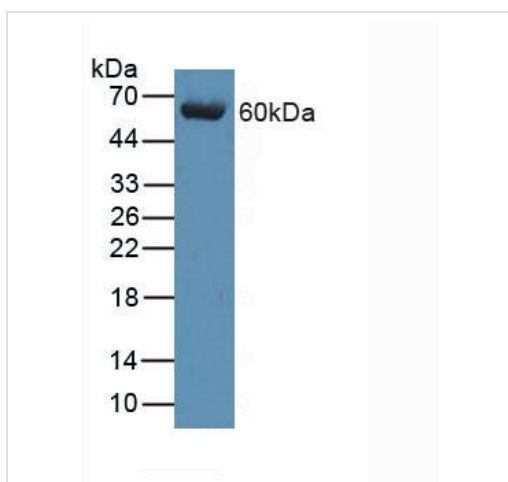
Immunohistochemistry (Formalin/PFA-fixed paraffin-embedded sections) - Anti-beta Arrestin 1 antibody (ab231628)

Formalin-fixed, paraffin-embedded human skin cancer tissue stained for beta Arrestin 1 using ab231628 at 20 $\mu\text{g}/\text{mL}$ in immunohistochemical analysis. DAB staining.



Immunohistochemistry (Formalin/PFA-fixed paraffin-embedded sections) - Anti-beta Arrestin 1 antibody (ab231628)

Formalin-fixed, paraffin-embedded human liver tissue stained for beta Arrestin 1 using ab231628 at 20 µg/mL in immunohistochemical analysis. DAB staining.



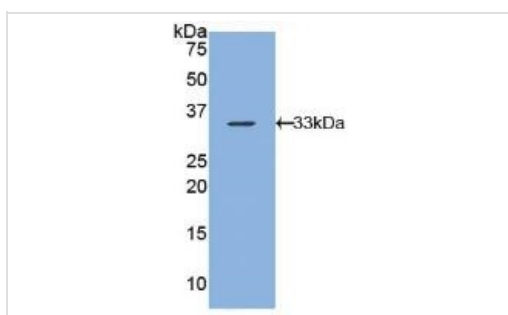
Western blot - Anti-beta Arrestin 1 antibody (ab231628)

Anti-beta Arrestin 1 antibody (ab231628) at 3 µg/ml + Pig brain tissue lysate

Secondary

HRP-Linked Guinea pig Anti-Rabbit at 1/2000 dilution

Predicted band size: 47 kDa



Western blot - Anti-beta Arrestin 1 antibody (ab231628)

Anti-beta Arrestin 1 antibody (ab231628) at 3 µg/ml + Recombinant human beta Arrestin 1 protein

Predicted band size: 47 kDa

Our Abpromise to you: Quality guaranteed and expert technical support

- Replacement or refund for products not performing as stated on the datasheet
- Valid for 12 months from date of delivery
- Response to your inquiry within 24 hours

- We provide support in Chinese, English, French, German, Japanese and Spanish
- Extensive multi-media technical resources to help you
- We investigate all quality concerns to ensure our products perform to the highest standards

If the product does not perform as described on this datasheet, we will offer a refund or replacement. For full details of the Abpromise, please visit <https://www.abcam.com/abpromise> or contact our technical team.

Terms and conditions

- Guarantee only valid for products bought direct from Abcam or one of our authorized distributors