

## Product datasheet

# Anti-beta Casein antibody [EPR12179] ab205301

Recombinant RabMAb

★★★★☆ 1 Abreviews 1 References 3 Images

### Overview

<b>Product name</b>	Anti-beta Casein antibody [EPR12179]
<b>Description</b>	Rabbit monoclonal [EPR12179] to beta Casein
<b>Host species</b>	Rabbit
<b>Tested applications</b>	<b>Suitable for:</b> IP, WB
<b>Species reactivity</b>	<b>Reacts with:</b> Human
<b>Immunogen</b>	Synthetic peptide. This information is proprietary to Abcam and/or its suppliers.
<b>Positive control</b>	Human milk lysate.
<b>General notes</b>	

This product is a recombinant monoclonal antibody, which offers several advantages including:

- High batch-to-batch consistency and reproducibility
- Improved sensitivity and specificity
- Long-term security of supply
- Animal-free production

For more information [see here](#).

Our RabMAb<sup>®</sup> technology is a patented hybridoma-based technology for making rabbit monoclonal antibodies. For details on our patents, please refer to [RabMAb<sup>®</sup> patents](#).

### Properties

<b>Form</b>	Liquid
<b>Storage instructions</b>	Shipped at 4°C. Store at +4°C short term (1-2 weeks). Upon delivery aliquot. Store at -20°C long term. Avoid freeze / thaw cycle.
<b>Storage buffer</b>	pH: 7.2 Preservative: 0.01% Sodium azide Constituents: 59% PBS, 40% Glycerol (glycerin, glycerine), 0.05% BSA
<b>Purity</b>	Protein A purified
<b>Clonality</b>	Monoclonal
<b>Clone number</b>	EPR12179

Isotype

IgG

## Applications

### The Abpromise guarantee

Our [Abpromise guarantee](#) covers the use of ab205301 in the following tested applications.

The application notes include recommended starting dilutions; optimal dilutions/concentrations should be determined by the end user.

Application	Abreviews	Notes
IP		1/60.
WB	★★★★★ (1)	1/1000. Detects a band of approximately 25 kDa (predicted molecular weight: 25 kDa).

## Target

### Function

Important role in determination of the surface properties of the casein micelles.

### Tissue specificity

Mammary gland specific. Secreted in milk.

### Sequence similarities

Belongs to the beta-casein family.

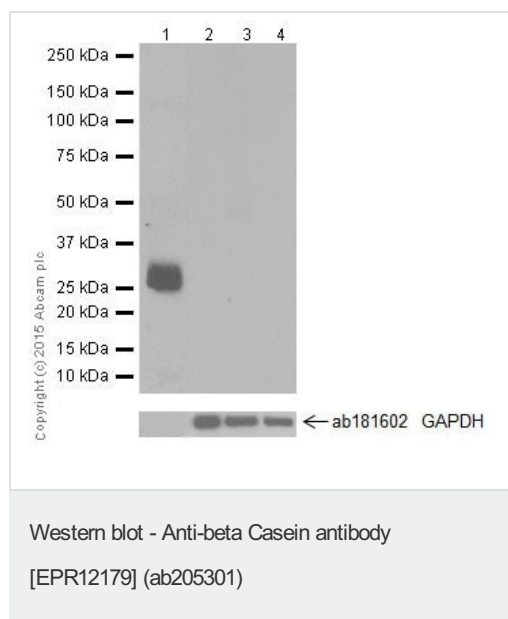
### Post-translational modifications

Form 1-P is phosphorylated once; half of the molecules are phosphorylated on Ser-24, half on Ser-25.

### Cellular localization

Secreted.

## Images



**All lanes** : Anti-beta Casein antibody [EPR12179] (ab205301) at 1/1000 dilution

**Lane 1** : Human milk lysate

**Lane 2** : Human fetal brain lysate

**Lane 3** : Human fetal heart lysate

**Lane 4** : Human fetal kidney lysate

Lysates/proteins at 10 µg per lane.

### Secondary

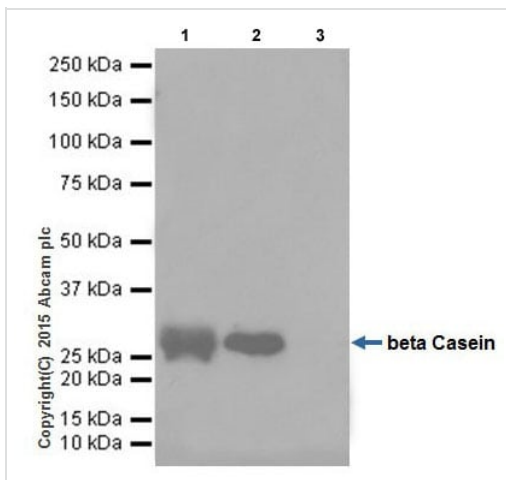
**All lanes** : Anti-Rabbit IgG (HRP), specific to the non-reduced form of IgG at 1/10000 dilution

**Predicted band size:** 25 kDa

**Observed band size:** 25 kDa

**Exposure time:** 5 seconds

Blocking/Dilution buffer: 5% NFDm/TBST.



Immunoprecipitation - Anti-beta Casein antibody  
[EPR12179] (ab205301)

beta Casein was immunoprecipitated from 1 mg of Human milk lysate with ab205301 at 1/60 dilution. Western blot was performed from the immunoprecipitate using ab205301 at 1/1000 dilution. VeriBlot for IP Detection Reagent (HRP) (ab131366) was used for detection at 1/10000 dilution.

Lane 1: Human milk lysate 10 µg (Input). Lane 2: ab205301 IP in Human milk lysate. Lane 3: Rabbit monoclonal IgG (ab172730) instead of ab205301 in Human milk lysate.

Blocking and dilution buffer and concentration: 5% NFDm/TBST.

Exposure time: 30 seconds

Why choose a recombinant antibody?

- Research with confidence**  
Consistent and reproducible results
- Long-term and scalable supply**  
Recombinant technology
- Success from the first experiment**  
Confirmed specificity
- Ethical standards compliant**  
Animal-free production

Anti-beta Casein antibody [EPR12179] (ab205301)

**Please note:** All products are "FOR RESEARCH USE ONLY. NOT FOR USE IN DIAGNOSTIC PROCEDURES"

### Our Abpromise to you: Quality guaranteed and expert technical support

- Replacement or refund for products not performing as stated on the datasheet
- Valid for 12 months from date of delivery
- Response to your inquiry within 24 hours
- We provide support in Chinese, English, French, German, Japanese and Spanish
- Extensive multi-media technical resources to help you

- We investigate all quality concerns to ensure our products perform to the highest standards

If the product does not perform as described on this datasheet, we will offer a refund or replacement. For full details of the Abpromise, please visit <https://www.abcam.com/abpromise> or contact our technical team.

### **Terms and conditions**

---

- Guarantee only valid for products bought direct from Abcam or one of our authorized distributors