




## Product datasheet

# Anti-Beta crystallin S antibody ab229949

3 Images

### Overview

<b>Product name</b>	Anti-Beta crystallin S antibody
<b>Description</b>	Rabbit polyclonal to Beta crystallin S
<b>Host species</b>	Rabbit
<b>Tested applications</b>	<b>Suitable for:</b> IHC-P, WB
<b>Species reactivity</b>	<b>Reacts with:</b> Mouse, Human <b>Predicted to work with:</b> Rabbit, Cow, Dog 
<b>Immunogen</b>	Recombinant full length protein corresponding to Human Beta crystallin S aa 1-178. Sequence: MSKTGKTKITFYEDKNFQGRRYDCDCDCADFHTYLSRCNSI KVEGGTWAVY ERPINFAGYMYLPQGEYPEYQRWMGLNDRLLSSCRAVHLP SGGQYKIQIFE KGDFSGQMYETTEDCPSIMEQFHMREIHSCKVLEGVWIFY ELPNYRGRQYLLDKKEYRKPIDWGAASPAVQSFRRIVE  Database link: <a href="#">P22914</a>   <a href="#">Run BLAST with</a>  <a href="#">Run BLAST with</a>
<b>Positive control</b>	WB: Mouse eye lysate. IHC-P: Human lung cancer and gastric cancer tissues.
<b>General notes</b>	<p>Reproducibility is key to advancing scientific discovery and accelerating scientists' next breakthrough.</p> <p>Abcam is leading the way with our range of recombinant antibodies, knockout-validated antibodies and knockout cell lines, all of which support improved reproducibility.</p> <p>We are also planning to innovate the way in which we present recommended applications and species on our product datasheets, so that only applications &amp; species that have been tested in our own labs, our suppliers or by selected trusted collaborators are covered by our Abpromise™ guarantee.</p> <p>In preparation for this, we have started to update the applications &amp; species that this product is Abpromise guaranteed for.</p> <p>We are also updating the applications &amp; species that this product has been “predicted to work with,” however this information is not covered by our Abpromise guarantee.</p> <p>Applications &amp; species from publications and Abreviews that have not been tested in our own labs or in those of our suppliers are not covered by the Abpromise guarantee.</p>

Please check that this product meets your needs before purchasing. If you have any questions, special requirements or concerns, please send us an inquiry and/or contact our Support team ahead of purchase. Recommended alternatives for this product can be found below, as well as customer reviews and Q&As.

## Properties

---

<b>Form</b>	Liquid
<b>Storage instructions</b>	Shipped at 4°C. Store at +4°C short term (1-2 weeks). Upon delivery aliquot. Store at -20°C long term. Avoid freeze / thaw cycle.
<b>Storage buffer</b>	pH: 7.30 Preservative: 0.02% Sodium azide Constituents: PBS, 50% Glycerol (glycerin, glycerine)
<b>Purity</b>	Immunogen affinity purified
<b>Clonality</b>	Polyclonal
<b>Isotype</b>	IgG

## Applications

---

Our [Abpromise guarantee](#) covers the use of **ab229949** in the following tested applications.

The application notes include recommended starting dilutions; optimal dilutions/concentrations should be determined by the end user.

Application	Abreviews	Notes
IHC-P		1/20 - 1/200.
WB		1/1000 - 1/5000. Detects a band of approximately 21 kDa (predicted molecular weight: 21 kDa).

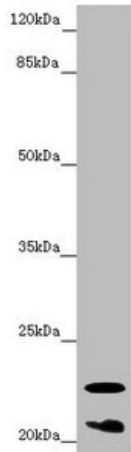
## Target

---

<b>Function</b>	Crystallins are the dominant structural components of the vertebrate eye lens.
<b>Sequence similarities</b>	Belongs to the beta/gamma-crystallin family. Contains 4 beta/gamma crystallin 'Greek key' domains.
<b>Domain</b>	Has a two-domain beta-structure, folded into four very similar Greek key motifs.

## Images

---



Western blot - Anti-Beta crystallin S antibody (ab229949)

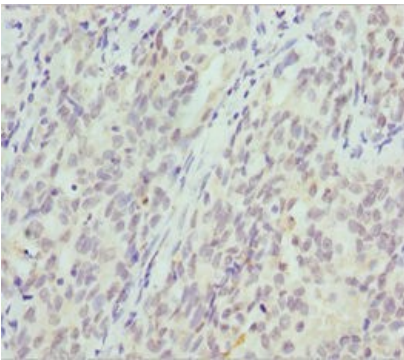
Anti-Beta crystallin S antibody (ab229949) at 1/1000 dilution +  
Mouse eye lysate

**Secondary**

Goat anti-rabbit IgG at 1/10000 dilution

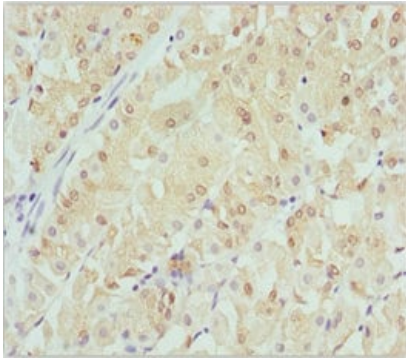
**Predicted band size:** 21 kDa

**Observed band size:** 21 kDa



Immunohistochemistry (Formalin/PFA-fixed paraffin-embedded sections) - Anti-Beta crystallin S antibody (ab229949)

Paraffin-embedded human lung cancer tissue stained for Beta crystallin S using ab229949 at 1/100 dilution in immunohistochemical analysis.



Paraffin-embedded human gastric cancer tissue stained for Beta crystallin S using ab229949 at 1/100 dilution in immunohistochemical analysis.

Immunohistochemistry (Formalin/PFA-fixed paraffin-embedded sections) - Anti-Beta crystallin S antibody (ab229949)

**Please note:** All products are "FOR RESEARCH USE ONLY. NOT FOR USE IN DIAGNOSTIC PROCEDURES"

### **Our Abpromise to you: Quality guaranteed and expert technical support**

---

- Replacement or refund for products not performing as stated on the datasheet
- Valid for 12 months from date of delivery
- Response to your inquiry within 24 hours
  
- We provide support in Chinese, English, French, German, Japanese and Spanish
- Extensive multi-media technical resources to help you
- We investigate all quality concerns to ensure our products perform to the highest standards

If the product does not perform as described on this datasheet, we will offer a refund or replacement. For full details of the Abpromise, please visit <https://www.abcam.com/abpromise> or contact our technical team.

### **Terms and conditions**

---

- Guarantee only valid for products bought direct from Abcam or one of our authorized distributors