


Product datasheet

Anti-beta Defensin 1 antibody [M11-14b-D10] ab14425

9 References 1 Image

Overview

Product name	Anti-beta Defensin 1 antibody [M11-14b-D10]
Description	Mouse monoclonal [M11-14b-D10] to beta Defensin 1
Host species	Mouse
Tested applications	Suitable for: WB, ELISA, IHC-P
Species reactivity	Reacts with: Human Predicted to work with: Chimpanzee, Baboon, Macaque monkey 
Immunogen	Synthetic peptide: DHYNCVSSGGQCLYSACPIFTKIQGTCYRGKAKCCK , corresponding to amino acids 1-36 of Human beta 1 Defensin. Run BLAST with Run BLAST with
General notes	The Life Science industry has been in the grips of a reproducibility crisis for a number of years. Abcam is leading the way in addressing this with our range of recombinant monoclonal antibodies and knockout edited cell lines for gold-standard validation. Please check that this product meets your needs before purchasing. If you have any questions, special requirements or concerns, please send us an inquiry and/or contact our Support team ahead of purchase. Recommended alternatives for this product can be found below, along with publications, customer reviews and Q&As

Properties

Form	Liquid
Storage instructions	Shipped at 4°C. Upon delivery aliquot and store at -20°C. Avoid freeze / thaw cycles.
Storage buffer	pH: 7.40 Constituent: 0.79% Tris HCl
Purity	Protein L purified
Clonality	Monoclonal
Clone number	M11-14b-D10
Isotype	IgG1

Applications

The Abpromise guarantee

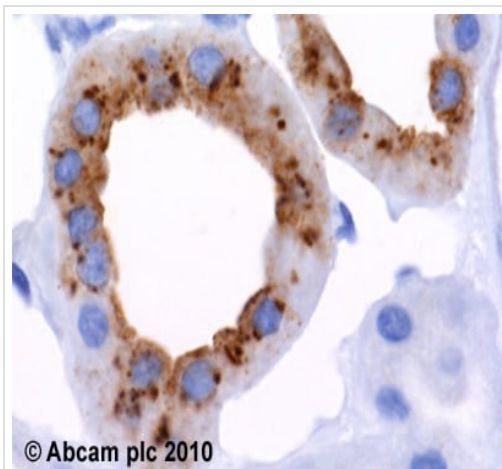
Our [Abpromise guarantee](#) covers the use of ab14425 in the following tested applications.

The application notes include recommended starting dilutions; optimal dilutions/concentrations should be determined by the end user.

Application	Abreviews	Notes
WB		Use at an assay dependent concentration. Can be blocked with Recombinant human beta Defensin 1 protein (ab50048) .
ELISA		Use at an assay dependent concentration.
IHC-P		Use a concentration of 2 µg/ml.

Target

Function	Has bactericidal activity.
Tissue specificity	Plasma.
Sequence similarities	Belongs to the beta-defensin family.
Cellular localization	Secreted.

Images

Immunohistochemistry (Formalin/PFA-fixed paraffin-embedded sections) - Anti-beta Defensin 1 antibody [M11-14b-D10] (ab14425)

ab14425 (2µg/ml) staining beta defensin in human kidney, using an automated system (DAKO Autostainer Plus). Using this protocol there is strong staining in the epithelial layers of the loops of Henle, distal tubules and collecting ducts.

Sections were rehydrated and antigen retrieved with the Dako 3 in 1 AR buffer EDTA pH 9.0 in a DAKO PT link. Slides were peroxidase blocked in 3% H₂O₂ in methanol for 10 mins. They were then blocked with Dako Protein block for 10 minutes (containing casein 0.25% in PBS) then incubated with primary antibody for 20 min and detected with Dako envision flex amplification kit for 30 minutes. Colorimetric detection was completed with Diaminobenzidine for 5 minutes. Slides were counterstained with Haematoxylin and coverslipped under DePeX. Please note that, for manual staining, optimization of primary antibody concentration and incubation time is recommended. Signal amplification may be required.

Please note: All products are "FOR RESEARCH USE ONLY. NOT FOR USE IN DIAGNOSTIC PROCEDURES"

Our Abpromise to you: Quality guaranteed and expert technical support

- Replacement or refund for products not performing as stated on the datasheet
- Valid for 12 months from date of delivery
- Response to your inquiry within 24 hours

- We provide support in Chinese, English, French, German, Japanese and Spanish
- Extensive multi-media technical resources to help you
- We investigate all quality concerns to ensure our products perform to the highest standards

If the product does not perform as described on this datasheet, we will offer a refund or replacement. For full details of the Abpromise, please visit <https://www.abcam.com/abpromise> or contact our technical team.

Terms and conditions

- Guarantee only valid for products bought direct from Abcam or one of our authorized distributors