


Product datasheet

Anti-beta II Tubulin antibody ab151318

18 References 4 Images

Overview

<b>Product name</b>	Anti-beta II Tubulin antibody
<b>Description</b>	Rabbit polyclonal to beta II Tubulin
<b>Host species</b>	Rabbit
<b>Tested applications</b>	<b>Suitable for:</b> IHC-P, WB, ICC/IF
<b>Species reactivity</b>	<b>Reacts with:</b> Mouse, Human <b>Predicted to work with:</b> Rat, Chicken, Cow, Xenopus laevis, Monkey, Zebrafish, Xenopus tropicalis 
<b>Immunogen</b>	A recombinant protein fragment corresponding to a region within amino acids 243 and 445 of Human beta II Tubulin (UniProt ID: P68371).
<b>Positive control</b>	A431; NIH 3T3; Jurkat; 293T and Raji cell lysates; A431 cells
<b>General notes</b>	<p>The Life Science industry has been in the grips of a reproducibility crisis for a number of years. Abcam is leading the way in addressing this with our range of recombinant monoclonal antibodies and knockout edited cell lines for gold-standard validation. Please check that this product meets your needs before purchasing.</p> <p>If you have any questions, special requirements or concerns, please send us an inquiry and/or contact our Support team ahead of purchase. Recommended alternatives for this product can be found below, along with publications, customer reviews and Q&amp;As</p>

Properties

<b>Form</b>	Liquid
<b>Storage instructions</b>	Shipped at 4°C. Store at +4°C short term (1-2 weeks). Upon delivery aliquot. Store at -20°C. Avoid freeze / thaw cycle.
<b>Storage buffer</b>	pH: 7.00 Preservative: 0.025% Proclin 300 Constituents: 79% PBS, 20% Glycerol (glycerin, glycerine)
<b>Purity</b>	Immunogen affinity purified
<b>Clonality</b>	Polyclonal
<b>Isotype</b>	IgG

## Applications

---

**The Abpromise guarantee** Our [Abpromise guarantee](#) covers the use of ab151318 in the following tested applications. The application notes include recommended starting dilutions; optimal dilutions/concentrations should be determined by the end user.

Application	Abreviews	Notes
IHC-P		1/100 - 1/1000.
WB		1/5000 - 1/20000. Predicted molecular weight: 50 kDa.
ICC/IF		1/100 - 1/1000.

## Target

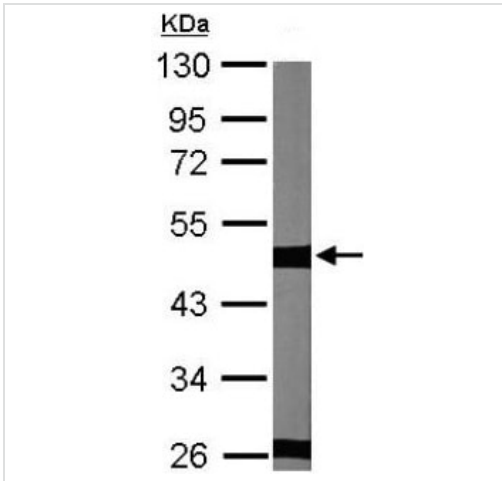
---

<b>Function</b>	Tubulin is the major constituent of microtubules. It binds two moles of GTP, one at an exchangeable site on the beta chain and one at a non-exchangeable site on the alpha chain.
<b>Tissue specificity</b>	Ubiquitous.
<b>Sequence similarities</b>	Belongs to the tubulin family.
<b>Domain</b>	The highly acidic C-terminal region may bind cations such as calcium.
<b>Post-translational modifications</b>	Some glutamate residues at the C-terminus are polyglutamylated. This modification occurs exclusively on glutamate residues and results in polyglutamate chains on the gamma-carboxyl group. Also monoglycylated but not polyglycylated due to the absence of functional TTLL10 in human. Monoglycylation is mainly limited to tubulin incorporated into axonemes (cilia and flagella) whereas glutamylation is prevalent in neuronal cells, centrioles, axonemes, and the mitotic spindle. Both modifications can coexist on the same protein on adjacent residues, and lowering glycylation levels increases polyglutamylated, and reciprocally. The precise function of such modifications is still unclear but they regulate the assembly and dynamics of axonemal microtubules.
<b>Cellular localization</b>	Cytoplasm > cytoskeleton.

---

## Images

---



Western blot - Anti-beta II Tubulin antibody (ab151318)

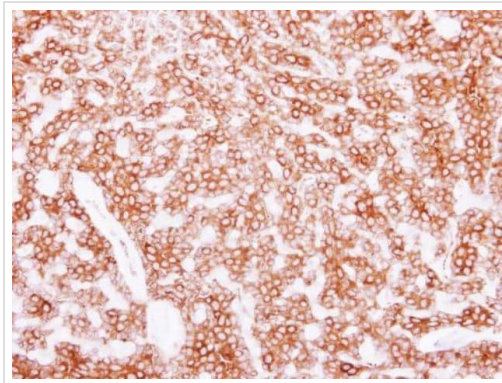
Anti-beta II Tubulin antibody (ab151318) at 1/10000 dilution + NIH/3T3 (mouse embryo fibroblast cell line) whole cell lysate at 30  $\mu$ g

**Secondary**

HRP-conjugated anti-rabbit IgG antibody

**Predicted band size:** 50 kDa

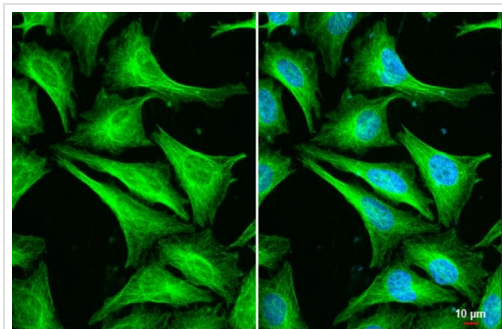
10% SDS PAGE



Immunohistochemistry (Formalin/PFA-fixed paraffin-embedded sections) - Anti-beta II Tubulin antibody (ab151318)

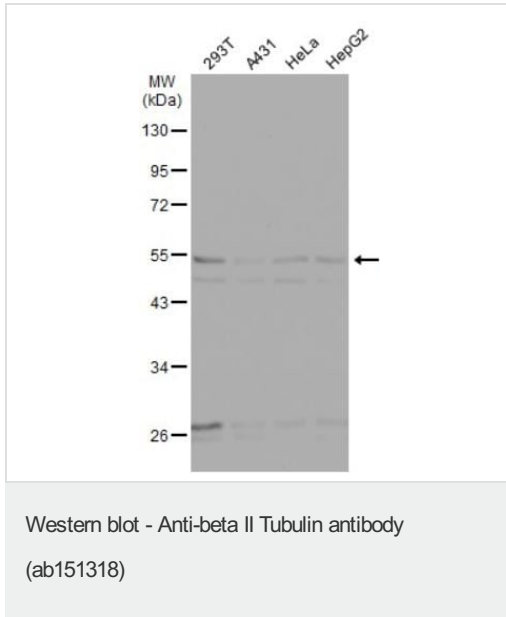
Paraffin-embedded human breast cancer tissue stained beta II tubulin using ab151318 at 1/250 dilution.

Antigen Retrieval: EDTA based buffer, pH 8.0, 15min.



Immunocytochemistry/ Immunofluorescence - Anti-beta II Tubulin antibody (ab151318)

Immunofluorescence analysis of 4% paraformaldehyde fixed (at RT for 15 min) HeLa (human epithelial cell line from cervix adenocarcinoma) cells labelling beta II tubulin at cytoskeleton (green) using ab151318 at 1/500 dilution. Blue: Fluoroshield with DAPI. Scale bar= 10  $\mu$ m.



**All lanes :** Anti-beta II Tubulin antibody (ab151318) at 1/10000 dilution

**Lane 1 :** HEK-293T (human epithelial cell line from embryonic kidney transformed with large T antigen) whole cell lysate

**Lane 2 :** A431 (human epidermoid carcinoma cell line) whole cell lysate

**Lane 3 :** HeLa (human epithelial cell line from cervix adenocarcinoma) whole cell lysate

**Lane 4 :** HepG2 (human liver hepatocellular carcinoma cell line) whole cell lysate

Lysates/proteins at 30 µg per lane.

#### Secondary

**All lanes :** HRP-conjugated anti-rabbit IgG antibody

**Predicted band size:** 50 kDa

10% SDS-PAGE

**Please note:** All products are "FOR RESEARCH USE ONLY. NOT FOR USE IN DIAGNOSTIC PROCEDURES"

#### Our Abpromise to you: Quality guaranteed and expert technical support

- Replacement or refund for products not performing as stated on the datasheet
- Valid for 12 months from date of delivery
- Response to your inquiry within 24 hours
- We provide support in Chinese, English, French, German, Japanese and Spanish
- Extensive multi-media technical resources to help you
- We investigate all quality concerns to ensure our products perform to the highest standards

If the product does not perform as described on this datasheet, we will offer a refund or replacement. For full details of the Abpromise, please visit <https://www.abcam.com/abpromise> or contact our technical team.

#### Terms and conditions

- Guarantee only valid for products bought direct from Abcam or one of our authorized distributors