

## Product datasheet

# Anti-Beta TRCP/HOS antibody [4C5D8] ab233638

6 Images

### Overview

<b>Product name</b>	Anti-Beta TRCP/HOS antibody [4C5D8]
<b>Description</b>	Mouse monoclonal [4C5D8] to Beta TRCP/HOS
<b>Host species</b>	Mouse
<b>Tested applications</b>	<b>Suitable for:</b> WB, IHC-P, Flow Cyt
<b>Species reactivity</b>	<b>Reacts with:</b> Human
<b>Immunogen</b>	Recombinant fragment corresponding to Human Beta TRCP/HOS aa 24-151. Database link: <a href="#">Q9Y297</a>
<b>Positive control</b>	WB: Beta TRCP/HOS (aa 24-151)-hlgGfc transfected HEK-293 cell lysate; Ramos, MCF7 and K562 cell lysates; Human beta TCRP (aa 24-151) recombinant protein. Flow Cyt: HeLa cells. IHC-P: Human esophageal cancer and rectum cancer tissues.
<b>General notes</b>	This product was previously labelled as Beta TRCP

Reproducibility is key to advancing scientific discovery and accelerating scientists' next breakthrough.

Abcam is leading the way with our range of recombinant antibodies, knockout-validated antibodies and knockout cell lines, all of which support improved reproducibility.

We are also planning to innovate the way in which we present recommended applications and species on our product datasheets, so that only applications & species that have been tested in our own labs, our suppliers or by selected trusted collaborators are covered by our Abpromise™ guarantee.

In preparation for this, we have started to update the applications & species that this product is Abpromise guaranteed for.

We are also updating the applications & species that this product has been "predicted to work with," however this information is not covered by our Abpromise guarantee.

Applications & species from publications and Abreviews that have not been tested in our own labs or in those of our suppliers are not covered by the Abpromise guarantee.

Please check that this product meets your needs before purchasing. If you have any questions, special requirements or concerns, please send us an inquiry and/or contact our Support team ahead of purchase. Recommended alternatives for this product can be found below, as well as customer reviews and Q&As.

## Properties

---

<b>Form</b>	Liquid
<b>Storage instructions</b>	Shipped at 4°C. Store at +4°C short term (1-2 weeks). Upon delivery aliquot. Store at -20°C long term. Avoid freeze / thaw cycle.
<b>Storage buffer</b>	Preservative: 0.05% Sodium azide Constituent: PBS
<b>Purity</b>	Protein G purified
<b>Purification notes</b>	Purified from tissue culture supernatant.
<b>Clonality</b>	Monoclonal
<b>Clone number</b>	4C5D8
<b>Isotype</b>	IgG1

## Applications

---

Our [Abpromise guarantee](#) covers the use of **ab233638** in the following tested applications.

The application notes include recommended starting dilutions; optimal dilutions/concentrations should be determined by the end user.

Application	Abreviews	Notes
WB		1/500 - 1/2000. Predicted molecular weight: 68 kDa.
IHC-P		1/200 - 1/1000.
Flow Cyt		1/200 - 1/400.

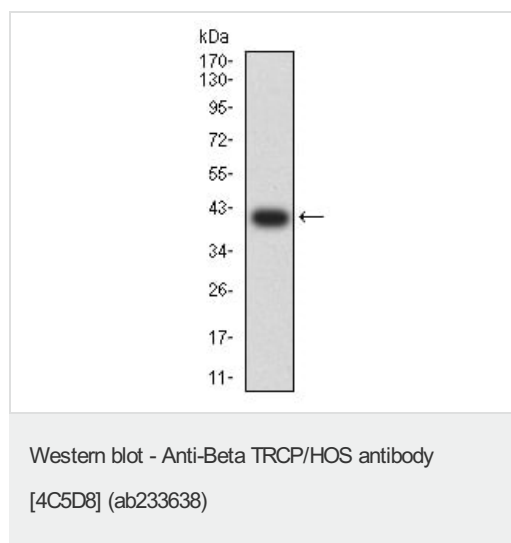
## Target

---

<b>Function</b>	Substrate recognition component of a SCF (SKP1-CUL1-F-box protein) E3 ubiquitin-protein ligase complex which mediates the ubiquitination and subsequent proteasomal degradation of target proteins. Recognizes and binds to phosphorylated target proteins. SCF(BTRC) mediates the ubiquitination of CTNNB1 and participates in Wnt signaling. SCF(BTRC) mediates the ubiquitination of NFKBIA, NFKBIB and NFKBIE; the degradation frees the associated NFKB1 to translocate into the nucleus and to activate transcription. Ubiquitination of NFKBIA occurs at 'Lys-21' and 'Lys-22'. SCF(BTRC) mediates the ubiquitination of phosphorylated NFKB1/nuclear factor NF-kappa-B p105 subunit, ATF4, SMAD3, SMAD4, CDC25A, DLG1, FBXO5 and probably NFKB2. SCF(BTRC) mediates the ubiquitination of phosphorylated SNAI1. May be involved in ubiquitination and subsequent proteasomal degradation through a DBB1-CUL4 E3 ubiquitin-protein ligase. Required for activation of NFKB-mediated transcription by IL1B, MAP3K14, MAP3K1, IKKB and TNF. Required for proteolytic processing of GLI3.
<b>Pathway</b>	Protein modification; protein ubiquitination.
<b>Sequence similarities</b>	Contains 1 F-box domain. Contains 7 WD repeats.
<b>Domain</b>	The N-terminal D domain mediates homodimerization.
<b>Cellular localization</b>	Cytoplasm. Nucleus.

---

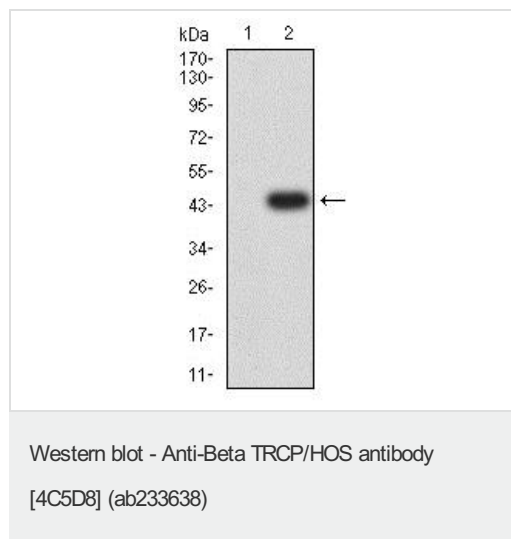
## Images



Anti-Beta TRCP/HOS antibody [4C5D8] (ab233638) at 1/500 dilution + Human Beta TRCP/HOS (aa 24-151) recombinant protein

**Predicted band size:** 68 kDa

Expected MW is 40.2 kDa.

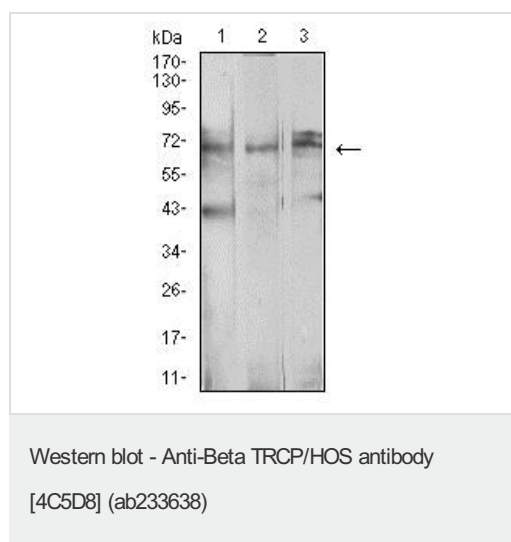


**All lanes :** Anti-Beta TRCP/HOS antibody [4C5D8] (ab233638) at 1/500 dilution

**Lane 1 :** HEK-293 (human epithelial cell line from embryonic kidney) cell lysate

**Lane 2 :** beta TRCP/HOS (aa 24-151)-hlgGfC transfected HEK-293 cell lysate

**Predicted band size:** 68 kDa



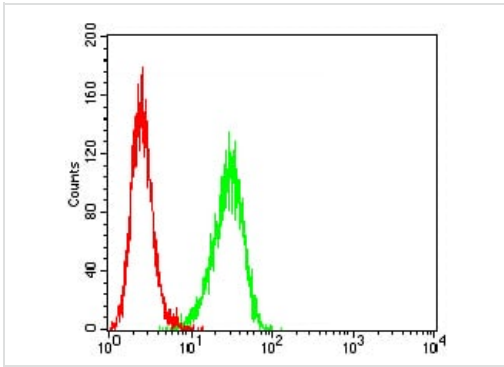
**All lanes :** Anti-Beta TRCP/HOS antibody [4C5D8] (ab233638) at 1/500 dilution

**Lane 1 :** Ramos (human Burkitt's lymphoma cell line) cell lysate

**Lane 2 :** NCF7 (human breast adenocarcinoma cell line) cell lysate

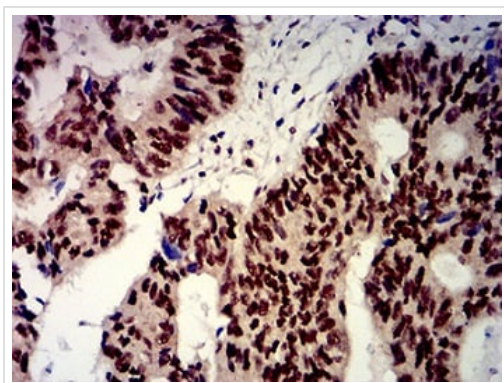
**Lane 3 :** K562 (human chronic myelogenous leukemia cell line from bone marrow) cell lysate

**Predicted band size:** 68 kDa



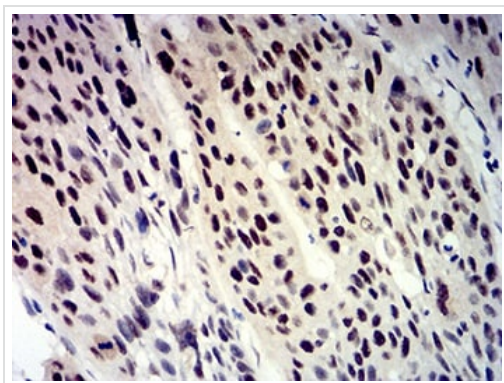
Flow Cytometry - Anti-Beta TRCP/HOS antibody [4C5D8] (ab233638)

Flow cytometric analysis of HeLa (human epithelial cell line from cervix adenocarcinoma) cell line labeling Beta TRCP/HOS with ab233638 at 1/200 dilution (green) compared with a negative control (red).



Immunohistochemistry (Formalin/PFA-fixed paraffin-embedded sections) - Anti-Beta TRCP/HOS antibody [4C5D8] (ab233638)

Paraffin-embedded human esophageal cancer tissue stained for Beta TRCP/HOS using ab233638 at 1/200 dilution in immunohistochemical analysis.



Immunohistochemistry (Formalin/PFA-fixed paraffin-embedded sections) - Anti-Beta TRCP/HOS antibody [4C5D8] (ab233638)

Paraffin-embedded human rectum cancer tissue stained for Beta TRCP/HOS using ab233638 at 1/200 dilution in immunohistochemical analysis.

**Please note:** All products are "FOR RESEARCH USE ONLY. NOT FOR USE IN DIAGNOSTIC PROCEDURES"

## **Our Abpromise to you: Quality guaranteed and expert technical support**

---

- Replacement or refund for products not performing as stated on the datasheet
- Valid for 12 months from date of delivery
- Response to your inquiry within 24 hours
  
- We provide support in Chinese, English, French, German, Japanese and Spanish
- Extensive multi-media technical resources to help you
- We investigate all quality concerns to ensure our products perform to the highest standards

If the product does not perform as described on this datasheet, we will offer a refund or replacement. For full details of the Abpromise, please visit <https://www.abcam.com/abpromise> or contact our technical team.

## **Terms and conditions**

---

- Guarantee only valid for products bought direct from Abcam or one of our authorized distributors