

Product datasheet

Anti-Beta TRCP/HOS antibody ab188511

1 Image

Overview

Product name	Anti-Beta TRCP/HOS antibody
Description	Rabbit polyclonal to Beta TRCP/HOS
Host species	Rabbit
Tested applications	Suitable for: WB, IHC-P
Species reactivity	Reacts with: Mouse, Rat, Human
Immunogen	Recombinant fragment corresponding to Human Beta TRCP/HOS aa 50-340. Sequence:

```
AFQNSSEREDCNNGEPPRKIIPEKNSLRQTYNSCARLC
LNQETVCLASTA
MKTENCVAKTKLANGTSSMIVPKQRKLSASYEKEKEL
CVKYFEQWSESDQ
VEFVEHLISQMCHYQHGHSYLPMLQRDFITALPARG
LDHIAENILSY
LDAKSLCAAELVCKEWYRVTS DGMLWKKLIERMVRT
DSLWRGLAERRGWG
QYLFKNKPPDGNAPPNSFYRALYPKIIQDIETIESNWRC
GRHSLQRIHCR
SETSKGVYCLQYDDQKIVSGLRDNTIKWDKNTLECKRI
LT
```

Database link: [Q9Y297](#)

 [Run BLAST with](#)

 [Run BLAST with](#)

Positive control Kidney cell line lysate

General notes This product was previously labelled as Beta TRCP

Properties

Form	Liquid
Storage instructions	Shipped at 4°C. Store at +4°C short term (1-2 weeks). Upon delivery aliquot. Store at -20°C long term. Avoid freeze / thaw cycle.
Storage buffer	pH: 7.3

	Preservative: 0.02% Sodium azide Constituents: 49% PBS, 50% Glycerol
Purity	Immunogen affinity purified
Clonality	Polyclonal
Isotype	IgG

Applications

Our [Abpromise guarantee](#) covers the use of **ab188511** in the following tested applications.

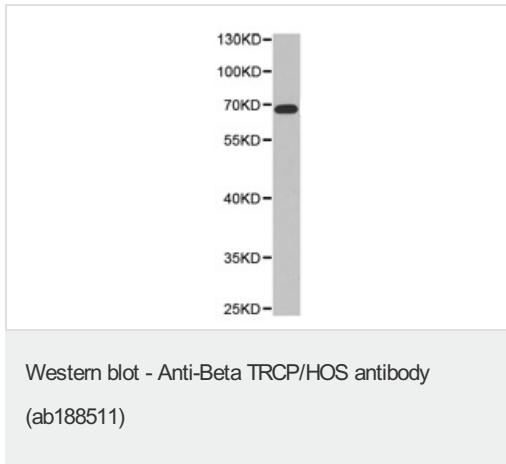
The application notes include recommended starting dilutions; optimal dilutions/concentrations should be determined by the end user.

Application	Abreviews	Notes
WB		1/500 - 1/2000. Predicted molecular weight: 69 kDa.
IHC-P		1/50 - 1/200. ab171870 - Rabbit polyclonal IgG, is suitable for use as an isotype control with this antibody.

Target

Function	Substrate recognition component of a SCF (SKP1-CUL1-F-box protein) E3 ubiquitin-protein ligase complex which mediates the ubiquitination and subsequent proteasomal degradation of target proteins. Recognizes and binds to phosphorylated target proteins. SCF(BTRC) mediates the ubiquitination of CTNNB1 and participates in Wnt signaling. SCF(BTRC) mediates the ubiquitination of NFKBIA, NFKBIB and NFKBIE; the degradation frees the associated NFKB1 to translocate into the nucleus and to activate transcription. Ubiquitination of NFKBIA occurs at 'Lys-21' and 'Lys-22'. SCF(BTRC) mediates the ubiquitination of phosphorylated NFKB1/nuclear factor NF-kappa-B p105 subunit, ATF4, SMAD3, SMAD4, CDC25A, DLG1, FBXO5 and probably NFKB2. SCF(BTRC) mediates the ubiquitination of phosphorylated SNAI1. May be involved in ubiquitination and subsequent proteasomal degradation through a DBB1-CUL4 E3 ubiquitin-protein ligase. Required for activation of NFKB-mediated transcription by IL1B, MAP3K14, MAP3K1, IKKBK and TNF. Required for proteolytic processing of GLI3.
Pathway	Protein modification; protein ubiquitination.
Sequence similarities	Contains 1 F-box domain. Contains 7 WD repeats.
Domain	The N-terminal D domain mediates homodimerization.
Cellular localization	Cytoplasm. Nucleus.

Images



Anti-Beta TRCP/HOS antibody (ab188511) at 1/500 dilution +
Kidney cell line lysate

Predicted band size: 69 kDa

Please note: All products are "FOR RESEARCH USE ONLY. NOT FOR USE IN DIAGNOSTIC PROCEDURES"

Our Abpromise to you: Quality guaranteed and expert technical support

- Replacement or refund for products not performing as stated on the datasheet
- Valid for 12 months from date of delivery
- Response to your inquiry within 24 hours
- We provide support in Chinese, English, French, German, Japanese and Spanish
- Extensive multi-media technical resources to help you
- We investigate all quality concerns to ensure our products perform to the highest standards

If the product does not perform as described on this datasheet, we will offer a refund or replacement. For full details of the Abpromise, please visit <https://www.abcam.com/abpromise> or contact our technical team.

Terms and conditions

- Guarantee only valid for products bought direct from Abcam or one of our authorized distributors