


Product datasheet

Anti-BICD1 antibody [EPR11642] ab170878

Recombinant **RabMAb**

[1 References](#) [4 Images](#)

Overview

Product name	Anti-BICD1 antibody [EPR11642]
Description	Rabbit monoclonal [EPR11642] to BICD1
Host species	Rabbit
Tested applications	Suitable for: WB, ICC/IF, IP Unsuitable for: Flow Cyt or IHC-P
Species reactivity	Reacts with: Human Predicted to work with: Mouse, Rat 
Immunogen	Recombinant fragment within Human BICD1. The exact sequence is proprietary. Database link: Q96G01
Positive control	Daudi, HeLa, Jurkat and 293T cell lysates, HeLa cells
General notes	This product is a recombinant monoclonal antibody, which offers several advantages including: <ul style="list-style-type: none"> - High batch-to-batch consistency and reproducibility - Improved sensitivity and specificity - Long-term security of supply - Animal-free production For more information see here . Our RabMAb [®] technology is a patented hybridoma-based technology for making rabbit monoclonal antibodies. For details on our patents, please refer to RabMAb[®] patents .

Properties

Form	Liquid
Storage instructions	Shipped at 4°C. Store at +4°C short term (1-2 weeks). Upon delivery aliquot. Store at -20°C long term. Avoid freeze / thaw cycle.
Storage buffer	pH: 7.2 Preservative: 0.01% Sodium azide Constituents: 9% PBS, 40% Glycerol (glycerin, glycerine), 0.05% BSA, 50% Tissue culture supernatant
Purity	Tissue culture supernatant
Clonality	Monoclonal

Clone number EPR11642

Isotype IgG

Applications

The Abpromise guarantee Our [Abpromise guarantee](#) covers the use of ab170878 in the following tested applications. The application notes include recommended starting dilutions; optimal dilutions/concentrations should be determined by the end user.

Application	Abreviews	Notes
WB		1/1000 - 1/5000. Predicted molecular weight: 110 kDa.
ICC/IF		1/50 - 1/100.
IP		1/10 - 1/100.

Application notes Is unsuitable for Flow Cyt or IHC-P.

Target

Function Regulates coat complex coatomer protein I (COPI)-independent Golgi-endoplasmic reticulum transport by recruiting the dynein-dynactin motor complex.

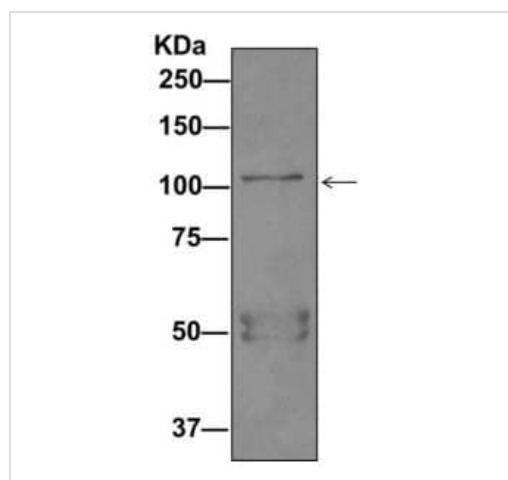
Tissue specificity Expressed in the brain, heart and skeletal muscle.

Sequence similarities Belongs to the BicD family.

Post-translational modifications Isoform 3 is phosphorylated on Ser-865 and Thr-866.

Cellular localization Golgi apparatus.

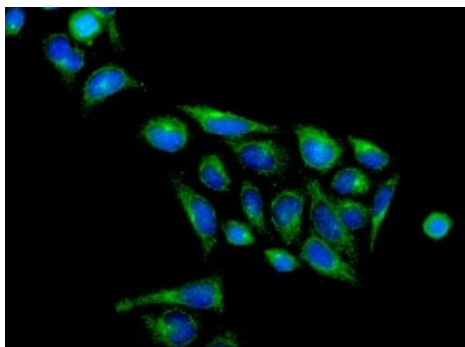
Images



Western blot analysis on immunoprecipitation pellet from 293T cell lysate labeling BICD1 using ab170878 at a 1/10 dilution.

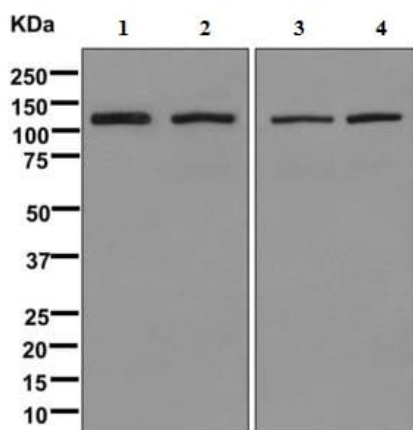
Anti-BICD1 antibody [EPR11642] (ab170878) at 1/10 dilution + pellet from 293T cell lysate

Immunoprecipitation - Anti-BICD1 antibody
[EPR11642] (ab170878)



Immunocytochemistry/ Immunofluorescence - Anti-BICD1 antibody [EPR11642] (ab170878)

Immunofluorescent staining of HeLa cells labeling BICD1 using ab170878 at a 1/50 dilution (green) and DAPI nuclear staining (blue).



Western blot - Anti-BICD1 antibody [EPR11642] (ab170878)

All lanes : Anti-BICD1 antibody [EPR11642] (ab170878) at 1/1000 dilution

Lane 1 : Daudi cell lysate

Lane 2 : HeLa cell lysate

Lane 3 : Jurkat cell lysate

Lane 4 : 293T cell lysate

Lysates/proteins at 10 µg per lane.

Secondary

All lanes : HRP labeled goat anti-rabbit IgG at 1/2000 dilution

Predicted band size: 110 kDa

Why choose a recombinant antibody?



Research with confidence
Consistent and reproducible results



Long-term and scalable supply
Recombinant technology



Success from the first experiment
Confirmed specificity



Ethical standards compliant
Animal-free production

Anti-BICD1 antibody [EPR11642] (ab170878)

Please note: All products are "FOR RESEARCH USE ONLY. NOT FOR USE IN DIAGNOSTIC PROCEDURES"

Our Abpromise to you: Quality guaranteed and expert technical support

- Replacement or refund for products not performing as stated on the datasheet
- Valid for 12 months from date of delivery
- Response to your inquiry within 24 hours

- We provide support in Chinese, English, French, German, Japanese and Spanish
- Extensive multi-media technical resources to help you
- We investigate all quality concerns to ensure our products perform to the highest standards

If the product does not perform as described on this datasheet, we will offer a refund or replacement. For full details of the Abpromise, please visit <https://www.abcam.com/abpromise> or contact our technical team.

Terms and conditions

- Guarantee only valid for products bought direct from Abcam or one of our authorized distributors