



Product datasheet

Anti-BICD2 antibody ab237616

3 Images

Overview

Product name	Anti-BICD2 antibody
Description	Rabbit polyclonal to BICD2
Host species	Rabbit
Tested applications	Suitable for: IHC-P, WB, ICC/IF
Species reactivity	Reacts with: Human
Immunogen	<p>Recombinant fragment corresponding to Human BICD2 aa 511-625. Sequence:</p> <p>DVAGETQGSLVAQDELVTFSEELANLYHHVCMCNNETP NRVMLDYREG QGGAGRTSPGGRTSPEARARRSPILLPKGLLAPEAGRAD GGTGDSSPSPG SSLPSPLSDPRREPM</p> <p>Database link: Q8TD16</p> <p style="text-align: right;">  Run BLAST with  Run BLAST with </p>
Positive control	WB: HeLa, K562, HL-60 and A549 whole cell lysate. IHC-P: Human cervical cancer tissue. ICC/IF: HeLa cells.
General notes	<p>Reproducibility is key to advancing scientific discovery and accelerating scientists' next breakthrough.</p> <p>Abcam is leading the way with our range of recombinant antibodies, knockout-validated antibodies and knockout cell lines, all of which support improved reproducibility.</p> <p>We are also planning to innovate the way in which we present recommended applications and species on our product datasheets, so that only applications & species that have been tested in our own labs, our suppliers or by selected trusted collaborators are covered by our Abpromise™ guarantee.</p> <p>In preparation for this, we have started to update the applications & species that this product is Abpromise guaranteed for.</p> <p>We are also updating the applications & species that this product has been “predicted to work with,” however this information is not covered by our Abpromise guarantee.</p> <p>Applications & species from publications and Abreviews that have not been tested in our own labs or in those of our suppliers are not covered by the Abpromise guarantee.</p> <p>Please check that this product meets your needs before purchasing. If you have any questions, special requirements or concerns, please send us an inquiry and/or contact our Support team</p>

ahead of purchase. Recommended alternatives for this product can be found below, as well as customer reviews and Q&As.

Properties

Form	Liquid
Storage instructions	Shipped at 4°C. Store at +4°C short term (1-2 weeks). Upon delivery aliquot. Store at -20°C long term. Avoid freeze / thaw cycle.
Storage buffer	pH: 7.40 Constituents: 50% Glycerol (glycerin, glycerine), PBS, 0.03% Proclin 300
Purity	Protein G purified
Purification notes	Purity greater than 95%.
Clonality	Polyclonal
Isotype	IgG

Applications

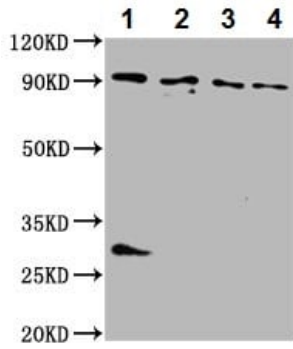
Our [Abpromise guarantee](#) covers the use of **ab237616** in the following tested applications.

The application notes include recommended starting dilutions; optimal dilutions/concentrations should be determined by the end user.

Application	Abreviews	Notes
IHC-P		1/500 - 1/1000.
WB		1/500 - 1/5000. Predicted molecular weight: 94 kDa.
ICC/IF		1/50 - 1/200.

Target

Function	May play a role in the dynein-dynactin interactions on the surface of membranous organelles, by associating with these complexes. Regulates coat complex coatomer protein I (COPI)-independent Golgi-endoplasmic reticulum transport by recruiting the dynein-dynactin motor complex.
Tissue specificity	Ubiquitous.
Sequence similarities	Belongs to the BicD family.
Domain	The fourth coiled coil region is involved in Golgi targeting and in the interaction with DCTN2.
Post-translational modifications	Phosphorylated by NEK9 in vitro.
Cellular localization	Golgi apparatus. Cytoplasm > cytoskeleton. In interphase cells mainly localizes to the Golgi complex and colocalizes with dynactin at microtubule plus ends (By similarity). Its localization is dependent on microtubule morphology.



Western blot - Anti-BICD2 antibody (ab237616)

All lanes : Anti-BICD2 antibody (ab237616) at 1/500 dilution

Lane 1 : HeLa (human epithelial cell line from cervix adenocarcinoma) whole cell lysate

Lane 2 : K562 (human chronic myelogenous leukemia cell line from bone marrow) whole cell lysate

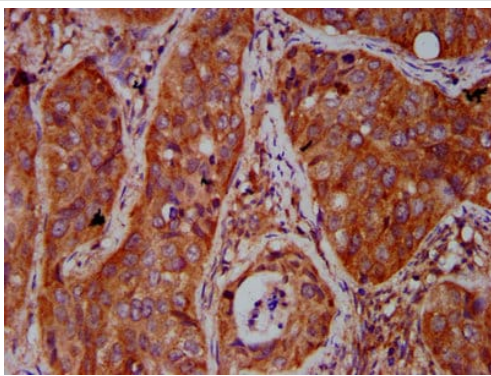
Lane 3 : HL-60 (human promyelocytic leukemia cell line) whole cell lysate

Lane 4 : A549 (human lung carcinoma cell line) whole cell lysate

Secondary

All lanes : Goat polyclonal to rabbit IgG at 1/50000 dilution

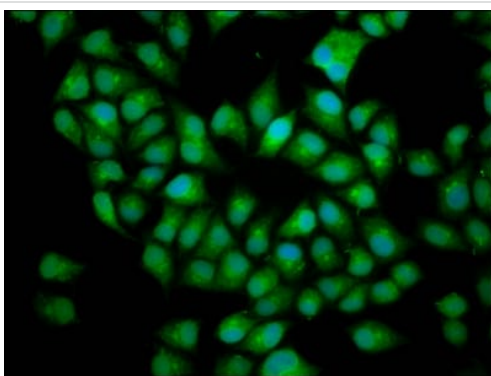
Predicted band size: 94 kDa



Immunohistochemistry (Formalin/PFA-fixed paraffin-embedded sections) - Anti-BICD2 antibody (ab237616)

Paraffin-embedded cervical cancer tissue stained for BICD2 using ab237616 at 1/500 dilution in immunohistochemical analysis.

After dewaxing and hydration, antigen retrieval was mediated by high pressure in a citrate buffer (pH 6.0). Section was blocked with 10% normal goat serum 30min at RT. Then primary antibody (1% BSA) was incubated at 4°C overnight. The primary is detected by a biotinylated secondary antibody and visualized using an HRP conjugated SP system.



Immunocytochemistry/ Immunofluorescence - Anti-BICD2 antibody (ab237616)

HeLa (human epithelial cell line from cervix adenocarcinoma) cells stained for BICD2 (green) using ab237616 at 1/166 dilution in ICC/IF, followed by Alexa Fluor 488-conjugated Goat Anti-Rabbit IgG (H+L) secondary antibody.

The cells were fixed in 4% formaldehyde, permeabilized using 0.2% Triton X-100 and blocked in 10% normal Goat Serum. The cells were then incubated with the antibody overnight at 4°C. The nuclear counter stain is DAPI.

Please note: All products are "FOR RESEARCH USE ONLY. NOT FOR USE IN DIAGNOSTIC PROCEDURES"

Our Abpromise to you: Quality guaranteed and expert technical support

- Replacement or refund for products not performing as stated on the datasheet
- Valid for 12 months from date of delivery
- Response to your inquiry within 24 hours

- We provide support in Chinese, English, French, German, Japanese and Spanish
- Extensive multi-media technical resources to help you
- We investigate all quality concerns to ensure our products perform to the highest standards

If the product does not perform as described on this datasheet, we will offer a refund or replacement. For full details of the Abpromise, please visit <https://www.abcam.com/abpromise> or contact our technical team.

Terms and conditions

- Guarantee only valid for products bought direct from Abcam or one of our authorized distributors