

Product datasheet

Anti-Biglycan antibody ab231297

9 Images

Overview

Product name	Anti-Biglycan antibody
Description	Rabbit polyclonal to Biglycan
Host species	Rabbit
Tested applications	Suitable for: IHC-P, WB
Species reactivity	Reacts with: Human, Pig Predicted to work with: Mouse, Rat, Sheep, Horse, Cow, Dog
Immunogen	<p>Recombinant fragment (His-tag) corresponding to Human Biglycan aa 230-366. Expressed in E.coli. N-terminal tag.</p> <p>Sequence:</p> <p>TLNELHLDHNKIQAELEDLLRYSKLYRLGLGHNQIRMIENG SLSFLPTL RELHLDNNKLARVPSGLPDLKLLQVVYLHSNNITKVGVND FCPMGFGVKR AYYNGISLFNNPVPYWEVQPATFRCVTDRLAIQFGNY</p> <p>Database link: P21810</p> <p style="text-align: right;"> Run BLAST with Run BLAST with </p>
Positive control	IHC-P: Human breast cancer, liver, prostate, cerebrum and kidney tissues. WB: Pig kidney and spleen lysates; Recombinant human Biglycan protein.
General notes	<p>Reproducibility is key to advancing scientific discovery and accelerating scientists' next breakthrough.</p> <p>Abcam is leading the way with our range of recombinant antibodies, knockout-validated antibodies and knockout cell lines, all of which support improved reproducibility.</p> <p>We are also planning to innovate the way in which we present recommended applications and species on our product datasheets, so that only applications & species that have been tested in our own labs, our suppliers or by selected trusted collaborators are covered by our Abpromise™ guarantee.</p> <p>In preparation for this, we have started to update the applications & species that this product is Abpromise guaranteed for.</p> <p>We are also updating the applications & species that this product has been “predicted to work with,” however this information is not covered by our Abpromise guarantee.</p> <p>Applications & species from publications and Abreviews that have not been tested in our own</p>

labs or in those of our suppliers are not covered by the Abpromise guarantee.

Please check that this product meets your needs before purchasing. If you have any questions, special requirements or concerns, please send us an inquiry and/or contact our Support team ahead of purchase. Recommended alternatives for this product can be found below, as well as customer reviews and Q&As.

Properties

Form	Liquid
Storage instructions	Shipped at 4°C. Store at +4°C short term (1-2 weeks). Upon delivery aliquot. Store at -20°C long term. Avoid freeze / thaw cycle.
Storage buffer	pH: 7.40 Preservative: 0.02% Sodium azide Constituents: PBS, 50% Glycerol
Purity	Immunogen affinity purified
Purification notes	ab231297 was purified by antigen-specific affinity chromatography followed by Protein A affinity chromatography.
Clonality	Polyclonal
Isotype	IgG

Applications

Our [Abpromise guarantee](#) covers the use of **ab231297** in the following tested applications.

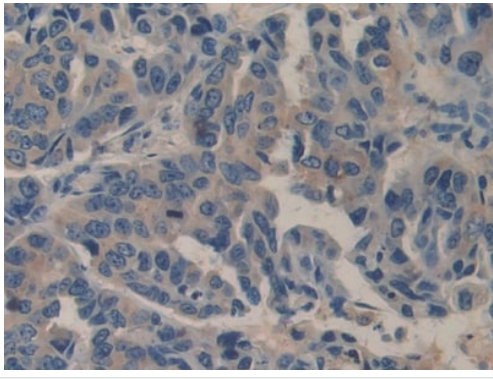
The application notes include recommended starting dilutions; optimal dilutions/concentrations should be determined by the end user.

Application	Abreviews	Notes
IHC-P		Use a concentration of 5 - 20 µg/ml.
WB		Use a concentration of 0.2 - 2 µg/ml. Predicted molecular weight: 42 kDa.

Target

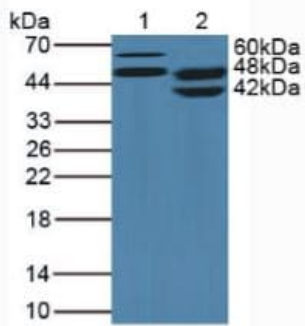
Function	May be involved in collagen fiber assembly.
Tissue specificity	Found in several connective tissues, especially in articular cartilages.
Sequence similarities	Belongs to the small leucine-rich proteoglycan (SLRP) family. SLRP class I subfamily. Contains 12 LRR (leucine-rich) repeats.
Post-translational modifications	The two attached glycosaminoglycan chains can be either chondroitin sulfate or dermatan sulfate.
Cellular localization	Secreted > extracellular space > extracellular matrix.

Images



Immunohistochemistry (Formalin/PFA-fixed paraffin-embedded sections) - Anti-Biglycan antibody (ab231297)

Paraffin-embedded human breast cancer tissue stained for Biglycan using ab231297 at 20 µg/ml in immunohistochemical analysis. DAB staining.



Western blot - Anti-Biglycan antibody (ab231297)

All lanes : Anti-Biglycan antibody (ab231297) at 5 µg/ml

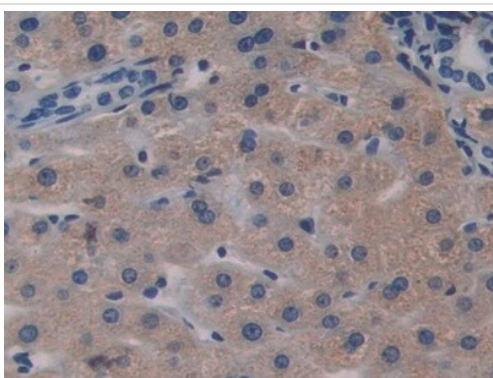
Lane 1 : Pig spleen lysate

Lane 2 : Pig kidney lysate

Secondary

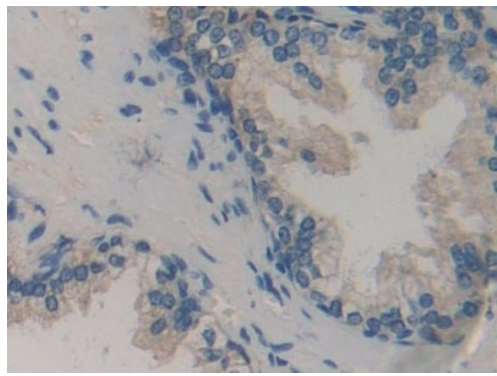
All lanes : HRP-Linked Guinea pig Anti-Rabbit antibody at 1/1000 dilution

Predicted band size: 42 kDa



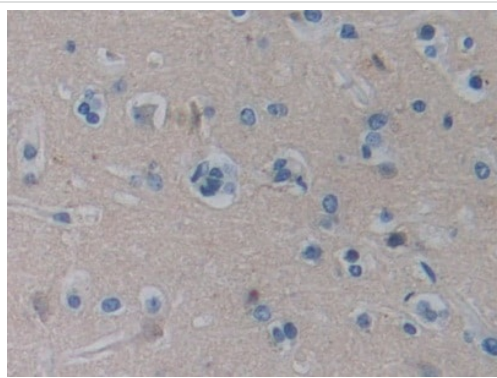
Immunohistochemistry (Formalin/PFA-fixed paraffin-embedded sections) - Anti-Biglycan antibody (ab231297)

Formalin-fixed, paraffin-embedded human liver tissue stained for Biglycan using ab231297 at 20 µg/ml in immunohistochemical analysis. DAB staining.



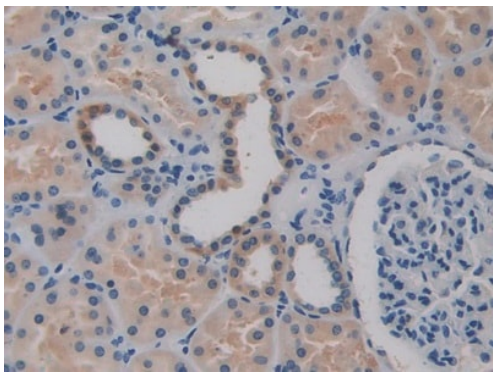
Immunohistochemistry (Formalin/PFA-fixed paraffin-embedded sections) - Anti-Biglycan antibody (ab231297)

Paraffin-embedded human prostate tissue stained for Biglycan using ab231297 at 20 $\mu\text{g/ml}$ in immunohistochemical analysis. DAB staining.



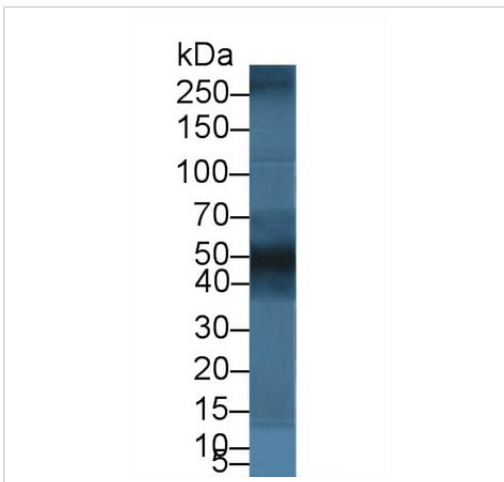
Immunohistochemistry (Formalin/PFA-fixed paraffin-embedded sections) - Anti-Biglycan antibody (ab231297)

Paraffin-embedded human cerebrum tissue stained for Biglycan using ab231297 at 20 $\mu\text{g/ml}$ in immunohistochemical analysis. DAB staining.



Immunohistochemistry (Formalin/PFA-fixed paraffin-embedded sections) - Anti-Biglycan antibody (ab231297)

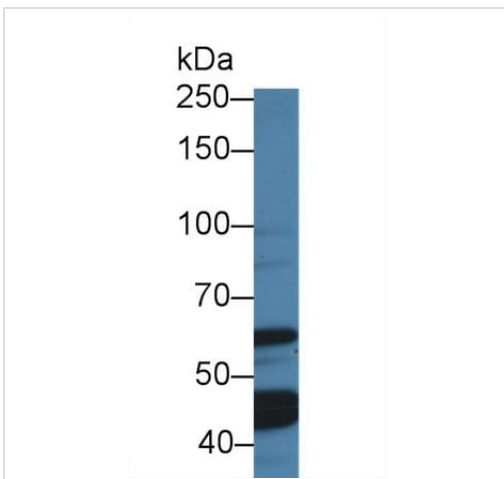
Paraffin-embedded human kidney tissue stained for Biglycan using ab231297 at 20 $\mu\text{g/ml}$ in immunohistochemical analysis. DAB staining.



Western blot - Anti-Biglycan antibody (ab231297)

Anti-Biglycan antibody (ab231297) at 2 $\mu\text{g/ml}$ + Pig kidney lysate

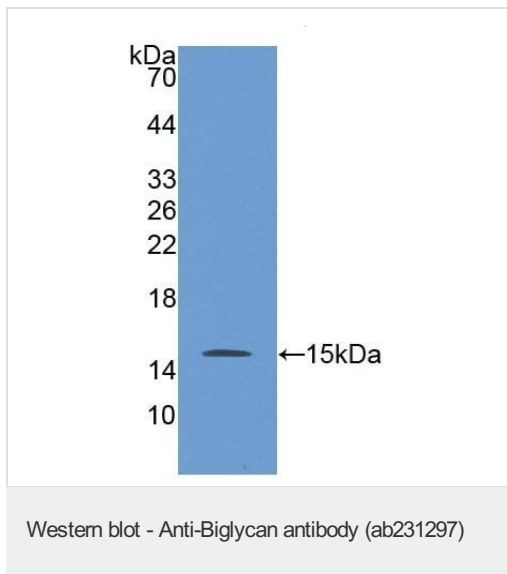
Predicted band size: 42 kDa



Western blot - Anti-Biglycan antibody (ab231297)

Anti-Biglycan antibody (ab231297) at 2 $\mu\text{g/ml}$ + Pig spleen lysate

Predicted band size: 42 kDa



Anti-Biglycan antibody (ab231297) at 2 µg/ml + Recombinant human Biglycan protein

Predicted band size: 42 kDa

Please note: All products are "FOR RESEARCH USE ONLY. NOT FOR USE IN DIAGNOSTIC PROCEDURES"

Our Abpromise to you: Quality guaranteed and expert technical support

- Replacement or refund for products not performing as stated on the datasheet
- Valid for 12 months from date of delivery
- Response to your inquiry within 24 hours
- We provide support in Chinese, English, French, German, Japanese and Spanish
- Extensive multi-media technical resources to help you
- We investigate all quality concerns to ensure our products perform to the highest standards

If the product does not perform as described on this datasheet, we will offer a refund or replacement. For full details of the Abpromise, please visit <https://www.abcam.com/abpromise> or contact our technical team.

Terms and conditions

- Guarantee only valid for products bought direct from Abcam or one of our authorized distributors