

Product datasheet

Anti-Bim antibody ab7888

19 References 5 Images

Overview

---

<b>Product name</b>	Anti-Bim antibody
<b>Description</b>	Rabbit polyclonal to Bim
<b>Host species</b>	Rabbit
<b>Tested applications</b>	<b>Suitable for:</b> IHC-P, WB, ICC/IF
<b>Species reactivity</b>	<b>Reacts with:</b> Rat, Human
<b>Immunogen</b>	Peptide corresponding to amino acids 22 to 40 of human origin. The sequence is identical to that of mouse and differs from that of rat by one amino acid.
<b>Positive control</b>	WB: Human colon and thymus tissue lysates, Rat Myeloma Cell lysate ICC/IF: K562 cells
<b>General notes</b>	<p>The Life Science industry has been in the grips of a reproducibility crisis for a number of years. Abcam is leading the way in addressing this with our range of recombinant monoclonal antibodies and knockout edited cell lines for gold-standard validation. Please check that this product meets your needs before purchasing.</p> <p>If you have any questions, special requirements or concerns, please send us an inquiry and/or contact our Support team ahead of purchase. Recommended alternatives for this product can be found below, along with publications, customer reviews and Q&amp;As</p>

Properties

---

<b>Form</b>	Liquid
<b>Storage instructions</b>	Shipped at 4°C. Upon delivery aliquot and store at -20°C or -80°C. Avoid repeated freeze / thaw cycles.
<b>Storage buffer</b>	pH: 7.2 Preservative: 0.02% Sodium azide
<b>Purity</b>	Affinity purified
<b>Clonality</b>	Polyclonal
<b>Isotype</b>	IgG

Applications

---

**The Abpromise guarantee** Our [Abpromise guarantee](#) covers the use of ab7888 in the following tested applications.

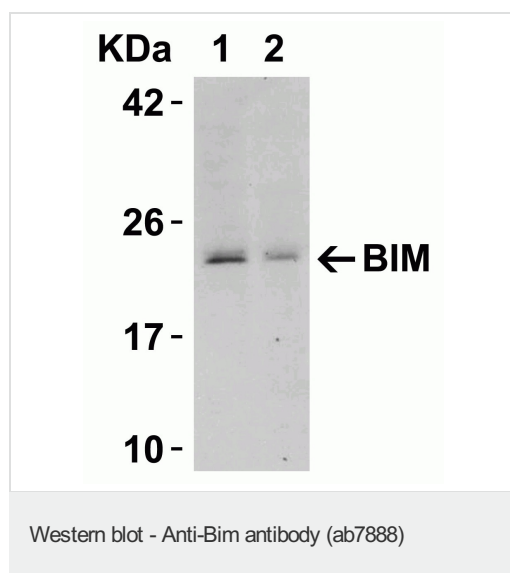
The application notes include recommended starting dilutions; optimal dilutions/concentrations should be determined by the end user.

Application	Abreviews	Notes
IHC-P		Use a concentration of 20 µg/ml.
WB		Use a concentration of 1 µg/ml. Predicted molecular weight: 23 kDa.
ICC/IF		Use at an assay dependent concentration.

## Target

<b>Function</b>	Induces apoptosis. Isoform BimL is more potent than isoform BimEL. Isoform Bim-alpha1, isoform Bim-alpha2 and isoform Bim-alpha3 induce apoptosis, although less potent than the isoforms BimEL, BimL and BimS. Isoform Bim-gamma induces apoptosis.
<b>Tissue specificity</b>	Isoform BimEL, isoform BimL and isoform BimS are the predominant isoforms and are ubiquitously expressed with a tissue-specific variation. Isoform Bim-gamma is most abundantly expressed in small intestine and colon, and in lower levels in spleen, prostate, testis, heart, liver and kidney.
<b>Sequence similarities</b>	Belongs to the Bcl-2 family.
<b>Domain</b>	The BH3 motif is required for Bcl-2 binding and cytotoxicity.
<b>Cellular localization</b>	Mitochondrion and Endomembrane system. Associated with intracytoplasmic membranes.

## Images



**All lanes :** Anti-Bim antibody (ab7888) at 0.5 µg/ml

**Lane 1 :** Human thymus tissue lysate

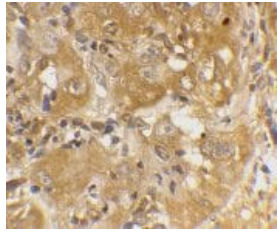
**Lane 2 :** Human colon tissue lysate

Lysates/proteins at 15 µg per lane.

**Secondary**

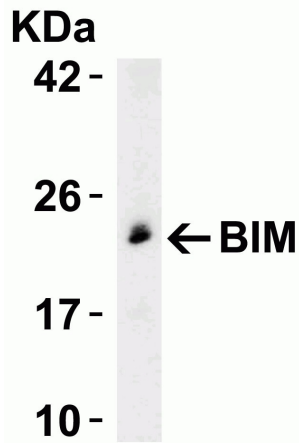
**All lanes :** Goat anti-rabbit IgG HRP conjugate at 1/10000 dilution

**Predicted band size:** 23 kDa



Immunohistochemistry (Formalin/PFA-fixed paraffin-embedded sections) - Anti-Bim antibody (ab7888)

ab7888 at 20µg/ml staining Bim in human cancer cells by IHC-P



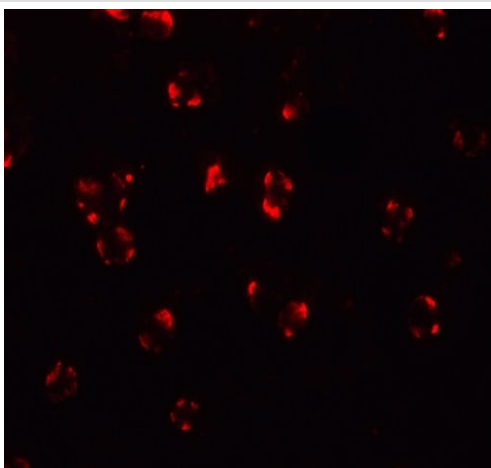
Western blot - Anti-Bim antibody (ab7888)

Anti-Bim antibody (ab7888) at 0.5 µg/ml + Rat Myeloma Cell lysate at 15 µg

**Secondary**

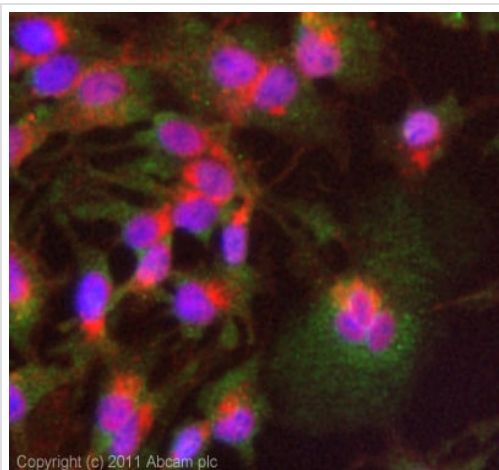
Goat anti-rabbit IgG HRP conjugate at 1/10000 dilution

**Predicted band size:** 23 kDa



Immunocytochemistry/ Immunofluorescence - Anti-Bim antibody (ab7888)

Immunocytochemistry/ Immunofluorescence analysis of 4% paraformaldehyde fixed human K562 cells labeling Bim with ab7888 at 20 µg/mL. Goat anti-rabbit IgG secondary antibody at 1/500 dilution was used as the secondary antibody.



Immunocytochemistry/ Immunofluorescence - Anti-Bim antibody (ab7888)

ICC/IF image of ab7888 stained HepG2 cells. The cells were 4% formaldehyde (10 min) and then incubated in 1%BSA / 10% normal goat serum / 0.3M glycine in 0.1% PBS-Tween for 1h to permeabilise the cells and block non-specific protein-protein interactions. The cells were then incubated with the antibody (ab7888, 5µg/ml) overnight at +4°C. The secondary antibody (green) was ab96899 Dylight 488 goat anti-rabbit IgG (H+L) used at a 1/250 dilution for 1h. Alexa Fluor® 594 WGA was used to label plasma membranes (red) at a 1/200 dilution for 1h. DAPI was used to stain the cell nuclei (blue) at a concentration of 1.43µM.

**Please note:** All products are "FOR RESEARCH USE ONLY. NOT FOR USE IN DIAGNOSTIC PROCEDURES"

### Our Abpromise to you: Quality guaranteed and expert technical support

---

- Replacement or refund for products not performing as stated on the datasheet
- Valid for 12 months from date of delivery
- Response to your inquiry within 24 hours
- We provide support in Chinese, English, French, German, Japanese and Spanish
- Extensive multi-media technical resources to help you
- We investigate all quality concerns to ensure our products perform to the highest standards

If the product does not perform as described on this datasheet, we will offer a refund or replacement. For full details of the Abpromise, please visit <https://www.abcam.com/abpromise> or contact our technical team.

### Terms and conditions

---

- Guarantee only valid for products bought direct from Abcam or one of our authorized distributors