

Product datasheet

Biotin Anti-CD19 antibody [4G7] ab269358

1 Image

Overview

Product name	Biotin Anti-CD19 antibody [4G7]
Description	Biotin Mouse monoclonal [4G7] to CD19
Host species	Mouse
Conjugation	Biotin

Tested Applications & Species

Application	Species
Flow Cyt	Human

See all applications and species data

Immunogen Tissue, cells or virus corresponding to CD19. Human CCL (chronic lymphocytic leukemia) cells
Database link: [P15391](#)

Positive control Flow: Human peripheral blood leukocytes.

Properties




Form	Liquid
Storage instructions	Shipped at 4°C. Store at +4°C short term (1-2 weeks). Upon delivery aliquot. Store at -20°C long term. Store In the Dark.
Storage buffer	pH: 7.4 Preservative: 0.1% Sodium azide Constituent: PBS
Purity	Size exclusion
Clonality	Monoclonal
Clone number	4G7
Isotype	IgG1
Light chain type	kappa


Applications

The Abpromise guarantee

Our [Abpromise guarantee](#) covers the use of **ab269358** in the following tested applications.

The application notes include recommended starting dilutions; optimal dilutions/concentrations should be determined by the end user.

 Guaranteed Tested applications are guaranteed to work and covered by our Abpromise guarantee.	 Predicted Predicted to work for this combination of applications and species but not guaranteed.	 Incompatible Does not work for this combination of applications and species.
--	--	--

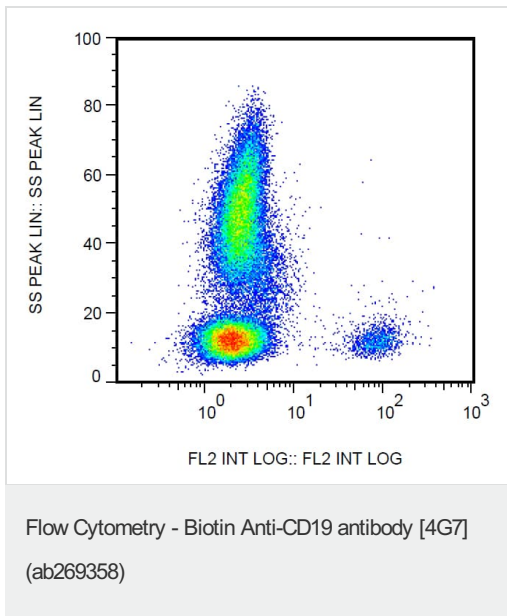
Application	Species
Flow Cyt	 Human

Application	Abreviews	Notes
Flow Cyt		Use 10µl for 10 ⁶ cells.

Target

Function	Assembles with the antigen receptor of B lymphocytes in order to decrease the threshold for antigen receptor-dependent stimulation.
Involvement in disease	Defects in CD19 are the cause of immunodeficiency common variable type 3 (CVID3) [MIM:613493]; also called antibody deficiency due to CD19 defect. CVID3 is a primary immunodeficiency characterized by antibody deficiency, hypogammaglobulinemia, recurrent bacterial infections and an inability to mount an antibody response to antigen. The defect results from a failure of B-cell differentiation and impaired secretion of immunoglobulins; the numbers of circulating B cells is usually in the normal range, but can be low.
Sequence similarities	Contains 2 Ig-like C2-type (immunoglobulin-like) domains.
Post-translational modifications	Phosphorylated on serine and threonine upon DNA damage, probably by ATM or ATR. Phosphorylated on tyrosine following B-cell activation.
Cellular localization	Membrane.

Images



Flow cytometry analysis (surface staining) of human peripheral blood leukocytes labeling CD19 with ab269358.

Please note: All products are "FOR RESEARCH USE ONLY. NOT FOR USE IN DIAGNOSTIC PROCEDURES"

Our Abpromise to you: Quality guaranteed and expert technical support

- Replacement or refund for products not performing as stated on the datasheet
- Valid for 12 months from date of delivery
- Response to your inquiry within 24 hours
- We provide support in Chinese, English, French, German, Japanese and Spanish
- Extensive multi-media technical resources to help you
- We investigate all quality concerns to ensure our products perform to the highest standards

If the product does not perform as described on this datasheet, we will offer a refund or replacement. For full details of the Abpromise, please visit <https://www.abcam.com/abpromise> or contact our technical team.

Terms and conditions

- Guarantee only valid for products bought direct from Abcam or one of our authorized distributors