


Product datasheet

Biotin Anti-CD48 antibody [MEM-102] ab28111

1 References 1 Image

Overview

<b>Product name</b>	Biotin Anti-CD48 antibody [MEM-102]
<b>Description</b>	Biotin Mouse monoclonal [MEM-102] to CD48
<b>Host species</b>	Mouse
<b>Conjugation</b>	Biotin
<b>Tested applications</b>	<b>Suitable for:</b> Flow Cyt
<b>Species reactivity</b>	<b>Reacts with:</b> Human <b>Predicted to work with:</b> Non human primates 
<b>Immunogen</b>	Tissue, cells or virus corresponding to Human CD48. Burkitt's lymphoma cell line Raji
<b>General notes</b>	<p>The antibody is conjugated with with Biotin-LC-NHS and it is free of unconjugated biotin.</p> <p>The Life Science industry has been in the grips of a reproducibility crisis for a number of years. Abcam is leading the way in addressing this with our range of recombinant monoclonal antibodies and knockout edited cell lines for gold-standard validation. Please check that this product meets your needs before purchasing.</p> <p>If you have any questions, special requirements or concerns, please send us an inquiry and/or contact our Support team ahead of purchase. Recommended alternatives for this product can be found below, along with publications, customer reviews and Q&amp;As</p>

Properties

<b>Form</b>	Liquid
<b>Storage instructions</b>	Shipped at 4°C. Store at +4°C short term (1-2 weeks). Store at -20°C or -80°C. Avoid freeze / thaw cycle.
<b>Storage buffer</b>	pH: 7.40 Preservative: 0.097% Sodium azide Constituent: PBS
<b>Purity</b>	Protein A purified
<b>Clonality</b>	Monoclonal
<b>Clone number</b>	MEM-102
<b>Isotype</b>	IgG1

## Applications

### The Abpromise guarantee

Our [Abpromise guarantee](#) covers the use of ab28111 in the following tested applications.

The application notes include recommended starting dilutions; optimal dilutions/concentrations should be determined by the end user.

Application	Abreviews	Notes
Flow Cyt		Use a concentration of 1 - 2 µg/ml.

## Target

### Function

Ligand for CD2. Might facilitate interaction between activated lymphocytes. Probably involved in regulating T-cell activation.

### Sequence similarities

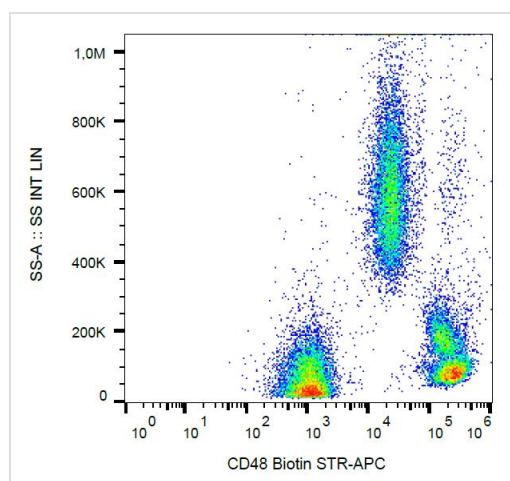
Contains 1 Ig-like C2-type (immunoglobulin-like) domain.

Contains 1 Ig-like V-type (immunoglobulin-like) domain.

### Cellular localization

Cell membrane.

## Images



Flow cytometry analysis (surface staining) of human peripheral blood with ab28111

Flow Cytometry - Biotin Anti-CD48 antibody [MEM-102] (ab28111)

**Please note:** All products are "FOR RESEARCH USE ONLY. NOT FOR USE IN DIAGNOSTIC PROCEDURES"

## Our Abpromise to you: Quality guaranteed and expert technical support

- Replacement or refund for products not performing as stated on the datasheet
- Valid for 12 months from date of delivery
- Response to your inquiry within 24 hours
- We provide support in Chinese, English, French, German, Japanese and Spanish

- Extensive multi-media technical resources to help you
- We investigate all quality concerns to ensure our products perform to the highest standards

If the product does not perform as described on this datasheet, we will offer a refund or replacement. For full details of the Abpromise, please visit <https://www.abcam.com/abpromise> or contact our technical team.

### **Terms and conditions**

---

- Guarantee only valid for products bought direct from Abcam or one of our authorized distributors